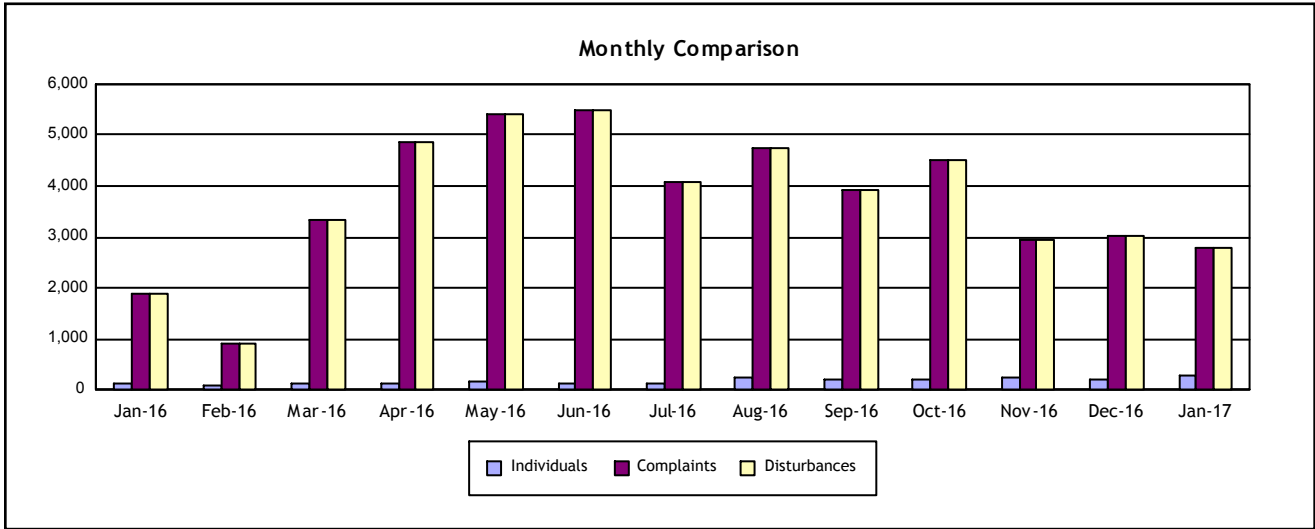


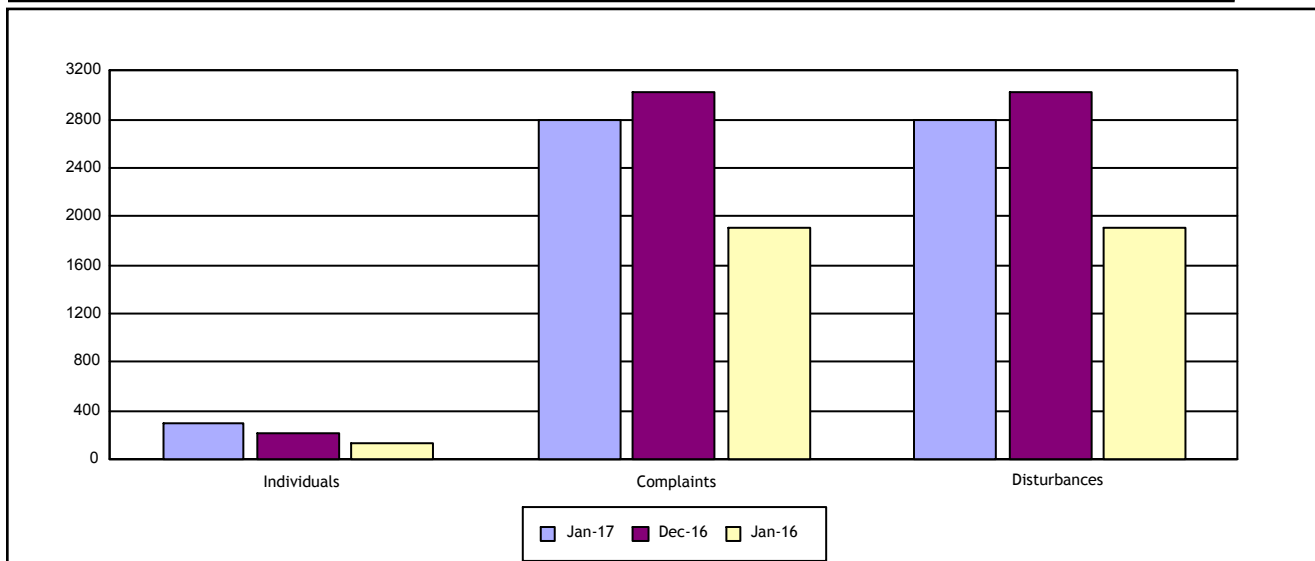
**Individuals Submitting Noise Complaints** **298**

**Noise Complaints Received** **2,787**

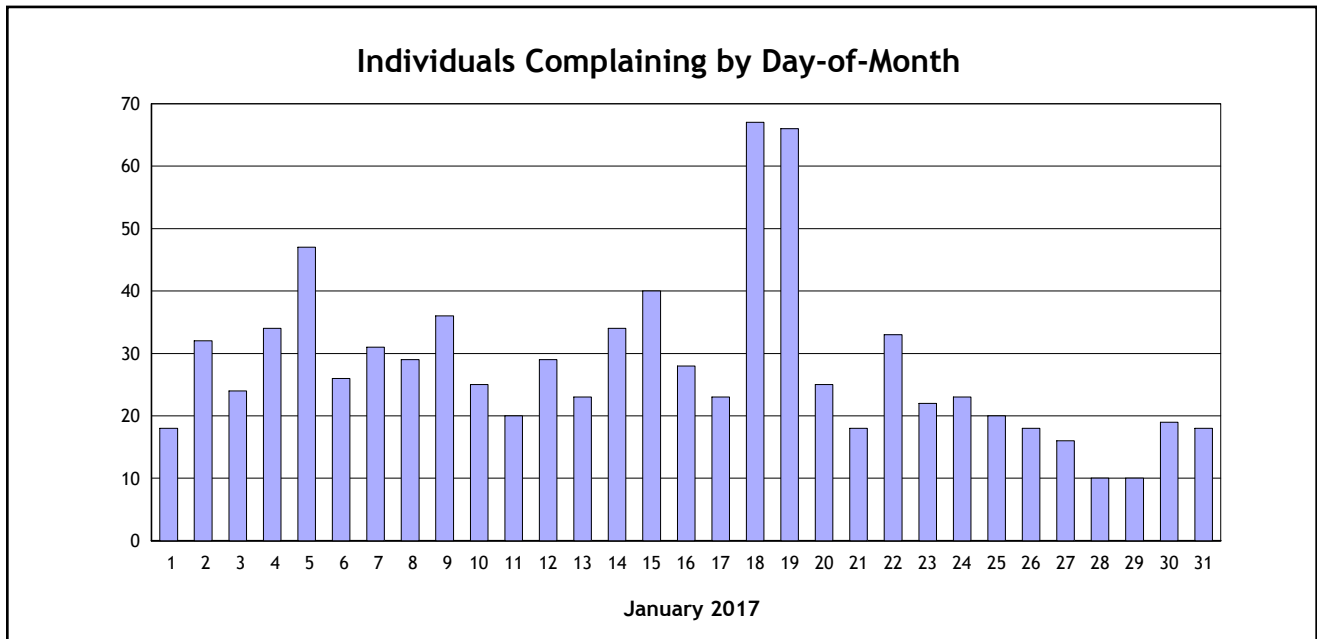
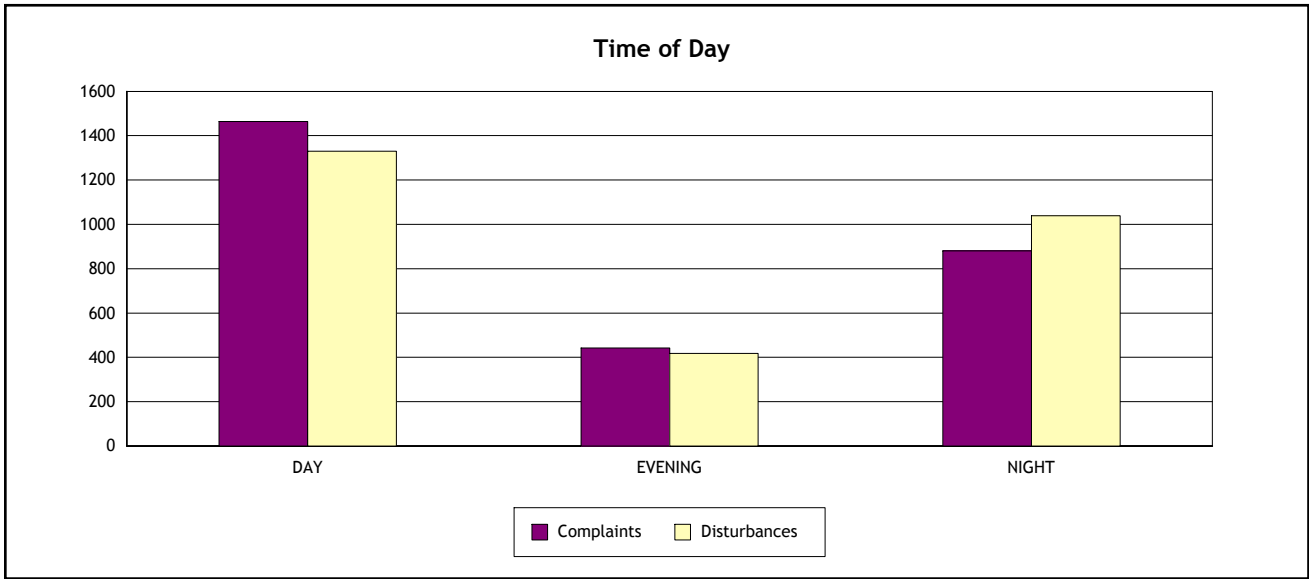
**Noise Disturbances Reported** **2,787**



	January 2017	December 2016	% Change	January 2016	% Change
<b>Individuals</b>	298	219	36%	132	126%
<b>Complaints</b>	2,787	3,024	-8%	1,907	46%
<b>Disturbances</b>	2,787	3,024	-8%	1,907	46%



	Day ( 7:00 am - 7:00 pm)	Evening (7:00 pm - 10:00 pm)	Night (10:00 pm - 7:00 am)
Complaints	1,464	443	880
Disturbances	1,330	418	1,039



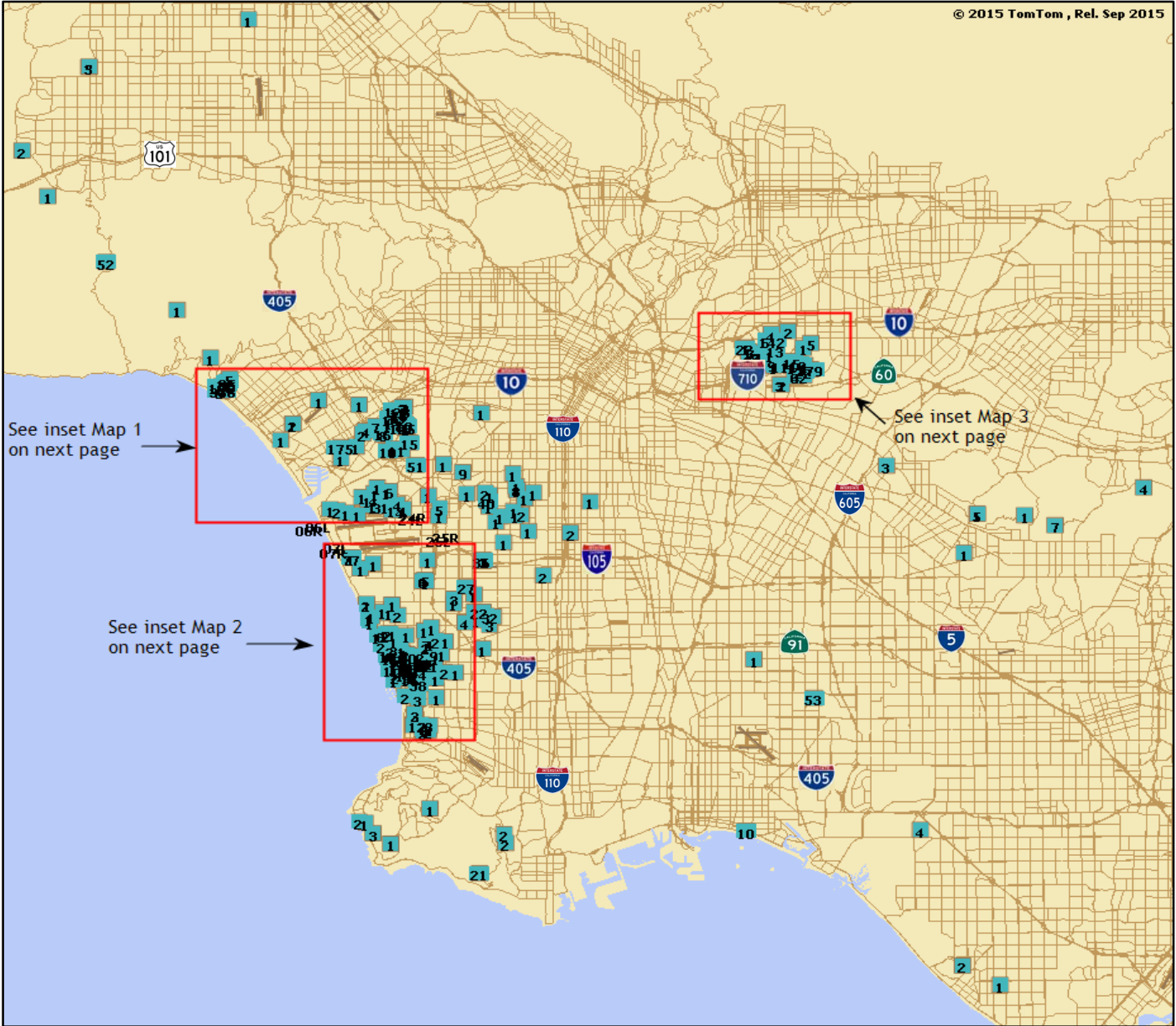


Aircraft Noise Community Response Report  
 Complaint Distribution by City and Complainant

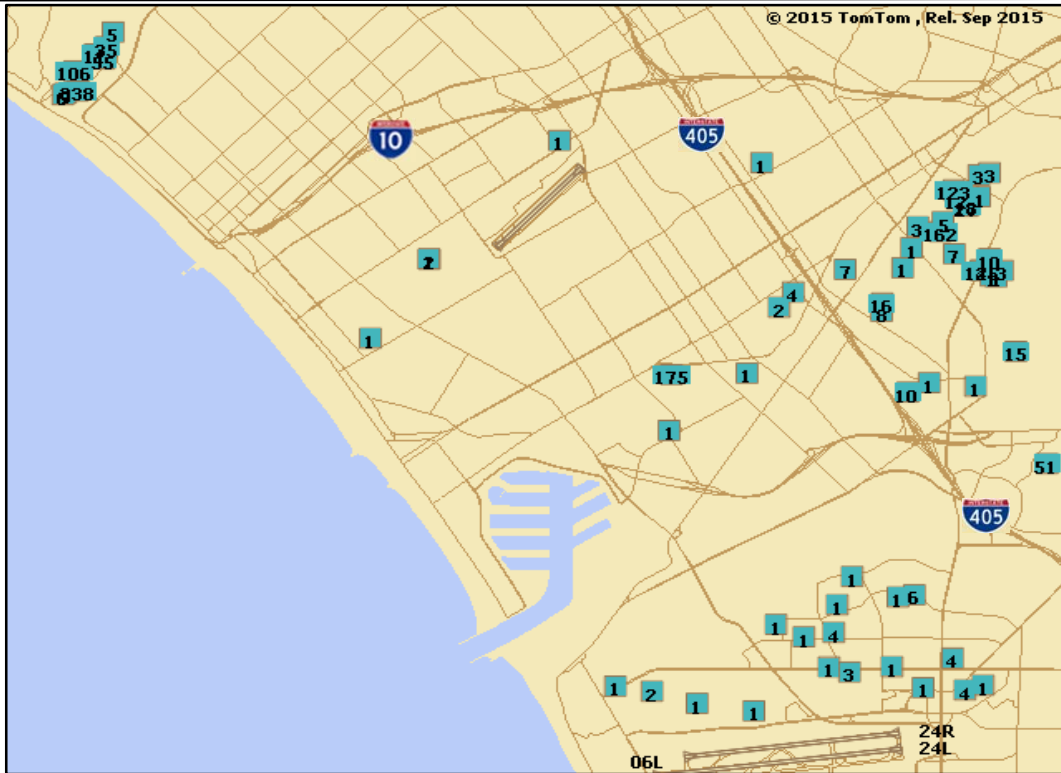
Los Angeles International Airport

Period: January 2017

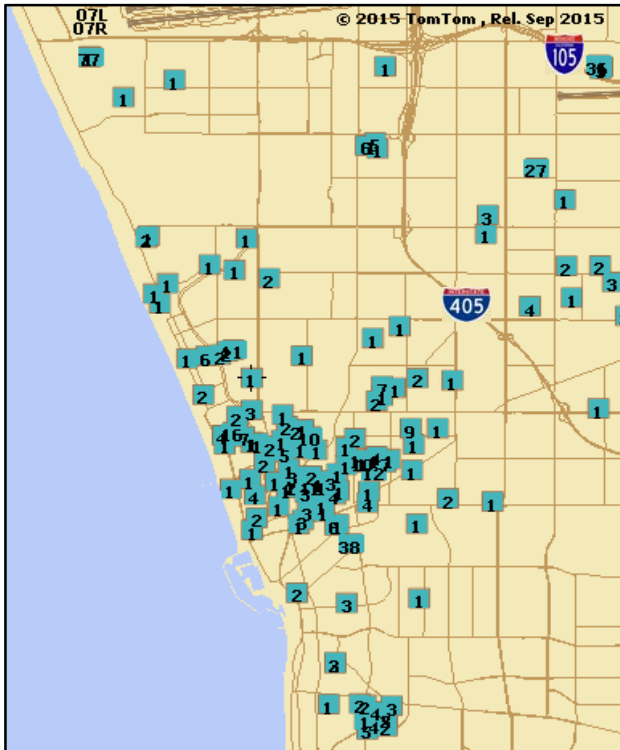
City	Individuals	Complaints	Percentage of Complaints**
Alhambra	2	10	< 1%
Calabasas	1	1	< 1%
Culver City	27	637	23%
El Segundo	5	81	3%
Gardena	3	8	< 1%
Hawthorne	9	48	2%
Hermosa Beach	36	85	3%
Huntington Beach	2	3	< 1%
Inglewood	15	104	4%
La Habra	1	7	< 1%
La Habra Heights	1	1	< 1%
Laguna Niguel	1	1	< 1%
Lakewood	1	53	2%
Lawndale	3	6	< 1%
Long Beach	2	11	< 1%
Los Angeles	39	243	9%
Manhattan Beach	16	35	1%
Monterey Park	33	517	19%
North Hills	1	1	< 1%
Pacific Palisades	2	2	< 1%
Palos Verdes Estates	2	3	< 1%
Playa Del Rey	2	3	< 1%
Rancho Palos Verdes	6	30	1%
Redondo Beach	55	180	6%
Rowland Heights	1	4	< 1%
Santa Cruz	1	45	2%
Santa Monica	10	568	20%
Topanga	1	52	2%
Torrance	10	18	< 1%
Trabuco Canyon	1	5	< 1%
Venice	1	1	< 1%
West Hills	2	8	< 1%
Westminster	1	4	< 1%
Whittier	4	10	< 1%
Woodland Hills	1	2	< 1%
<b>TOTAL</b>	<b>298</b>	<b>2787</b>	0 10 20 30 40 50 60 70 80 90 100



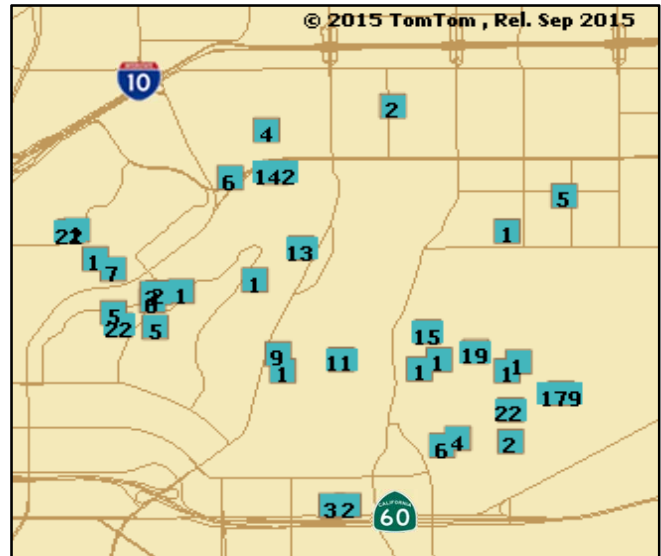
\*Box indicates the location of complainant and the number within the box indicates number of complaints submitted  
Note: Not included in map are complaints received from Laguna Niguel, Trabuco Canyon, and Santa Cruz, CA.



Map 1



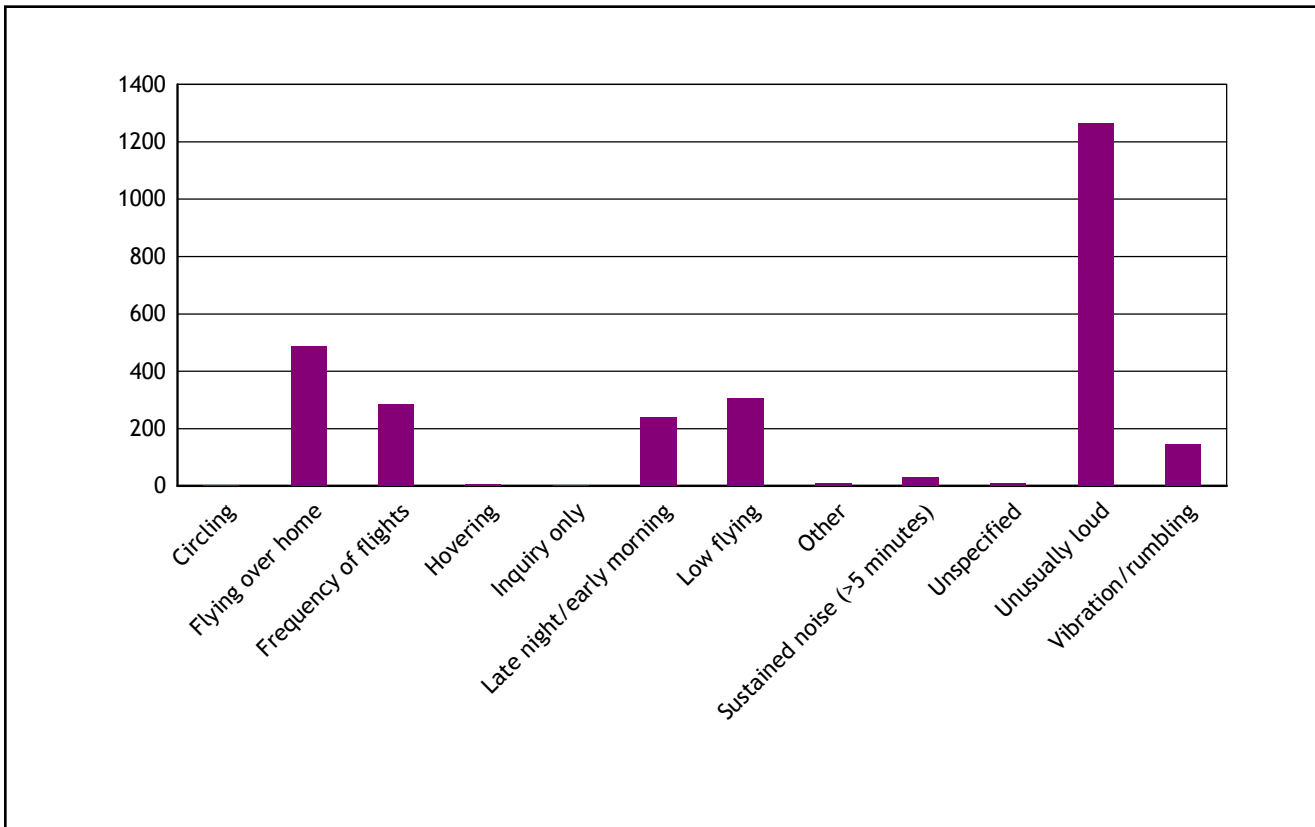
Map 2



Map 3

\*Box indicates the location of complainant and the number within the box indicates number of complaints submitted

Type of Disturbance*	Number of Complaints
Circling	4
Flying over home	486
Frequency of flights	285
Hovering	5
Inquiry only	3
Late night/early morning	238
Low flying	307
Other	10
Sustained noise (>5 minutes)	29
Unspecified	10
Unusually loud	1264
Vibration/rumbling	146
<b>TOTAL</b>	<b>2,787</b>



Note: \* As reported by complainant.

Date	Time	Operator/ Flight No.	Aircraft Type	Runway	Operation Detail	Complaint Count
01/19/2017	0:05:42	CAL007	B77W	07R	East Departure during Over Ocean	9
01/09/2017	2:53:05	QFA18	B744	06R	East Departure during West Ops	8
01/18/2017	22:48:22	AAL2471	A321	07R	East Departure during West Ops	8
01/05/2017	0:56:13	QFA96	B744	07R	East Departure during West Ops	7
01/05/2017	1:14:06	QFA16	B744	07R	East Departure during West Ops	7
01/15/2017	0:57:19	AAL193	B77W	07R	East Departure during West Ops	6
01/18/2017	23:09:05	CPA883	B77W	07R	East Departure during West Ops	6
01/18/2017	23:26:16	PAC927	B744	07R	East Departure during West Ops	6
01/19/2017	0:07:16	AAL1538	A321	07R	East Departure during Over Ocean	6
01/12/2017	1:22:31	AAL193	B77W	07R	East Departure during Over Ocean	5
01/18/2017	23:46:40	QFA96	B744	07R	East Departure during West Ops	5
01/22/2017	0:11:27	VOZ8	B77W	07R	East Departure during Over Ocean	5
01/22/2017	0:46:44	AAL193	B77W	07R	East Departure during Over Ocean	5
01/07/2017	0:36:50	QFA18	B744	07R	East Departure during Over Ocean	4
01/15/2017	0:05:54	VOZ2	B77W	07R	East Departure during West Ops	4
01/15/2017	13:10:47	PAL113	B77W	07R	East Departure during West Ops	4
01/15/2017	13:12:25	DAL185	B772	07R	East Departure during West Ops	4
01/18/2017	21:42:09	PAL103	B77W	07R	East Departure during West Ops	4
01/18/2017	21:59:18	ANZ1	B77W	07R	East Departure during West Ops	4
01/18/2017	22:31:49	ANZ5	B77W	07R	East Departure during West Ops	4
01/07/2017	0:09:47	CAL007	B77W	07R	East Departure during Over Ocean	3
01/07/2017	1:07:03	AAL193	B77W	07R	East Departure during Over Ocean	3
01/15/2017	16:23:12	AAL215	B772	07R	East Departure during West Ops	3
01/18/2017	21:00:28	CPZ5700	E170	25L	Go-around Operation	3



Period : January 2017

Date	Time	Operator/ Flight No.	Aircraft Type	Runway	Operation Detail	Complaint Count
01/18/2017	23:25:12	AAL73	B77W	07R	East Departure during West Ops	3
01/18/2017	23:45:39	UAL839	B789	07R	East Departure during West Ops	3
01/02/2017	0:03:13	CAL009	B77W	07R	East Departure during West Ops	2
01/02/2017	12:47:24	PAL113	B77W	07R	East Departure during West Ops	2
01/07/2017	0:36:05	QFA16	B744	07R	East Departure during Over Ocean	2
01/08/2017	0:05:40	PAL103	B77W	07R	East Departure during West Ops	2
01/18/2017	22:14:20	TNO300	A30B	25L	Standard Arrival Operation	2
01/22/2017	0:31:58	CAL007	B77W	07R	East Departure during Over Ocean	2

<u>Note</u>	
AAL	AMERICAN AIRLINES
ANZ	AIR NEW ZEALAND LIMITED
CAL	CHINA AIRLINES
CPA	CATHAY PACIFIC AIRWAYS LTD
CPZ	COMPASS AIRLINES
DAL	DELTA AIRLINES
PAC	POLAR AIR CARGO
PAL	PHILIPPINE AIRLINES
QFA	QANTAS AIRWAYS, LTD
TNO	AEROTRANSPORTE DE CARGA UNION
UAL	UNITED AIRLINES
VOZ	VIRGIN AUSTRALIA





Date	Start Time	End Time	Duration (hours:mins:secs)	Flow	Reason
1/1/2017	06:13:00	06:29:59	00:16:59	West Flow	SoCal TRACON Decision
1/2/2017	00:00:00	00:27:59	00:27:59	West Flow	Unknown
1/2/2017	06:08:00	06:29:59	00:21:59	West Flow	Unknown
1/3/2017	00:00:00	00:59:59	00:59:59	West Flow	Weather
1/3/2017	06:13:00	06:29:59	00:16:59	West Flow	SoCal TRACON Volume
1/5/2017	00:00:00	01:39:59	01:39:59	West Flow	Weather
1/5/2017	01:40:00	06:29:59	04:49:59	East Flow	Winds
1/6/2017	00:00:00	01:22:59	01:22:59	West Flow	Weather
1/6/2017	06:15:00	06:29:59	00:14:59	West Flow	West Operations Transition
1/7/2017	06:00:00	06:29:59	00:29:59	East Flow	Winds
1/8/2017	00:00:00	06:29:59	06:29:59	West Flow	Runway Closure (25L)
1/9/2017	00:00:00	03:08:59	03:08:59	West Flow	Due to Winds and Runway Closure (25L)
1/9/2017	03:09:00	06:29:59	03:20:59	East Flow	Winds
1/10/2017	00:00:00	06:29:59	06:29:59	West Flow	Runway Closure (25L)
1/11/2017	00:00:00	06:29:59	06:29:59	West Flow	Runway Closure (25L)
1/12/2017	02:55:00	06:29:59	03:34:59	East Flow	Visibility and Winds
1/13/2017	00:00:00	01:43:59	01:43:59	West Flow	Taxiway and Runway Closures
1/13/2017	06:21:00	06:29:59	00:08:59	West Flow	SoCal TRACON Advised
1/14/2017	00:00:00	06:29:59	06:29:59	West Flow	Taxiway and Runway (24L) Closures
1/15/2017	00:00:00	06:29:59	06:29:59	West Flow	Runway Closure (25L)
1/16/2017	06:13:00	06:29:59	00:16:59	West Flow	West Operations Transition
1/17/2017	00:00:00	00:11:59	00:11:59	West Flow	Over Ocean Operations Transition
1/17/2017	06:23:00	06:29:59	00:06:59	West Flow	SoCal TRACON Advised
1/18/2017	00:00:00	01:43:59	01:43:59	West Flow	Taxiway Closure



Date	Start Time	End Time	Duration (hours:mins:secs)	Flow	Reason
1/18/2017	05:44:00	06:29:59	00:45:59	West Flow	Flight Check
1/19/2017	01:30:00	05:41:59	04:11:59	East Flow	Winds
1/19/2017	05:42:00	06:29:59	00:47:59	West Flow	Weather
1/20/2017	00:00:00	06:29:59	06:29:59	West Flow	Weather
1/21/2017	00:00:00	06:29:59	06:29:59	West Flow	Winds
1/22/2017	05:27:00	06:29:59	01:02:59	East Flow	Winds
1/23/2017	00:00:00	06:29:59	06:29:59	West Flow	Winds
1/25/2017	06:24:00	06:29:59	00:05:59	West Flow	West Operations Transition
1/26/2017	06:18:00	06:29:59	00:11:59	West Flow	West Operations Transition
1/27/2017	00:00:00	06:29:59	06:29:59	West Flow	SoCal TRACON Request
1/28/2017	00:00:00	06:29:59	06:29:59	West Flow	SoCal TRACON Request
1/29/2017	03:55:00	06:29:59	02:34:59	West Flow	SoCal TRACON Request
1/30/2017	01:30:00	06:29:59	04:59:59	West Flow	Runway Closure (25L)
1/31/2017	00:00:00	06:29:59	06:29:59	West Flow	Runway Closure (25L)