

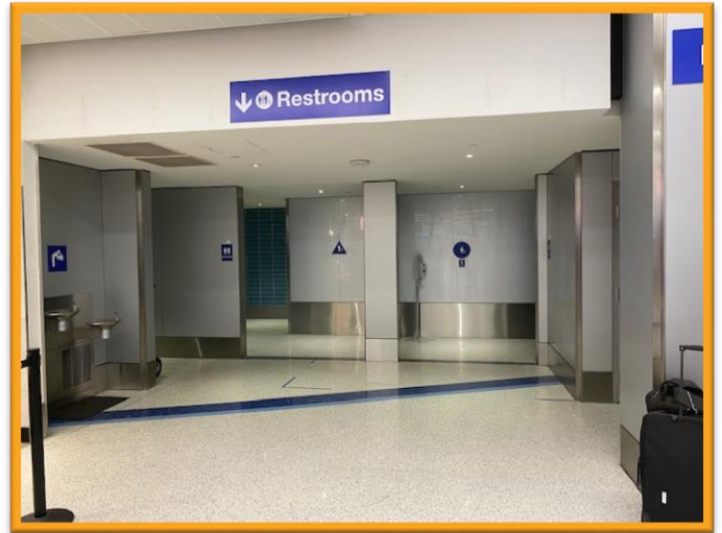
Construction Hot Topics

Week of January 20, 2020

1. Terminal 7: Arrivals Level Restroom Closures

- Men's and women's restrooms in Terminal 7, Arrivals Level (near Dunkin Donuts) are closed nightly through March 31, 2020 for structural renovation work
- Signage will be in place to direct guests to the next available restrooms during closures

Terminal 7 restrooms closed nightly



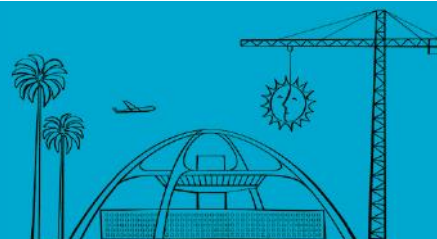
Airside cranes for Terminal 2 / 3 construction

2. Terminal 2 / 3: Airside cranes

- Cranes located airside between Terminals 2 and 3 are now visible from landside for the Delta Sky Way project, a \$1.86 billion modernization program expected to be complete in 2023

Change is in the Air(port).

LAX WAY BETTER. REALLY.



Construction Hot Topics

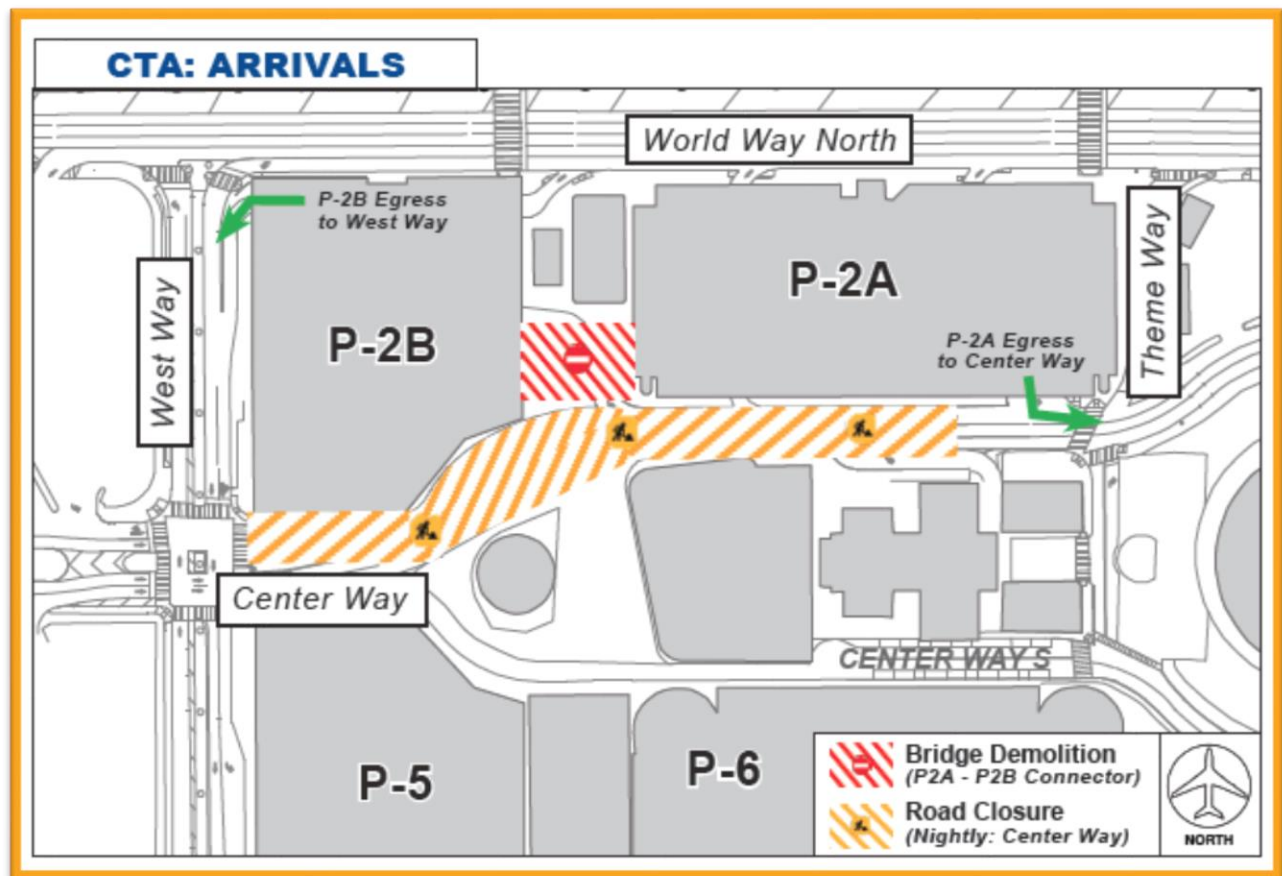
Week of January 20, 2020

3. Parking Structure 2A / 2B: Bridge Demolition

- The Automated People Mover project is demolishing the connecting bridge between Parking Structures 2A and 2B
- Structural removal of the bridge via crane pick is scheduled to be complete this week, with all activity scheduled to be completed by February 3, 2020
- During intermittent closures of Center Way for the nightly demolition, detours will be in place

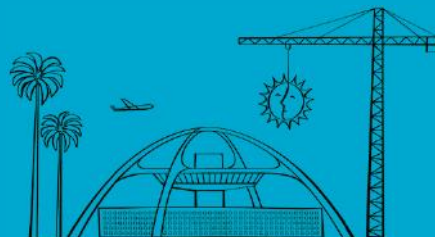


Center Way nightly closure for demolition



Change is in the Air(port).

LAX WAY BETTER. REALLY.



Construction Hot Topics

Week of January 20, 2020

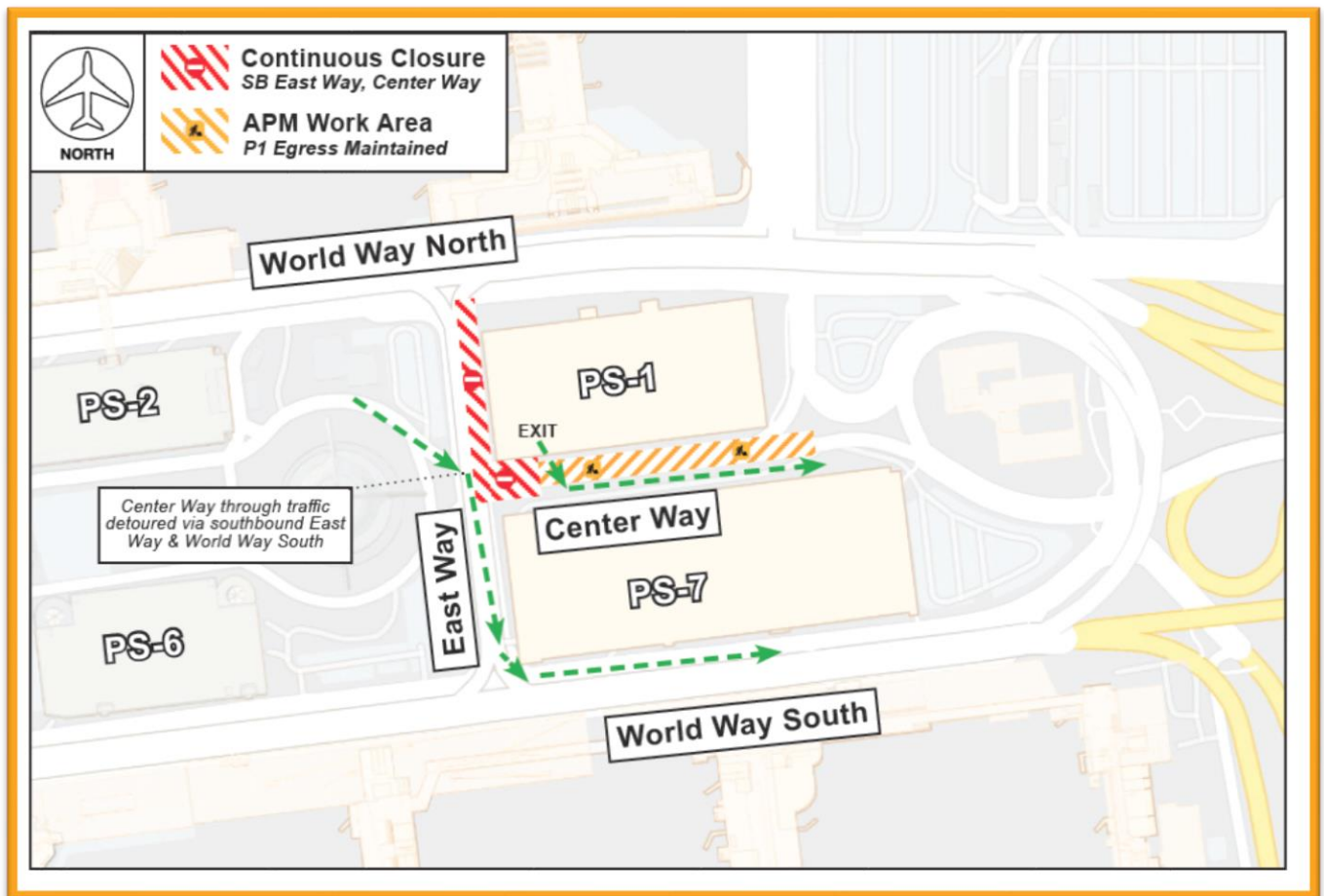
4. East Way & Center Way Closures

- Southbound East Way from World Way North to Center Way, including the intersection of Center Way at East Way, remains closed continuously through January 27 at 6AM
- Parking Structure 1 egress is maintained and detours are in place for all other traffic
- This closure is needed while two foundation piles for the Automated People Mover are installed

Foundation pile being installed on Center Way



Southbound East Way & Center Way Closure



Change is in the Air(port).

LAX WAY BETTER. REALLY.

