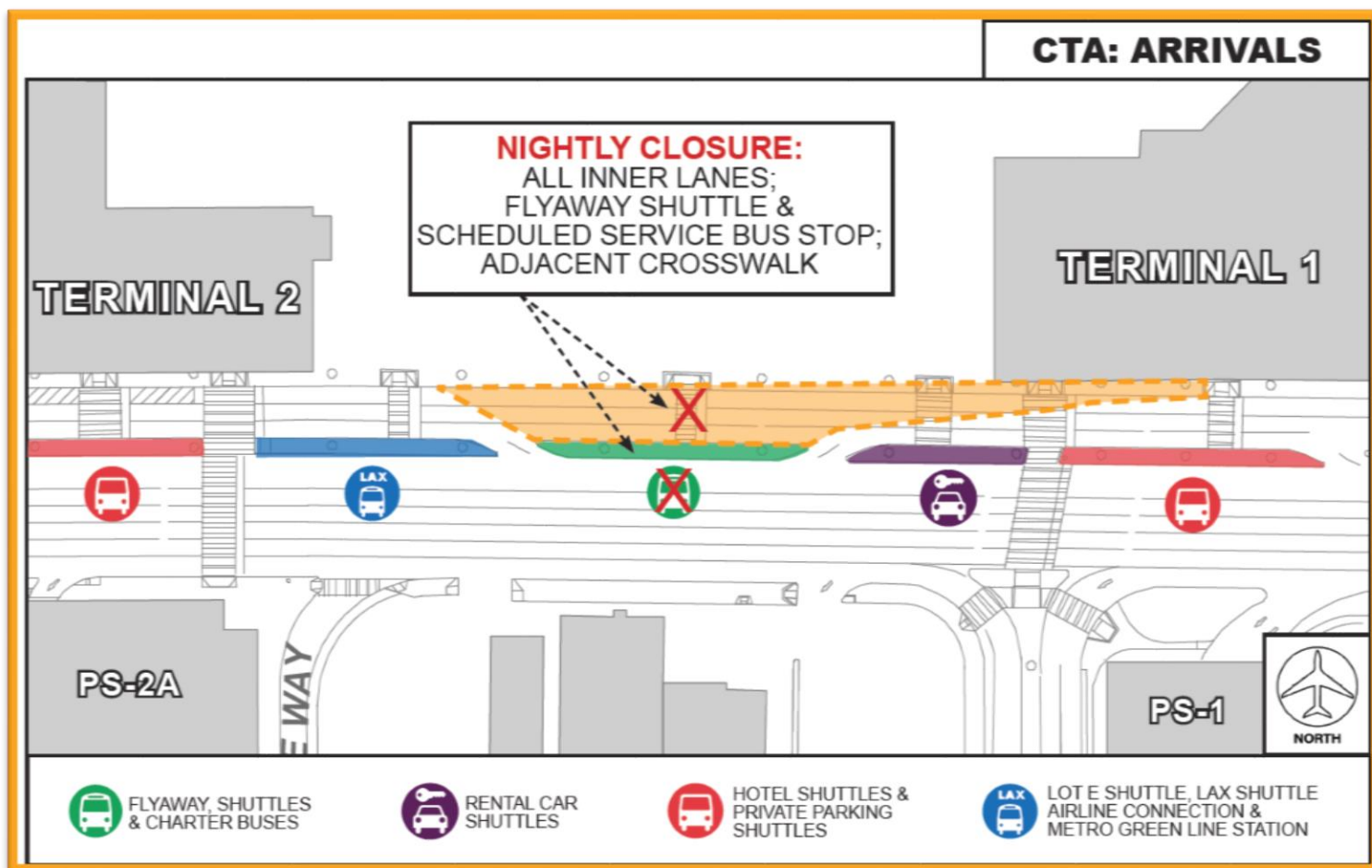


Construction Hot Topics

Week of August 26, 2019

1. Terminal 1.5: Arrivals Level Inner Lane & Shuttle Stop Closure

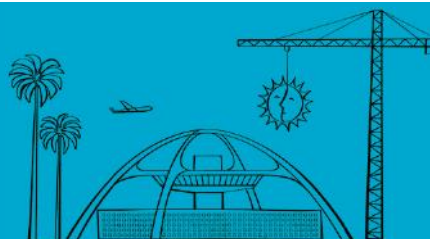
- The LAWA Utilities and LAMP Enabling Project will fully close all Arrivals Level inner lanes and the FlyAway / Scheduled Service bus stop at Terminal 1.5 nightly (12:30am – 6:30am) through September 9
- The closure will facilitate the replacement of an underground waterline; detour signage will be in place



Terminal 1.5: Inner Lane Closure

Change is in the Air(port).

LAX WAY BETTER. REALLY.

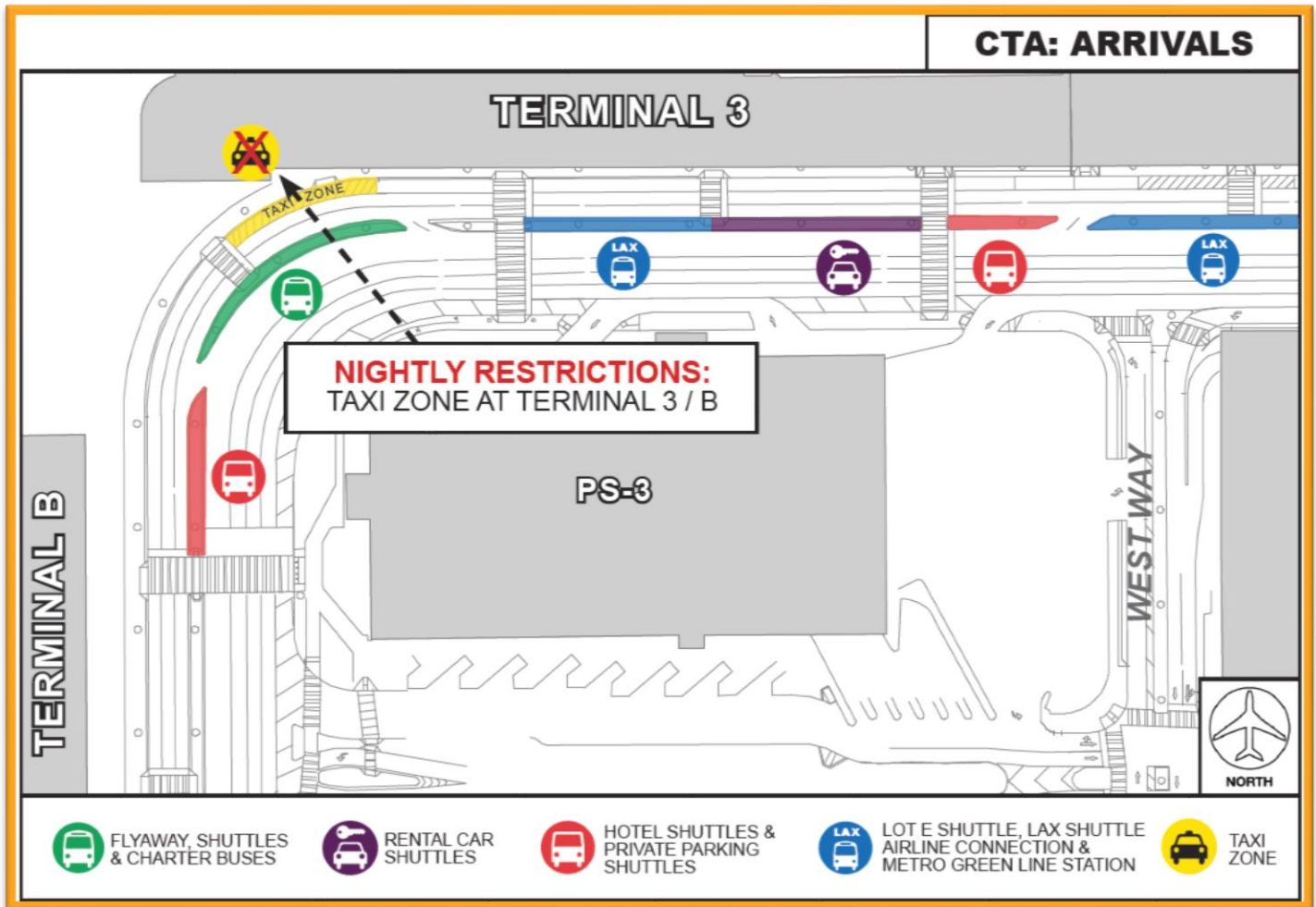


Construction Hot Topics

Week of August 26, 2019

2. Terminal 3 / B: Arrivals Level Lane Restrictions & Taxi Zone Closure

- The Terminal Cores and APM Interface Project will restrict a portion of Arrivals Level inner lanes and close the Taxi Zone between Terminal 3 and Terminal B nightly (1am – 6am) through September 5
- The closure will facilitate the installation of a new gas line; detour signage will be in place



Terminal 3 / B: Taxi Zone Closure

Change is in the Air(port).

LAX WAY BETTER. REALLY.



Construction Hot Topics

Week of August 26, 2019

3. Terminal 6: New Construction Barricades Complete

- Construction barricades are complete in Terminal 6, Arrivals Level, closing Bag Claim Device #1
- The barricades will be in place through September 20 to facilitate the relocation of Air Canada and Alaska Airline's Baggage Service Offices
- Airlines will utilize all remaining devices for passenger baggage claim; signage is in place



*Terminal 6
Construction Barricades
Bag Claim #1*



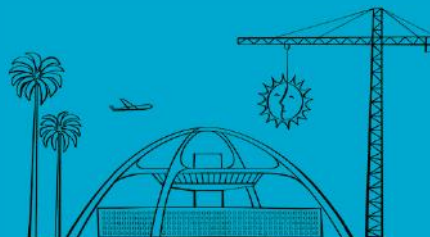
*Parking Structure 7
Ramp Demolition*

4. Parking Structure 7: Ramp Demolition

- Demolition of the old exit ramp at Parking Structure 7 onto Center Way will take place nightly (1am – 6am) through September 16 as part of the Automated People Mover Project
- During demolition, parking stalls will be reduced and the structure's northwest stairwell will be closed; detour signage will be in place

Change is in the Air(port).

LAX WAY BETTER. REALLY.

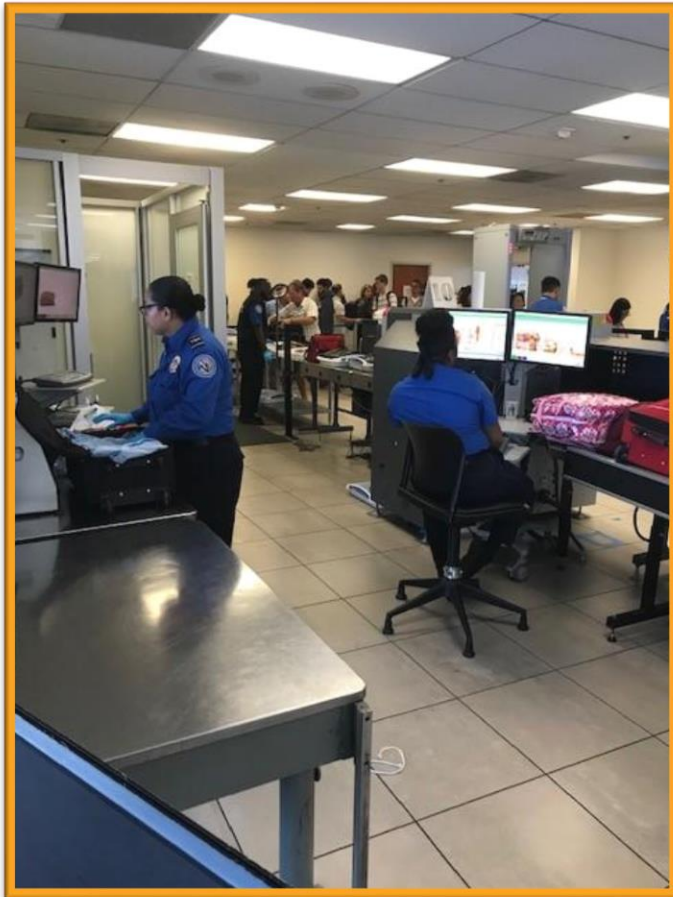


Construction Hot Topics

Week of August 26, 2019

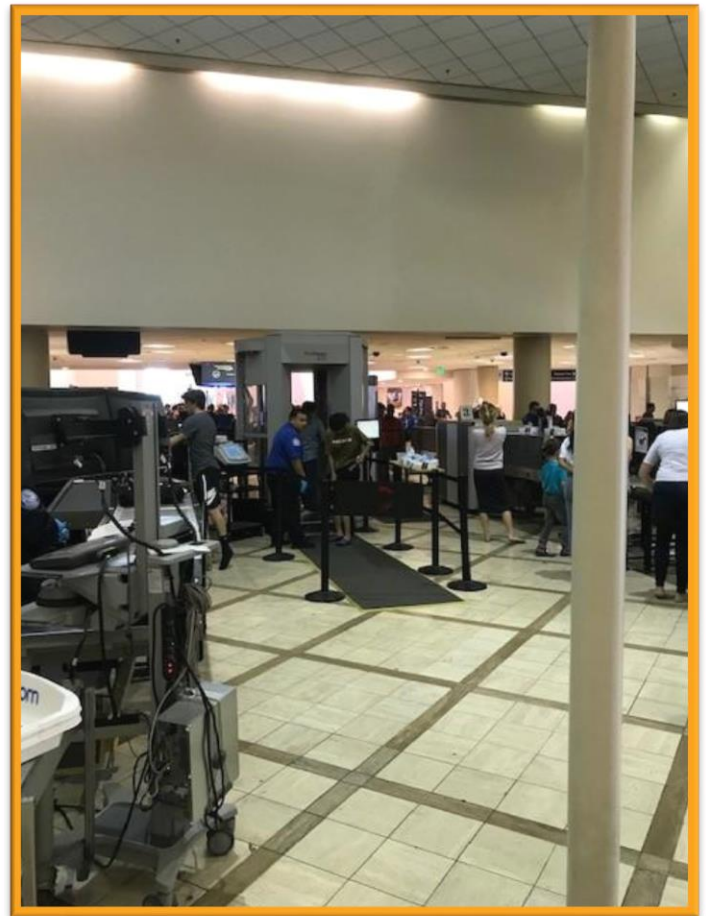
5. Terminal 4 / 5: TSA Checkpoint Restrictions

- TSA Checkpoint A in both Terminal 4 and Terminal 5 will be closed nightly (8pm – 6am) through August 30 for facility upgrades
- Passengers may utilize all remaining TSA checkpoints in both terminals for security screening
- Work in Terminal 4 is to install a new CT X-ray machine; work in Terminal 5 is to install electrical conduit to power a new TSA podium



*Terminal 4
TSA Checkpoint A*

*Terminal 5
TSA Checkpoint A*



Change is in the Air(port).

LAX WAY BETTER. REALLY.

