



Airports Development

Executive Management

Program Status Report

April 30, 2011

TABLE OF CONTENTS

Project Status	_____	3
Work in Progress	_____	30
Schedule	_____	38
Financial	_____	46
OCIP	_____	71
MWBE/DBE	_____	74

ELEMENT OVERVIEW

Purpose

This report is a tool to provide status of the Capital Projects for the Airports Development Group. The report presents status per project followed by the Master Program Schedule, a Financial section with Budget, Cash Flow and Change Orders, OCIP, MWBE/DBE, and a section listing Projects in Definition.

Airside Element

The Airside Element consists of multiple projects necessary for accommodating the movement of large aircraft between the north and south runways; reconfiguring traffic movement to accommodate the Tom Bradley International Terminal (TBIT) expansion and modernization program; and provide airfield improvements as required by Airfield Operations, the Federal Aviation Administration and other Federal and State regulatory agencies.

Bradley West Element

The Bradley West Element provides for certain improvements identified in the approved LAX Master Plan, specifically related to development of new aircraft gates at the Tom Bradley International Terminal. The new gates will support the airport's ability to effectively and efficiently accommodate new large aircraft, such as the Airbus A380, Boeing 747 and Boeing 747-8. In addition, the project calls for substantial improvements related to the concourses and central core area of the Tom Bradley International Terminal, including:

- construction of new north and south concourses at the terminal, west of the existing concourses, which would be removed;
- construction of eight aircraft gates and associated loading bridges and apron areas, along the west side of the new terminal concourses;
- relocation and consolidation of existing aircraft gates along the east side of the Tom Bradley Terminal;
- renovation and enlargement of the existing U.S. Customs and Border Protection areas within the central core of the terminal; and
- construction of the secure passenger corridors between Terminals 3 and 4, and the Bradley Terminal.

ELEMENT OVERVIEW - Continued

Central Utility Plant (CUP) Replacement Element

The CUP Replacement Element includes replacing the existing CUP, constructed in 1961, and the co-generation facility, brought into service in 1985, which are considered obsolete and inefficient relative to present-day technology, the distribution network between the CUP and the terminals, and various mechanical/electrical infrastructure improvements within the terminals.

Utilities and Infrastructure Element

These capital improvement projects are critical utility and infrastructure elements that support Terminal and Airport operations within the Central Terminal Area (CTA). Current construction projects include the In-Line Baggage Screening System program consisting of the construction of fully integrated Transportation Security Administration (TSA) screening equipment in Terminal 3 and removal of lobby machines, plus, the IT Fiber Loop Backbone project which will provide new connectivity between all Terminals and the Telecommunication Building.

Landside Element

The Landside Element undertakes capital projects designed to provide for the efficient and effective movement of people through the airport; and to provide convenient parking for individuals using the airport. Landside projects are typically related to parking lots, public transportation, train stations, tank farms, warehouse and cargo areas and access roads and perimeter fencing.

Residential / Soundproofing Element

LAWA has implemented a voluntary Airport Residential Soundproofing Program (RSP) for aircraft noise impacted areas in the City of Los Angeles. This program is for impacted homes adjacent to the Los Angeles International Airport (LAX) and Van Nuys (VNY).

ELEMENT OVERVIEW - Continued

Terminals Element

Most of LAX's Terminals have been serving their purpose without major renovations or modernization efforts over the years. As needs change, the Terminal spaces and structures need repairs, upgrades, modernization, and standardization to satisfy these changing demands. From modernizing elevators and escalators with standardized devices to updating fire/life safety systems, the Terminals Element is focused on implementing these necessary improvements.

Work in Progress

This section lists the projects that are in various stages of pre-development. Typically, these projects represent efforts for which LAWA has committed funding for the design; not the construction. A project in this category will experience variability as the design is refined. If approved, projects in Work in Progress will be moved into the appropriate execution element. If not approved, projects will be dropped from this report.

AIRSIDE ELEMENT - Construction Support Facilities (M209A)

Project Description

The project includes the construction of a new aircraft parking ramp/block, new emergency exits for American Airlines Maintenance Hangar, airfield security fencing, building modifications, and other miscellaneous construction activities as may be required.

Planning and Programming Status

Project Definition is complete.

Design Progress

Design is 100% complete.

Construction Progress

First construction contract awarded to Griffith Construction on April 21, 2009.

Notice to Proceed issued June 29, 2009.

Construction is 98% complete.

Budget Status

This project is anticipated to complete on budget.

Schedule Status

Subconsultant has started investigating electrical vaults for the replacement FAA fiber work. Contract has been extended to May 24, 2012 for future work requirements.

Issues

None at this time.

AIRSIDE ELEMENT - Crossfield Taxiway Project (M101A)

Project Description

The project entails the construction of a 3,437-foot-long by 100-foot-wide taxiway that connects Taxiway 'B' on the south and Taxiway 'E' on the north. To facilitate this construction, there will be removal of existing deteriorated concrete pavement and the removal of asphalt pavement replaced with Portland Cement Concrete (PCC) and asphalt concrete pavement. This project also constructs a new parallel service road and a replacement apron for Remain Overnight (RON) and the following facilities:

- * Realignment of World Way West and two bridges over the road; one for aircraft crossing as a part of taxiway C13 and the other for vehicular traffic;
- * Taxiway centerline electrical, lighting and signage;
- * Pavement markings, including centerline, edge striping and edge reflectors; and
- * Installation of redesigned drainage and modifications to existing utilities.

Planning and Programming Status

Project Definition is complete.

Design Progress

Design is 100% complete.

Construction Progress

Construction contract awarded to R & L Brosamer Inc. on March 23, 2009.

Construction Notice to Proceed issued May 11, 2009.

Taxiway 'R' opened on May 24, 2010.

Construction is 100% complete.

Budget Status

The final change orders have been negotiated. Final processing is anticipated to complete in May 2011. This project is expected to complete under budget.

Schedule Status

Final project acceptance expected in May 2011.

Issues

None at this time.

AIRSIDE ELEMENT - LAX Aircraft Rescue and Fire Fighting Facility (M107A)

Project Description

The new Aircraft Rescue and Fire Fighting Facility (ARFF) is proposed to be constructed as a replacement for the existing Fire Station No. 80. This new facility will be located on World Way West just west of Remain Over Night (RON) aircraft aprons situated relative to the mid-points of the outmost runways (Runway 6L/24R on the north and Runway 7R/25L on the south). The proposed ARFF would provide approximately 27,500 square feet of administrative office area and station living quarters within a 2-story structure, six bays for emergency vehicles along with a service bay, storage area for various emergency response equipments, and briefing and training rooms.

Planning and Programming Status

Project Definition is complete.

Design Progress

Design is 100% complete.

Construction Progress

Construction contract awarded to Tobo Construction on June 10, 2009.

Administrative Notice to Proceed issued July 10, 2009.

Construction Notice to Proceed issued September 4, 2009.

Construction is 100% complete.

The Grand Opening of the LAX Aircraft Rescue and Firefighting Station 80 was held on November 22, 2010.

Budget Status

This project is expected to complete under budget. Final processing is anticipated to complete in June 2011.

Schedule Status

Certificate of Occupancy was signed-off on February 24, 2011.

Notification of Acceptance of Contract was issued on March 17, 2011.

Final Change Order and Final Payment Request were issued in March 2011.

Issues

None at this time.

AIRSIDE ELEMENT - Bradley West - Aprons (M205A)

Project Description

The Bradley West Aprons project contains an East and West component. The Bradley West Aprons project consists of approximately 34,000 square yards of pavement and associated drainage covering the aprons on the west side of the north and south Concourses as well as the apron west of the Core. This apron construction includes all grading, utilities, airfield signage and lighting; construction of LADWP power and communication ductbanks; and the LAWA power and communication ductbanks.

The Bradley East Aprons project entails construction of approximately 121,000 square yards of pavement and associated drainage from the edge of the new Concourses to the edge of Taxilanes C10/D10. It includes all grading, drainage, utilities, airfield signage and lighting; construction of LADWP power and communication ductbanks; and the LAWA power and communication ductbanks.

Planning and Programming Status

Project Definition is complete.

Design Progress

West Aprons awarded design is 100% complete.
East Aprons design is 50% complete.

Construction Progress

The Bradley West Gates and Core - West Aprons:
Walsh-Austin JV construction of the BW West Aprons started June 2010 and is scheduled to complete in July 2012.

East Aprons -
No construction contracts awarded.

Budget Status

This project is tracking on budget.

Schedule Status

This project progressing on schedule.

Issues

None at this time.

AIRSIDE ELEMENT - Taxilane 'S' (M204A)

Project Description

This project undertakes the relocation of certain ancillary and support facilities; and constructs a 3,785-foot long Taxilane to connect Taxiway 'B' on the south and Taxiway 'E' on the north. Taxilane 'S' will be constructed as part of a 400 foot wide Portland Cement Concrete (PCC) paved strip which will be the first part of the future Dual Taxilane / Taxiway System between the proposed Midfield Satellite Concourse and the Tom Bradley International Terminal. The centerline is located 242 feet west of the existing Taxiway 'Q' centerline. A 169-foot-Object Free Area (OFA) will be provided on the east side of the Taxilane 'S' centerline in accordance with the FAA approved Airport Layout Plan (ALP). This construction also includes the relocation of fuel lines and other utilities, all grading, airfield signage and lighting, construction of LADWP power and communication ductbanks; and the LAWA power and communication ductbanks. Additionally, Taxiway D will be extended approximately 1,000 feet west from Taxiway Q.

The project also includes the construction of approximately 60,000 square yards of pavement and associated drainage covering the aprons on the west side of the north and south Concourses as well as the apron west of the Bradley Core. This apron construction includes all grading, utilities and airfield signage; construction of LADWP power and ductbanks; and the LAWA power and communications ductbanks.

Planning and Programming Status

Project Definition is complete.

Design Progress

Design is 100% complete.

Construction Progress

Construction contract awarded to Flatiron West, Inc. on December 7, 2009.

Administrative Notice to Proceed issued on December 18, 2009.

Construction Notice to Proceed issued on March 1, 2010.

Concrete batch plant was operational in February 2011. Econcrete paving began in February 2011.

Construction is 47% complete for Package 1 (Taxilane S).

Budget Status

This project is tracking to the budget.

Schedule Status

Taxilane 'S' is anticipated to open in July 2011. However schedule impacts from various sources including additional contaminated soil, World Way West utilities and weather delays have impacted this completion date.

AIRSIDE ELEMENT - Taxi lane 'S' (M204A) - Continued

Issues

- * New natural gas service to the Bradley West across new Taxi lane 'S' will have schedule and cost impacts.
- * New storm drain construction south of the Concourse Construction Package (CCP) is being accelerated to provide construction access for Walsh Austin.
- * Remain Overnight (RON) position 5 paving work adjacent to Taxiway Romeo will need to be paved by the Taxi lane S contractor and will have schedule and cost impacts.
- * Access to the Package 2 Area (BW Aprons) may be impacted by the Concourse Construction Package (CCP) Project requesting area for prefabricated roof assembly.

AIRSIDE ELEMENT - Taxilane 'T' (M306A)

Project Description

The project consists of the construction of a 3,166-foot long Taxilane to connect Taxiway 'C' on the south and Taxiway 'D' on the north. Taxilane 'T' will be constructed as part of a 300 ft. wide Portland Cement Concrete (PCC) paved strip which will be the second part of the future Dual Taxilane / Taxiway System replacing existing Taxiways 'Q' and 'S', west of reconfigured Tom Bradley International Terminal (TBIT). The Taxilane 'T' centerline is located 818 feet west of the existing Taxiway 'Q' centerline. A 169-foot-Object Free Area (OFA) will be provided on the west side of the Taxilane 'T' centerline in accordance with the FAA approved Airport Layout Plan (ALP). This construction also includes the Taxilane "T" Service Road, the relocation of fuel lines and other utilities, all grading, airfield signage and lighting, construction of LADWP power ductbanks; and the LAWA power and communication ductbanks. This Scope of work also includes associated projects which consist of the Demo American Airlines (AA) Low Bay Hangar, Relocate and Demo H2O Deluge System, Demo Existing Sky Chef airline catering facility, Partial Demo American Airlines (AA) (former TWA) Hangar, an Emission Reduction Credit and Site Restoration of Southwest Apron Remain Overnight (RON) parking area.

Planning and Programming Status

Project Definition is complete.

Design Progress

1 - Taxilane T:

The design contract for Taxilane T was awarded to Kimley Horn & Associates on November 15, 2010.

- * Task Order 1 (Taxilane T) was approved on February 22, 2011. Anticipating 30% design submission by mid-May 2011.
- * Task Order 2 (TWA Hangar) and Task Order 3 (Low Bay Site Restoration) are being reviewed and negotiated.

2 - Demo AA Low Bay Hangar and Deluge System:

The design of the Demo AA Low Bay Hangar and Deluge System will be completed in June 2011 by AECOM, Inc.

3 - Southwest Apron Remain Overnight (RON) Parking Area:

The design for the Southwest Apron Remain Overnight (RON) parking area was awarded to Post, Buckley, Schuh & Jernigan, Inc. (PBS&J) in September 2010. Received 90% design drawing in April 2011 from PBS&J. ADG is currently reviewing the design.

Construction Progress

No construction contracts awarded.

Budget Status

This project is tracking on budget.

AIRSIDE ELEMENT - Taxilane 'T' (M306A) - Continued

Schedule Status

1 - Taxilane T:

Kimley-Horn and Associates has proceeded with the design of Taxilane T as directed in Task Order #1.

Issues

1 - Taxilane T:

* Delayed site access availability of Sky Chef and American Airlines Leaseholds may impact project schedule.

2 - Demo AA Low Bay Hangar and Deluge System:

* The completion of the Demo AA Low Bay Hangar and Deluge System has been adjusted to June 2011 to accommodate the revision to relocate the deluge system adjacent to the Coast Guard.

AIRSIDE ELEMENT - Demolition of Existing Concourses (M210A)

Project Description

Upon completion of the new Bradley West Concourses, this project includes demolition of the existing concourses with the exception of Gate 123, demolition of any existing utilities and restores the site to an appropriate state for Apron construction.

Planning and Programming Status

Project Definition is complete.

Design Progress

No design contract awarded.

Construction Progress

No construction contract awarded.

Budget Status

This project is tracking on budget.

Schedule Status

This project is progressing on schedule.

Issues

None at this time.

AIRSIDE ELEMENT - Pavement Management Program - VNY Taxilane A2 Rehabilitation and RSA Improvements (A010A)

Project Description

This project will rehabilitate the existing asphalt concrete pavement for Taxilane A2 and construct a dual taxilane, among other improvements. Additionally, this project will improve airfield lighting and signage for Taxilane A2 and improvements on Runway Safety Area (RSA) for Runway 16L/34R.

Planning and Programming Status

Project Definition is complete.

Design Progress

Design is 100% complete.

Construction Progress

Construction contract awarded to Griffith Company on August 2, 2010.

Administrative Notice to Proceed was issued on September 7, 2010.

Construction is substantially complete. Punch list work anticipated to complete early May 2011.

Budget Status

This project is tracking on budget.

Schedule Status

Construction Notice to Proceed was issued in November 8, 2010. The project's original completion date of February 2011 was extended through March 2011 due to rain delays.

Administrative time extension to be issued to complete punch list items and to close-out project until mid May 2011.

Issues

None at this time.

BRADLEY WEST ELEMENT - Bradley West Gates (M201A)

Project Description

The project consists of the construction of new double-loaded North and South Concourses at Tom Bradley International Terminal (TBIT). The configuration of the concourses will be based upon the approved aircraft parking layout consisting of nine (9) A380 gates and five (5) Airplane Design Group (ADG) V gates and three (3) narrow-body gates. In addition, the work will consist of constructing approximately 540,000 sq ft of space for passenger services (concessions, toilets etc.), building systems (mech/elect/plumbing), building maintenance, airline operations, retail/food service concessions, concessions storage areas, back of house secured circulation space and airline lounges. The project will also include Building Systems (pedestrian transportation systems, HVAC, electrical and plumbing, drainage, lighting), Telephone System, Life Safety Systems (PA and smoke/fire detection, alarm and sprinkler) and Terminal Systems such as Electronic Visual Information Display System (EVIDS), baggage conveyance, building management systems, access control, intrusion alarm, etc.

Planning and Programming Status

Project Definition is complete.

Design Progress

Design is 90% complete.

Construction Progress

Enclosure and MEP (Mechanical, Electrical & Plumbing) work on North Concourse continues.

Architectural shear wall pours at North Piers are on-going.

Steel Erection on the South concourse continues.

South Concourse Slab on Grade / Slab on Metal Deck Pours are on-going.

Shoring, Excavation & Foundations continue on South Piers.

Budget Status

This project is anticipated to complete on budget (inclusive of contingency reserves).

Component Guaranteed Maximum Price 01 through 14 have been approved by the Board.

Buy out is 94% complete.

BRADLEY WEST ELEMENT - Bradley West Gates (M201A) - Continued

Schedule Status

Gates 134 Substantial Completion

Target Date: 08/01/12 Forecast Date: 8/01/12

West Gates Substantial Completion

Target Date: 12/12/12 Forecast Date: 12/12/12

East Gates Substantial Completion

Target Date: 10/19/13 Forecast Date: 11/26/13

Issues

The January 2011 WAJV schedule submittal reports that the Bradley West Gates component of the schedule is meeting contract milestone requirements.

The contract schedule update does not include key change information related to Gates Bulletins 2 through 5. Extended work hours continue in critical areas of the construction site, and when conditions are allowable.

BRADLEY WEST ELEMENT - Bradley West Core Improvements (M203A)

Project Description

This project will provide improvements to the Federal Inspection Service (FIS) facilities in Tom Bradley International Terminal (TBIT) and allow for the development of new 693,000 sf improved departure level (post security) passenger amenities, including new restrooms, concessions, airline lounges, and administrative offices within TBIT's existing north and south concourses; renovates, improves and enlarges the space used by the FIS and the Customs and Border Patrol (CBP); constructs secure/sterile passenger corridors between TBIT and Terminals 3 and 4; and renovates and improves existing facilities throughout TBIT including re configuration of the security screening checkpoint.

Planning and Programming Status

Project Definition is complete.

Design Progress

Design is 80% complete.

Construction Progress

Core Steel Erection has commenced.

Core Basement Wall pours continue.

Under Slab MEP, Wall & Spread footings continue.

Budget Status

This project is anticipated to complete on budget (inclusive of contingency reserves).

Component Guaranteed Maximum Price 01 through 15 have been approved by the board.

Buy out is 59% complete.

Schedule Status

Core Substantial Completion

Target Date: 12/12/12 Current Forecast Date: 1/18/13 **

**Current forecast date includes the results of recovery planning efforts.

BRADLEY WEST ELEMENT - Bradley West Core Improvements (M203A) - Continued

Issues

Core construction is currently in the Steel Erection phase, which is program Critical Path work. Any substantial delays to the steel erection process will have an effect on the New Core Substantial Completion Milestone date.

Steel erection was impacted by about one (1) week due to a Cal OSHA requirement to install a temporary manlift inside the Core footprint. Impacts to be determined.

Extended work hours continue in critical areas of the construction site, and when conditions are allowable.

The WAJV January 2011 contract schedule submittal shows a completion date for New Core Construction on 5/2/13. Core Bulletin 0 schedule impacts have not yet been incorporated into the program schedule.

BRADLEY WEST ELEMENT - Construction Traffic Mitigations (M203B)

Project Description

The general scope of work involves improving roadway capacity at the two intersections identified by the Bradley West Project Environmental Impact Report as being affected by the Bradley West construction activities and enhancing safety at the future construction contractor parking area.

Planning and Programming Status

Project Definition is complete.

Design Progress

Design is 100% complete.

Construction Progress

BOAC awarded construction contract DA-4478 to Griffith Company on June 28, 2010.

Administrative Notice to Proceed (NTP) was issued on July 29, 2010 and construction NTP issued September 7, 2010.

Overall construction is approximately 95% complete.

The widening for all three phases has been completed.

Budget Status

This project is tracking on budget.

Schedule Status

The overall project is on schedule to be complete in May 2011.

Issues

The contractor is working with the city of Los Angeles to complete the traffic signal work at the Bradley West Drive Parking Lot.

BRADLEY WEST ELEMENT - Art In Public Places (M308A)

Project Description

The program, part of the City of Los Angeles commitment to the community, commissions local artists to produce original artwork for public places. The City passed a law in 1989 allocating one percent of all capital improvement costs to commission art in public places. The Department of Cultural Affairs administers this program through its Public Art Division, aiming to utilize this one percent to contribute enduring, contemporary art experiences to public facilities in the City.

Planning and Programming Status

Proposals from six nominated Los Angeles-based artists have been received and are being reviewed by the Art Oversight Committee (AOC).

Design Progress

No design contract awarded.

Construction Progress

No construction contract awarded.

Budget Status

This project is tracking to the budget.

Schedule Status

This project is anticipated to complete on schedule.

Issues

None at this time.

CUP REPLACEMENT ELEMENT - Central Utility Plant (C001A)

Project Description

The project provides a replacement Central Utility Plant (CUP) to supply heating hot-water and chilled water to the Central Terminal Area (CTA); the required chillers, pumps, generators, boilers and piping to produce and distribute the hot and cold water; and gas turbine driven generators with heat recovery steam generators (co-generation). The project also includes:

Temporary Power and Associated Relocations Project (TPAR): Construction of a new substation to feed power to the existing CUP and installation of replacement switchgear to allow demolition of the CUP Maintenance Shop Building.

Utility Distribution System: This project includes interconnection to existing piping as well as providing completely new services to Bradley West and the existing terminals and the replacement or bypassing of some existing piping.

Demolition: Demolition of the existing CUP, cooling towers, an electrical substation and existing maintenance buildings located at the footprint of the new CUP.

Facility Management and Control System (FMCS): FMCS to be located in the control room and related control equipment to be furnished for installation in the mechanical rooms of the terminals.

Planning and Programming Status

Project Definition is complete.

Design Progress

CUP design builder, Clark/McCarthy (CMJV) initiated 60% design in April.

Construction Progress

The Walsh-Austin Joint Venture (WAJV) is responsible for the construction of the Temporary Power and Associated Relocations Project (TPAR). TPAR construction is delayed until late May 2011 due to weather impacts and contractor delays in the completion of their work.

CUP design builder, Clark/McCarthy (CMJV) is continuing survey and potholing for design.

A Temporary Interim Maintenance Building is being located in Parking Structure P2B. This will house maintenance shop staff during construction of the new Interim Maintenance Building.

Budget Status

This project is tracking to budget.

CUP REPLACEMENT ELEMENT - Central Utility Plant (C001A) - Continued

Schedule Status

CMJV's submitted baseline schedule was returned 'Revise and Resubmit' primarily for two reasons:

1. Schedule logic exceptions
2. Contract milestone qualification letter

Although CMJV's baseline schedule finished within contract milestone dates, CMJV had requested 130 days relief equaling Bid Protest period.

Issues

TPAR potential schedule impact is currently under review.

UTILITIES & INFRASTRUCTURE ELEMENT - Airport Response Coordination Center (ARCC) (U009A)

Project Description

This project will provide a centralized response coordination center on the 4th floor of the existing Badging Building located at 7333 World Way West at Los Angeles International Airport (LAX). The project will improve efficiency and communication for day to day operations and response to incidents by collocating various shared operational functionalities into one consolidated location. The new Airport Response Coordination Center will co-locate Airfield Operations, Terminal Operations, Construction and Maintenance, non-emergency Airport Police functions, and traffic management staff into a joint use facility. This new office environment, will utilize information technology for audio, video, CCTV, voice, network, Cable TV connections, PCs, and associated video wall and peripherals to improve situational awareness and communication among various Divisions and staff at LAX.

Planning and Programming Status

Project Definition is complete.

Design Progress

Design is 100% complete.

Construction Progress

The construction contract was awarded to Technion Contractors, Inc. (TCI) on May 17, 2010 and the Notice to Proceed for construction was issued to TCI on June 14, 2010.

The ARCC went operational on December 15, 2010.

Problems with existing backup power systems at the Admin West Data Center (AWDC) require major electrical equipment replacement for full IT system redundancy. TCI has completed installing an Uninterrupted Power Supply (UPS) unit to provide necessary redundancy for ARCC IT system and equipment in AWDC.

The contractor is completing commissioning and final punchlist work to obtain final building permit sign-off.

LAWA is completing final change order negotiations.

Budget Status

The budget variance is being evaluated.

UTILITIES & INFRASTRUCTURE ELEMENT - Airport Response Coordination Center (ARCC) (U009A) - Continued

Schedule Status

This project was substantially completed and the ARCC began live operations on December 15, 2010.

Final contract acceptance is anticipated by the end of May 2011.

Issues

LANDSIDE ELEMENT - AOA Perimeter Fence (World Way West) Phase 3 (L003A)

Project Description

This project will enhance approximately 2.2 miles of fence from Taxiway AA to Coast Guard Road of LAX and will be constructed in the same manner as Phases 1 and 2. This project also provides security lighting and electrical duct banks along portions of World Way West from Taxiway AA to Coast Guard Road.

Planning and Programming Status

Project Definition is complete.

Design Progress

Design is 100% complete.

Construction Progress

Construction contract awarded to Griffith Company December 8, 2008.

Notice to Proceed issued January 22, 2009.

Construction is 100% complete including final punch list items.

Budget Status

This project has been completed under budget. Final processing is anticipated to complete in June 2011.

Schedule Status

This project has been completed.

Final Change Orders and Payment Request are completed.

Notice of Acceptance of the project has been filed with the County Recorder.

Issues

None.

RESIDENTIAL/SOUNDPROOFING ELEMENT - Aircraft & Noise Monitoring & Management System (ANMMS)-LAX (S004A)

Project Description

LAWA installed a state of the art Aircraft and Noise Monitoring and Management System (ANMMS) in 1990. The monitors measure noise 24 hours a day, 365 days a year. ANMMS measures airport generated noise in the community, tracks and identifies aircraft within a certain radius of the airport, and is used to help LAWA produce maps showing the noise impact area, as required by the State of California. LAWA continually monitors its ANMMS to ensure the accuracy of noise data and related operations information, and to improve the access to and utilization of the various types of available data.

Planning and Programming Status

Project Definition is complete.

Design Progress

Design is 100% complete.

Construction Progress

Construction contract awarded to Lochard Corporation on October 4, 2004.

Budget Status

This project is anticipated to complete on budget. Final processing is anticipated to complete in August 2011.

Schedule Status

The system has been accepted and punch list activities are ongoing.

Issues

None.

RESIDENTIAL/SOUNDPROOFING ELEMENT - Noise Mitigation/Soundproofing (City of LA) (S002A)

Project Description

This project will provide soundproofing of approximately 9,400 eligible dwelling units making them land use compatible.

Planning and Programming Status

Not applicable.

Design Progress

Corlett Skaer & DeVoto was selected for a Short Form Contract not to exceed \$150,000. NTP has been issued to design plans on 78 units.

Construction Progress

Various Construction Contracts ongoing.
This component of the Noise Mitigation / Soundproofing Program is 89% complete.

Budget Status

This project is trending to complete on budget.

Schedule Status

This project is on track to be completed in 2012.

Issues

TERMINAL ELEMENT - Elevators and Escalators Replacement (T001A)

Project Description

This project will upgrade / replace all aging elevators, escalators and moving walkways at LAX, which have exceeded their useful life expectancy. These units will be upgraded/replaced in staggered Priority Groups.

Planning and Programming Status

Project Definition is complete.

Design Progress

Priority II-IV Site Mods - Design is 100% complete.

Priority II-IV GC MRL Elevators - Design is 50% complete.

Construction Progress

Priority I Site Mods - Construction contract awarded to W.E. O'Neil Construction Company on August 17, 2009 - Construction is 79% complete.

Priority II - Procurement - NTP issued to Schindler Elevator Corporation on April 19, 2010. Fabrication has begun.

Priority II-IV Site Mods - Bid window opened on December 21, 2010 - Bids were received on March 3, 2011.

Priority II-IV GC MRL Elevators - No construction contracts awarded.

Budget Status

Each active project remains on track to finish within the respective project budget.

Schedule Status

The Priority 1 Units are currently running seventy-two working days behind schedule due to design deficiencies, incomplete as-built drawings, or a combination of both. Resequencing future work is underway and Milestone extensions are being issued to account for compensable delays. A forthcoming Change Order is being prepared for Board Action in May.

Issues

Sequence of work at Terminal 6 may cause delays to the current KONE contract - dependent on the Hensel-Phelps schedule.

WORK IN PROGRESS OVERVIEW

User's Guide - Work in Progress

This section lists the projects that are in various stages of pre-development. Typically, these projects represent efforts for which LAWA has committed funding for the design; not the construction. A project in this category will experience variability as the design is refined, until it is deemed operationally and economically viable and moved into an execution element.

WORK IN PROGRESS - Interim Taxiway Safety Improvement Project (ITSIP) (A006B)

Project Description

The Interim Taxiway Safety Improvement Project (ITSIP) relocates three high-speed exit taxiways between the North Airfield Runways. The relocated taxiways reduce the likelihood and severity of potential runway incursions without significant impacts to runway occupancy and operational efficiency. The construction elements include demolition and decommissioning of existing taxiways, construction of new taxiways using concrete and asphalt pavement, pavement striping and marking, airfield lighting modifications and modifications to navigational equipment, as needed.

Issues / Status

The design was awarded to Post, Buckley, Schuh & Jernigan, Inc. (PBS&J) in September 2010. The scoping and cost validation work is underway.

WORK IN PROGRESS - Pavement Management Program - VNY Taxilane A2 Rehabilitation - Phase 2 (A010B)

Project Description

This project is the second, and last, phase of pavement rehabilitation of Taxilane A2 at Van Nuys Airport. This complete rehabilitation of the taxilane will allow for its dual usage which will increase safety and allow for further development of aviation services within that portion of the airfield. The project is eligible for 95% AIP reimbursement.

Issues / Status

The authorization to advertise for a construction contract was approved in February 2011. Bids are anticipated in May 2011.

WORK IN PROGRESS - Second Level Roadway Expansion Joint and Deck Repairs (L008A)

Project Description

This project provides for the repair and replacement of aging structural expansion joints on the second-level roadway in the Central Terminal Area (CTA). An expansion joint is an assembly designed to safely absorb the heat-induced expansion and contraction of adjoining concrete slabs. Specifically, this project will replace and repair joints and deck frames as recommended in the Caltrans June 2010 bridge inspection report. These repairs are summarized below.

- The removal and replacement of six expansion joints
- The repair of six to eight expansion joints
- The patching of concrete deck cracks and spalls, as needed
- The installation of methacrylate surface coating on 17 deck frames.

Issues / Status

The process of selecting a design consultant to prepare the plans and specifications is underway.

WORK IN PROGRESS - Coastal Dunes Improvement Project (L012A)

Project Description

This project proposes to restore the coastal dunes to a natural state by the removal of the existing pavements from the abandoned streets and sidewalks, backfilling the area with select soils and the planting and/or seeding with native coastal plants. This project is a requirement of the 2006 Stipulated Settlement Agreement. Item G of the Agreement calls for a project with a budget not exceeding \$3 million to:

- 1) Remove as much existing pavement as possible from abandoned streets and sidewalks, and;
- 2) Plant appropriate native vegetation in that area.

Issues / Status

Design is continuing and a horticulturist is being selected.

WORK IN PROGRESS - AOA Perimeter Fence Requirement - Phase 4 (L014A)

Project Description

This phase of the project will enhance the security of the Airport Operation Areas (AOA) perimeter fencing along Imperial Highway, Aviation and Century Boulevards by either replacing the existing fencing or by providing additional proactive security measures similar to those that are already in place along all other portions of the AOA at LAX. Completing this project, which is the last phase of a multi-phased security fencing program, will ensure that AOA fencing along the entire perimeter of LAX meets the same enhanced security standards.

Issues / Status

The authorization to advertise for a construction contract was approved in February 2011. Bids are due in May 2011.

WORK IN PROGRESS - VNY Soundproofing (S008A)

Project Description

The Van Nuys program consists of soundproofing 1,049 eligible dwelling units. Typical improvements include, but are not limited to, the replacement of windows, doors, fireplace doors and dampers, installation of attic baffles, insulation and ventilation/HVAC systems. The Program is strictly voluntary and free of charge to the homeowners.

At this time, 53-units are ready to be included in a construction contract. The owners of these units have signed and approved the scopes of work, installation agreements and have submitted proof of ownership. Completion of these units at VNY will complete the current VNY Soundproofing Program that started in 2000.

WORK IN PROGRESS - Fire Life Safety System Upgrades T1 & T2 (T006A)

Project Description

This project replaces the existing, outdated, noncompliant Fire Life Safety Systems in Terminals 1 and 2 with new systems that will bring T1 and T2 in full compliance with Los Angeles Fire Department (LAFD) requirements and current Fire and Building Codes, including the Americans with Disabilities Act's (ADA) visible fire alarm notification requirements. The work includes the upgrades of all fire alarms systems, strobes, enunciator panels, conduit and wiring. Complete tests will be performed at installation milestones to assure that the new system meets all current requirements. Completing this work will eliminate costly fire watch conditions and provide effective warning signals for passengers and users of the terminals in case of fire and other emergencies.

Issues / Status

The authorization to advertise for a construction contract was approved in December 2010.

PROGRAM MASTER SCHEDULE OVERVIEW

User's Guide - Schedule

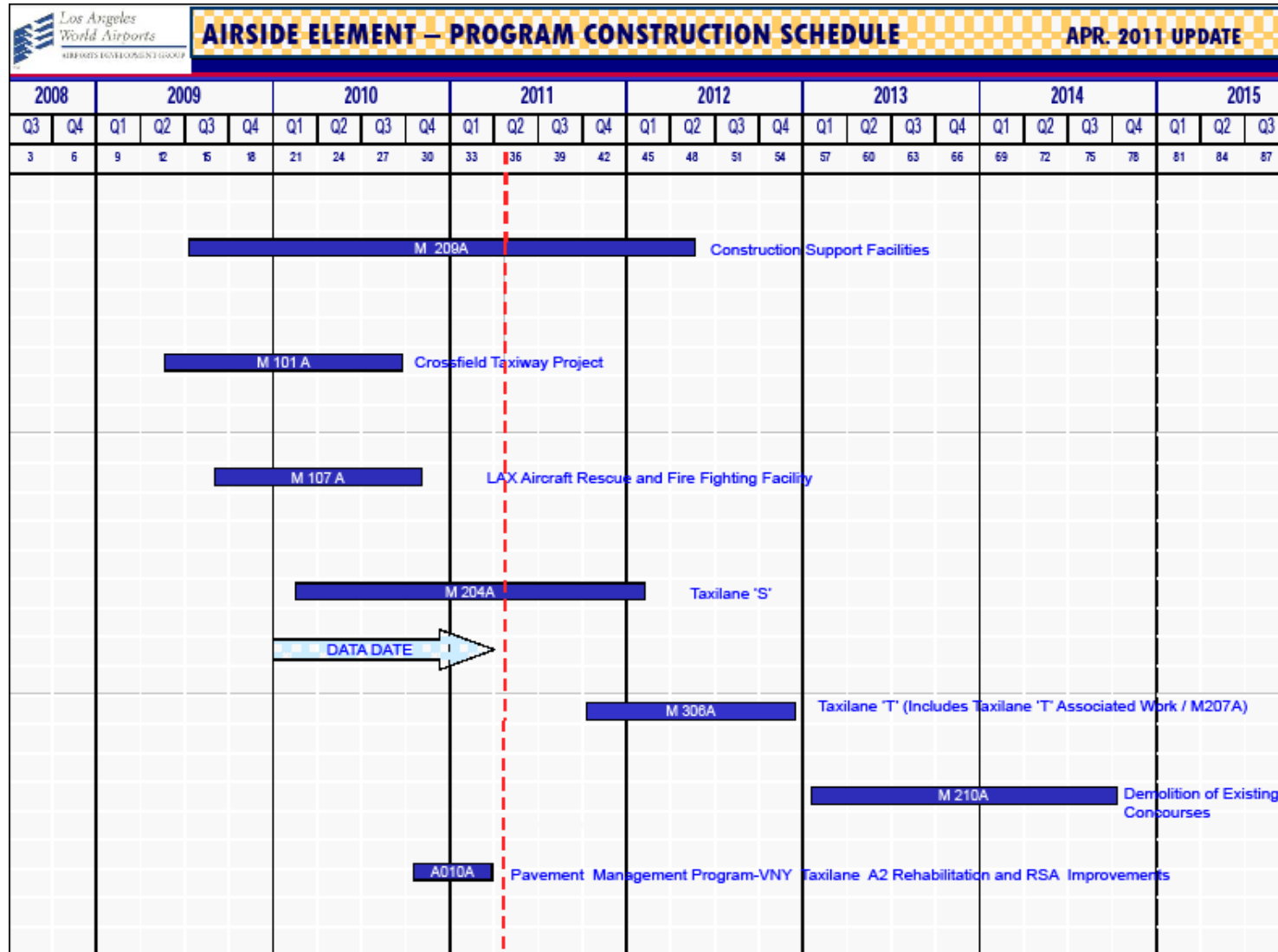
The information provided herein is designed to furnish users of the Airport Development Group (ADG) Program Construction Schedule Report with greater knowledge and a better understanding of the composition of the various components of the schedule report.

Data Date - Is a vertical line showing the current date of the report. Dates to the left side of the data date are known. Dates to the right side of the data date are projected.

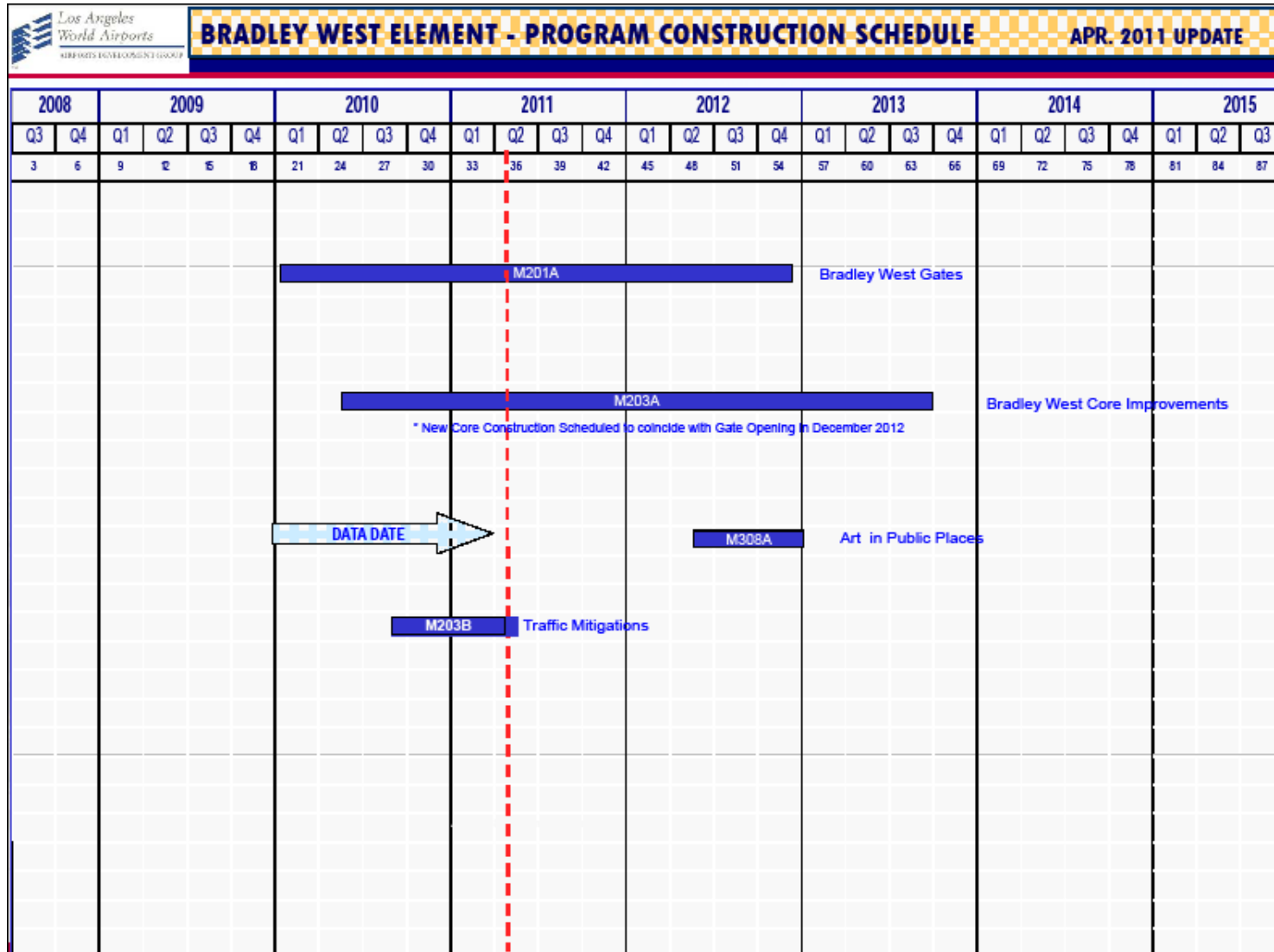
Project Schedule Bar - Is the blue bar which represents the construction phase for each project; with the exception of the Residential / Soundproofing projects which contains planning, design and construction phases.

Project Number - Is a unique identifier for each project that enables the reader to easily correlate scope, schedule and budget.

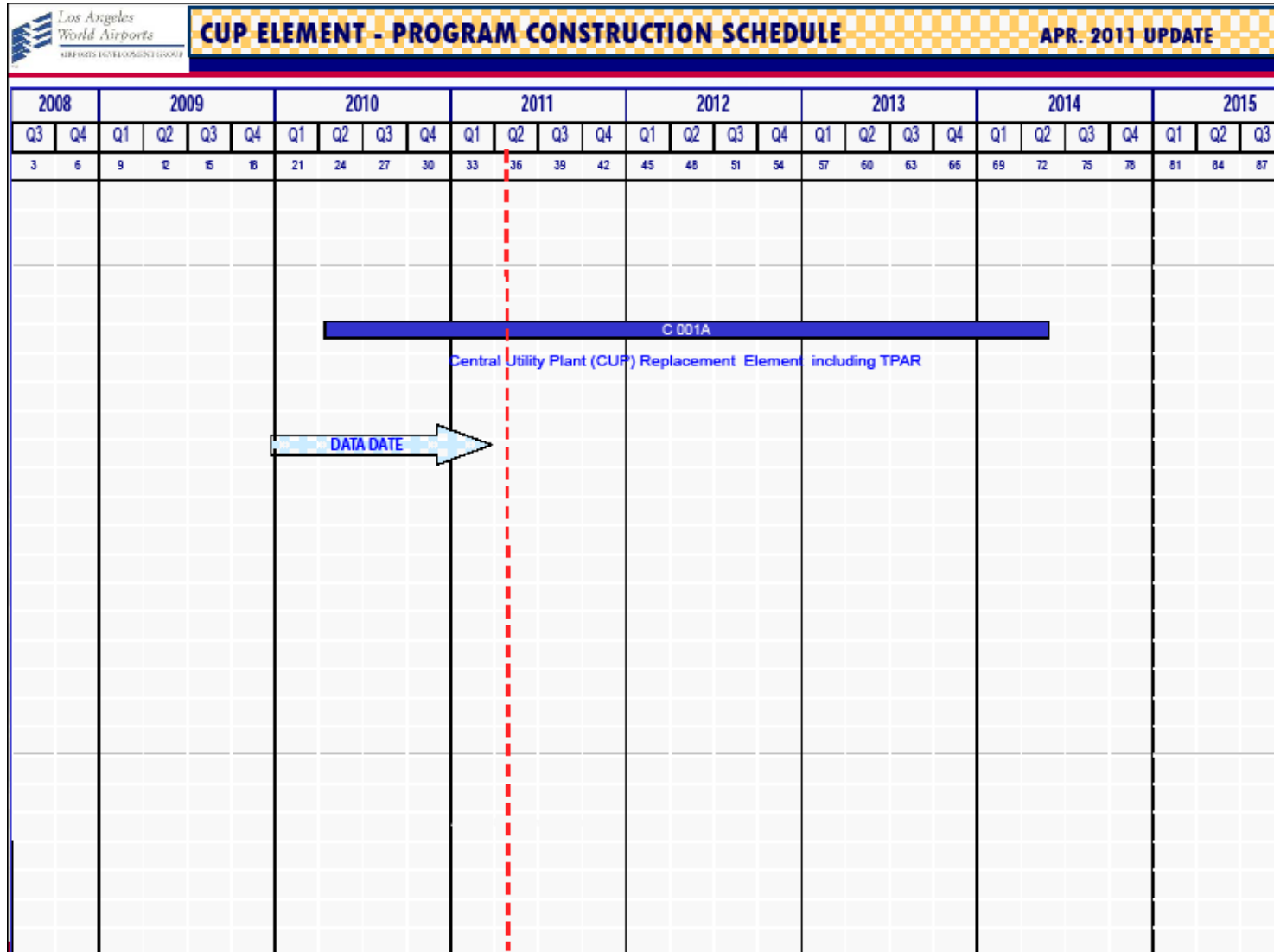
PROGRAM MASTER SCHEDULE - Continued




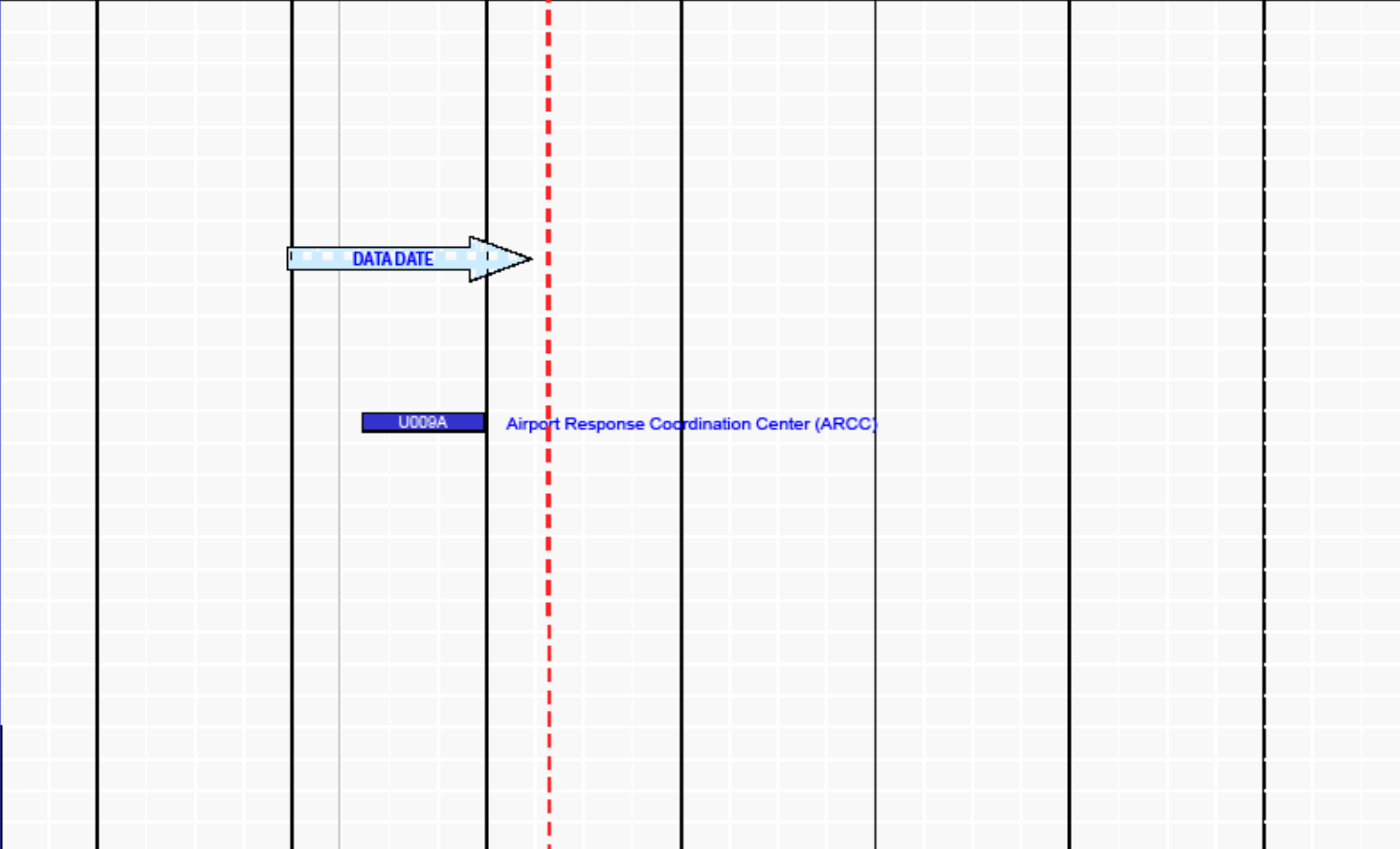
PROGRAM MASTER SCHEDULE - Continued



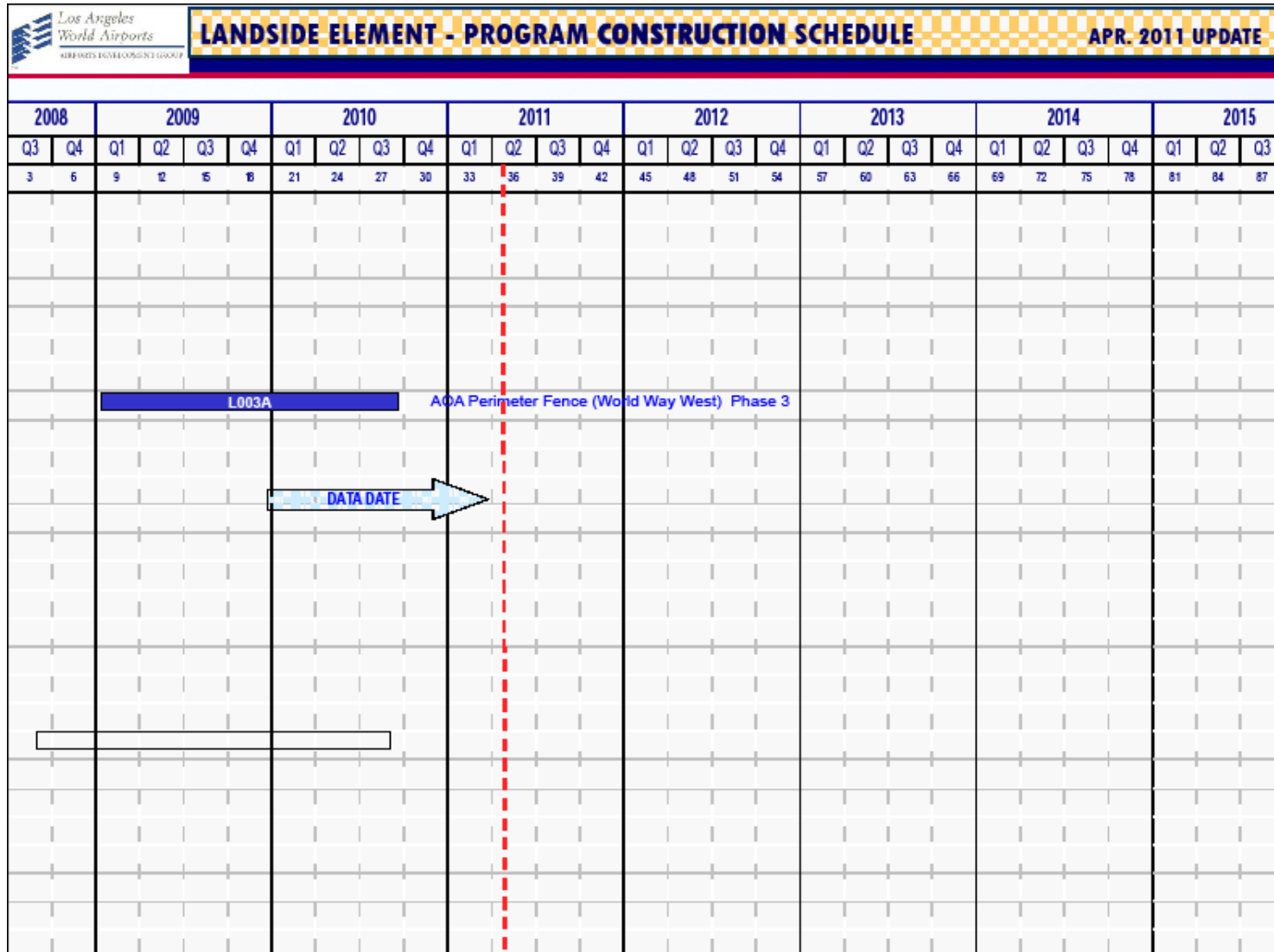
PROGRAM MASTER SCHEDULE - Continued



PROGRAM MASTER SCHEDULE - Continued

 UTILITIES & INFRASTRUCTURES ELEMENT - PROGRAM CONST. SCHEDULE - APR. 2011 UPDATE																												
2008		2009				2010				2011				2012				2013				2014				2015		
Q3	Q4	Q1	Q2	Q3	Q4	Q1	Q2	Q3	Q4	Q1	Q2	Q3	Q4	Q1	Q2	Q3	Q4	Q1	Q2	Q3	Q4	Q1	Q2	Q3	Q4	Q1	Q2	Q3
3	6	9	12	15	18	21	24	27	30	33	36	39	42	45	48	51	54	57	60	63	66	69	72	75	78	81	84	87
<div style="position: relative; width: 100%; height: 100%;">  <div style="position: absolute; top: 45%; left: 30%; transform: translate(-50%, -50%);"> <p>DATA DATE →</p> </div> <div style="position: absolute; top: 55%; left: 35%;"> <p>U009A Airport Response Coordination Center (ARCC)</p> </div> </div>																												

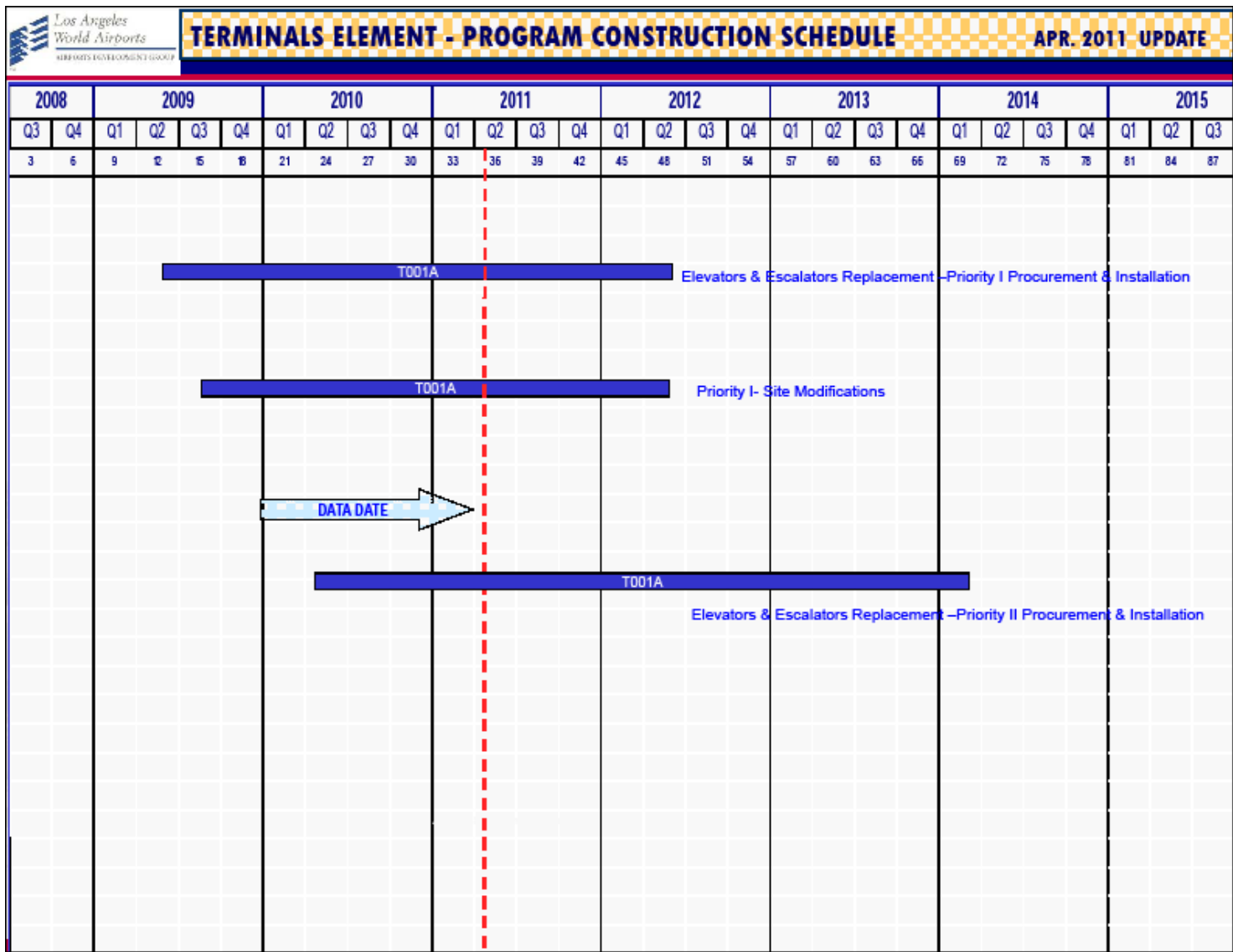
PROGRAM MASTER SCHEDULE - Continued



PROGRAM MASTER SCHEDULE - Continued

Los Angeles World Airports AIRPORTS DEVELOPMENT GROUP		RESIDENTIAL/ SOUNDPROOFING ELEMENT- PROGRAM SCHEDULE																												APR. 2011 UPDATE		
2008		2009				2010				2011				2012				2013				2014				2015						
Q3	Q4	Q1	Q2	Q3	Q4	Q1	Q2	Q3	Q4	Q1	Q2	Q3	Q4	Q1	Q2	Q3	Q4	Q1	Q2	Q3	Q4	Q1	Q2	Q3	Q4	Q1	Q2	Q3				
3	6	9	12	15	18	21	24	27	30	33	36	39	42	45	48	51	54	57	60	63	66	69	72	75	78	81	84	87				
S002A											Noise Mitigation / Soundproofing (City of LA)																					
S004A										Aircraft & Noise Monitoring Management System (ANMMS) - LAX																						
DATA DATE																																

PROGRAM MASTER SCHEDULE - Continued



User's Guide - Budget Reports

The information provided herein is designed to furnish users of the Airport Development Group (ADG) Budget Reports with greater knowledge and a better understanding of the composition of the various components of the budget report.

Baseline Budget - Is the estimated cost of the project as it was reported in the November 2009 report with the exception of the Crossfield Taxiway project which is from the February 2009 Operating Statement (OS) budget report.

Current Budget - Is the estimated cost of the project as it was planned plus or minus any processed revisions.

Committed to Date - Is the total contractual obligation to date for the project, e.g. awarded design contracts, awarded construction contracts, authorized task orders, etc.

Incurred to Date - Is the total of invoices received to date for the project.

Estimate at Completion (EAC) - Is the latest estimate of the total cost of the project.

Variance - Is the difference between Budget minus Estimate at Completion (EAC).

Percent (%) Incurred - Calculated as Incurred to Date divided by Estimate at Completion, this column provides a financial-oriented progress indicator.

Percent (%) Contingency Used: Calculated as the change in Contingency divided by Original Contingency, this column provides an indicator for project contingency-usage.

PROGRAM COST SUMMARY REPORT

as of 3/31/2011

(dollars in thousands)								
Description	Baseline Budget	Current Budget	Committed to Date	Incurred to Date	Estimate at Completion	Variance (Budget-EAC)	% Incurred	% Cont Used
Airside Element	650,660	651,059	341,201	241,628	614,571	36,487	39%	57%
Bradley West Element	1,545,020	1,547,803	1,115,010	392,315	1,443,225	104,578	27%	0%
CUP Replacement Element	438,085	438,085	337,102	60,455	383,333	54,751	16%	0%
Utilities & Infrastructure Element	8,175	13,914	13,247	11,443	14,441	(526)	79%	95%
Landside Element	17,162	17,162	15,017	14,383	14,497	2,665	99%	20%
Residential/Soundproofing Element	183,233	163,233	151,191	144,677	163,233	0	89%	0%
Terminal Element	270,000	270,000	97,500	45,398	206,252	63,748	22%	9%
Subtotal	3,112,335	3,101,256	2,070,268	910,299	2,839,552	261,703	32%	14%
Unallocated Contingency	N/A	286,896	0	0	N/A	N/A	N/A	N/A
Subtotal	N/A	3,388,152	2,070,268	910,299	N/A	N/A	N/A	N/A
Work in Progress	N/A	67,594	6,754	850	N/A	N/A	N/A	N/A
Program Total	N/A	3,455,746	2,077,022	911,149	N/A	N/A	N/A	N/A

Notes:

1. The current budget and estimate at completion excludes escalation

AIRSIDE ELEMENT BUDGET REPORT as of 3/31/2011

(dollars in thousands)									
Project #	Description	Baseline Budget	Current Budget	Committed to Date	Incurred to Date	Estimate at Completion	Variance (Budget-EAC)	% Incurred	% Cont Used
M209A	Construction Support Facilities	14,790	8,425	7,106	6,105	7,537	888	81%	37%
M101A	Crossfield Taxiway Project	177,760	145,678	139,705	131,931	142,695	2,983	92%	95%
M107A	LAX Aircraft Rescue and Fire Fighting Facility	14,190	14,190	13,886	13,687	14,157	33	97%	98%
M205A	Bradley West - Aprons	111,870	111,870	25,148	13,544	103,520	8,350	13%	1%
M204A	Taxilane 'S'	174,980	154,118	136,949	64,426	153,108	1,009	42%	65%
M306A	Taxilane 'T'	96,500	156,208	11,754	6,347	144,898	11,310	4%	0%
M210A	Demolition of Existing Concourses	52,600	52,600	1,770	1,635	43,604	8,996	4%	0%
A010A	Pavement Management Program - VNY Taxilane A2 Rehabilitation and RSA Improvements	7,970	7,970	4,883	3,953	5,052	2,918	78%	0%
Airside Element Total		650,660	651,059	341,201	241,628	614,571	36,487	39%	57%

Notes:

1. The current budget and estimate at completion excludes escalation

BRADLEY WEST ELEMENT BUDGET REPORT as of 3/31/2011

(dollars in thousands)									
Project #	Description	Baseline Budget	Current Budget	Committed to Date	Incurred to Date	Estimate at Completion	Variance (Budget-EAC)	% Incurred	% Cont Used
M201A	Bradley West Gates	742,954	744,879	631,354	246,691	732,538	12,341	34%	0%
M203A	Bradley West Core Improvements	793,164	795,089	476,178	144,030	702,999	92,090	20%	0%
M203B	Construction Traffic Mitigations	3,542	2,475	2,118	1,594	2,328	147	68%	34%
M308A	Art In Public Places	5,360	5,360	5,360	0	5,360	0	0%	0%
Bradley West Element Total		1,545,020	1,547,803	1,115,010	392,315	1,443,225	104,578	27%	0%

Notes:

1. The current budget and estimate at completion excludes escalation

CUP REPLACEMENT ELEMENT BUDGET REPORT

as of 3/31/2011

(dollars in thousands)									
Project #	Description	Baseline Budget	Current Budget	Committed to Date	Incurred to Date	Estimate at Completion	Variance (Budget-EAC)	% Incurred	% Cont Used
C001A	Central Utility Plant	438,085	438,085	337,102	60,455	383,333	54,751	16%	0%
CUP Replacement Element Total		438,085	438,085	337,102	60,455	383,333	54,751	16%	0%

Notes:

1. The current budget and estimate at completion excludes escalation

UTILITIES & INFRASTRUCTURE ELEMENT BUDGET REPORT

as of 3/31/2011

(dollars in thousands)									
Project #	Description	Baseline Budget	Current Budget	Committed to Date	Incurred to Date	Estimate at Completion	Variance (Budget-EAC)	% Incurred	% Cont Used
U009A	Airport Response Coordination Center (ARCC)	8,175	13,914	13,247	11,443	14,441	(526)	79%	95%
Utilities & Infrastructure Element Total		8,175	13,914	13,247	11,443	14,441	(526)	79%	95%

Notes:

1. The current budget and estimate at completion excludes escalation

LANDSIDE ELEMENT BUDGET REPORT

as of 3/31/2011

(dollars in thousands)									
Project #	Description	Baseline Budget	Current Budget	Committed to Date	Incurred to Date	Estimate at Completion	Variance (Budget-EAC)	% Incurred	% Cont Used
L003A	AOA Perimeter Fence (World Way West) Phase 3	17,162	17,162	15,017	14,383	14,497	2,665	99%	20%
Landside Element Total		17,162	17,162	15,017	14,383	14,497	2,665	99%	20%

Notes:

1. The current budget and estimate at completion excludes escalation

RESIDENTIAL/SOUNDPROOFING ELEMENT BUDGET REPORT

as of 3/31/2011

(dollars in thousands)									
Project #	Description	Baseline Budget	Current Budget	Committed to Date	Incurred to Date	Estimate at Completion	Variance (Budget-EAC)	% Incurred	% Cont Used
S004A	Aircraft & Noise Monitoring & Management System (ANMMS)-LAX	3,233	3,233	3,233	3,021	3,233	0	93%	0%
S002A	Noise Mitigation/Soundproofing (City of LA)	180,000	160,000	147,958	141,656	160,000	0	89%	0%
Residential/Soundproofing Element Total		183,233	163,233	151,191	144,677	163,233	0	89%	0%

Notes:

1. The current budget and estimate at completion excludes escalation

TERMINAL ELEMENT BUDGET REPORT

as of 3/31/2011

(dollars in thousands)									
Project #	Description	Baseline Budget	Current Budget	Committed to Date	Incurred to Date	Estimate at Completion	Variance (Budget-EAC)	% Incurred	% Cont Used
T001A	Elevators and Escalators Replacement	270,000	270,000	97,500	45,398	206,252	63,748	22%	9%
Terminal Element Total		270,000	270,000	97,500	45,398	206,252	63,748	22%	9%

Notes:

1. The current budget and estimate at completion excludes escalation

WORK IN PROGRESS BUDGET REPORT

as of 3/31/2011

(dollars in thousands)									
Project #	Description	Baseline Budget	Current Budget	Committed to Date	Incurred to Date	Estimate at Completion	Variance (Budget-EAC)	% Incurred	% Cont Used
A010B	Pavement Management Program - VNY Taxiway A2 Rehabilitation - Phase 2	N/A	2,290	0	0	N/A	N/A	N/A	N/A
L008A	Second Level Roadway Expansion Joint and Deck Repairs	N/A	18,900	0	0	N/A	N/A	N/A	N/A
L012A	Coastal Dunes Improvement Project	N/A	3,000	0	0	N/A	N/A	N/A	N/A
L014A	AOA Perimeter Fence Requirement - Phase 4	N/A	30,000	0	0	N/A	N/A	N/A	N/A
S008A	VNY Soundproofing	N/A	1,350	0	0	N/A	N/A	N/A	N/A
T006A	Fire Life Safety System Upgrades T1 & T2	N/A	5,300	0	0	N/A	N/A	N/A	N/A
A006B	Interim Taxiway Safety Improvement Project (ITSIP)	N/A	6,754	6,754	850	N/A	N/A	N/A	N/A
Work in Progress Element Total		N/A	67,594	6,754	850	N/A	N/A	N/A	N/A

Notes:

1. The current budget and estimate at completion excludes escalation

PROGRAM CASH FLOW OVERVIEW

User's Guide - Cash Flow

The information provided herein is designed to furnish users of the Airport Development Group (ADG) Cash Flow Reports with greater knowledge and a better understanding of the cash flow report.

Monthly Plan - Is the estimated cost of the work anticipated for a given month.

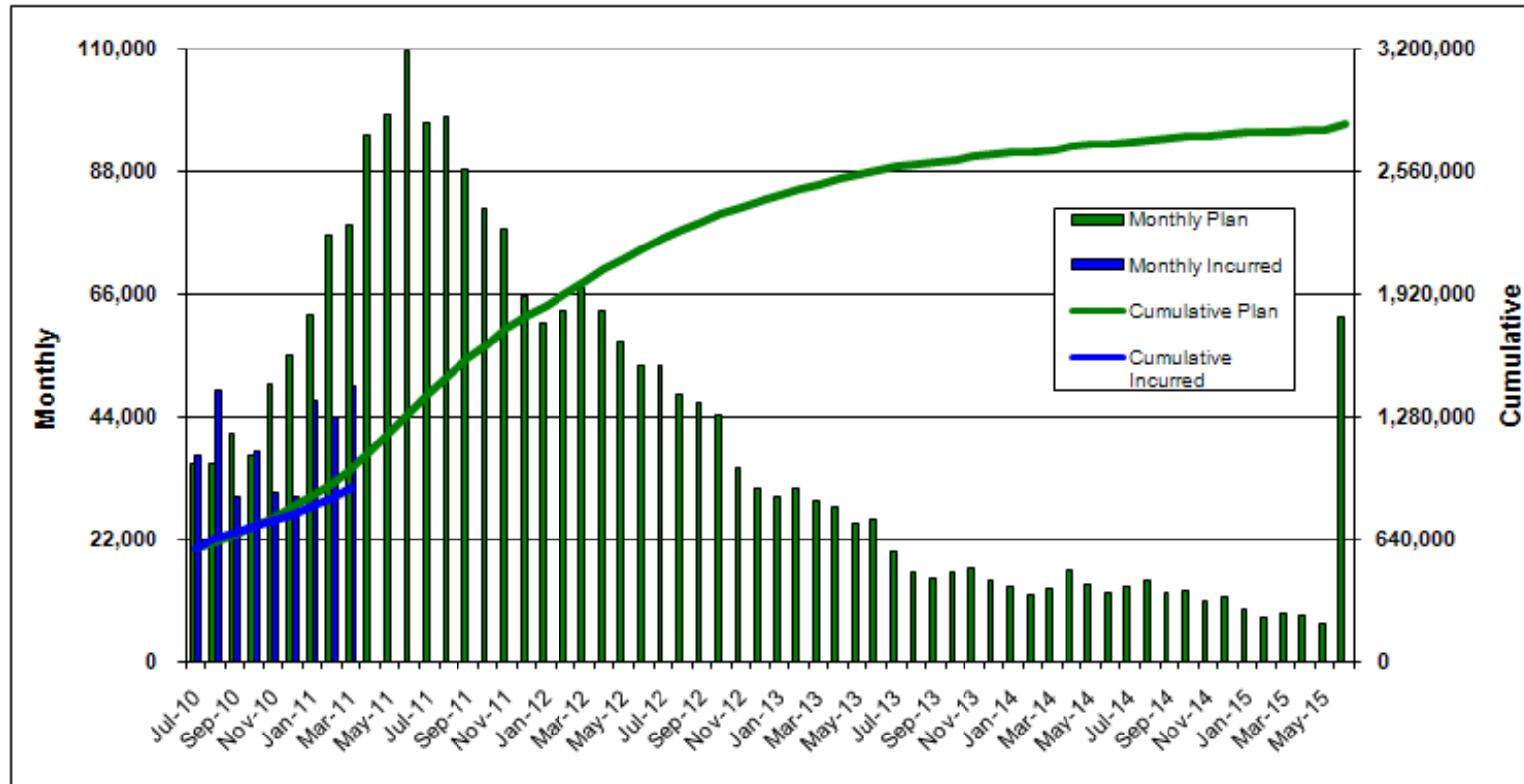
Monthly Incurred - Is the cost of the work actually completed and invoiced for a given month.

Cumulative Plan - Represents the summation of the Monthly Plan amounts, to a given point in time, and provides the user with an overall forecast.

Cumulative Incurred - Represents the summation of the Monthly Incurred amounts, to a given point in time, and provides the user with the total amount invoiced.

PROGRAM CASH FLOW

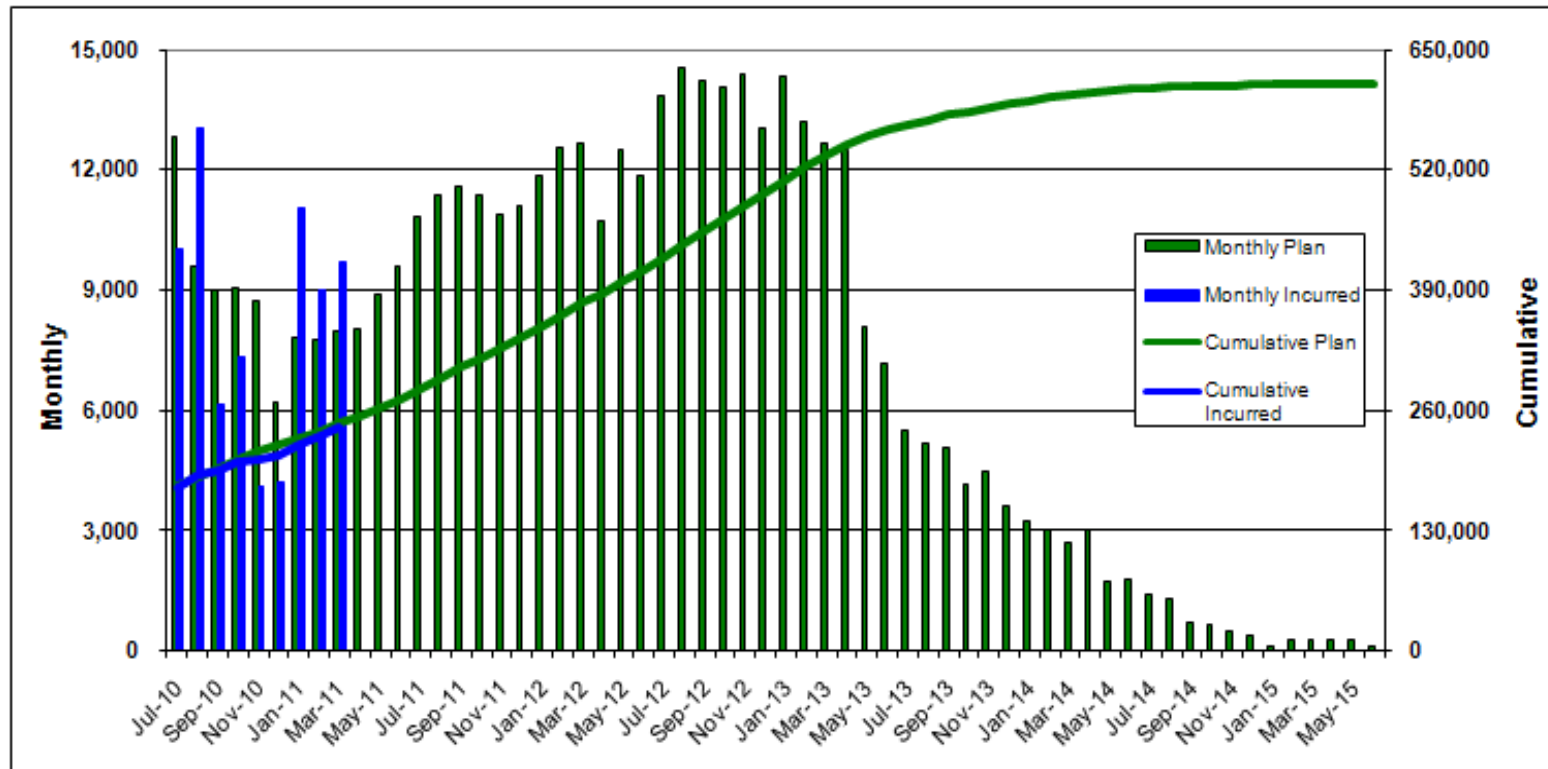
as of 3/31/2011



- Notes:
1. Unallocated Contingency is not included.
 2. Escalation is not included.

AIRSIDE ELEMENT CASH FLOW

as of 3/31/2011

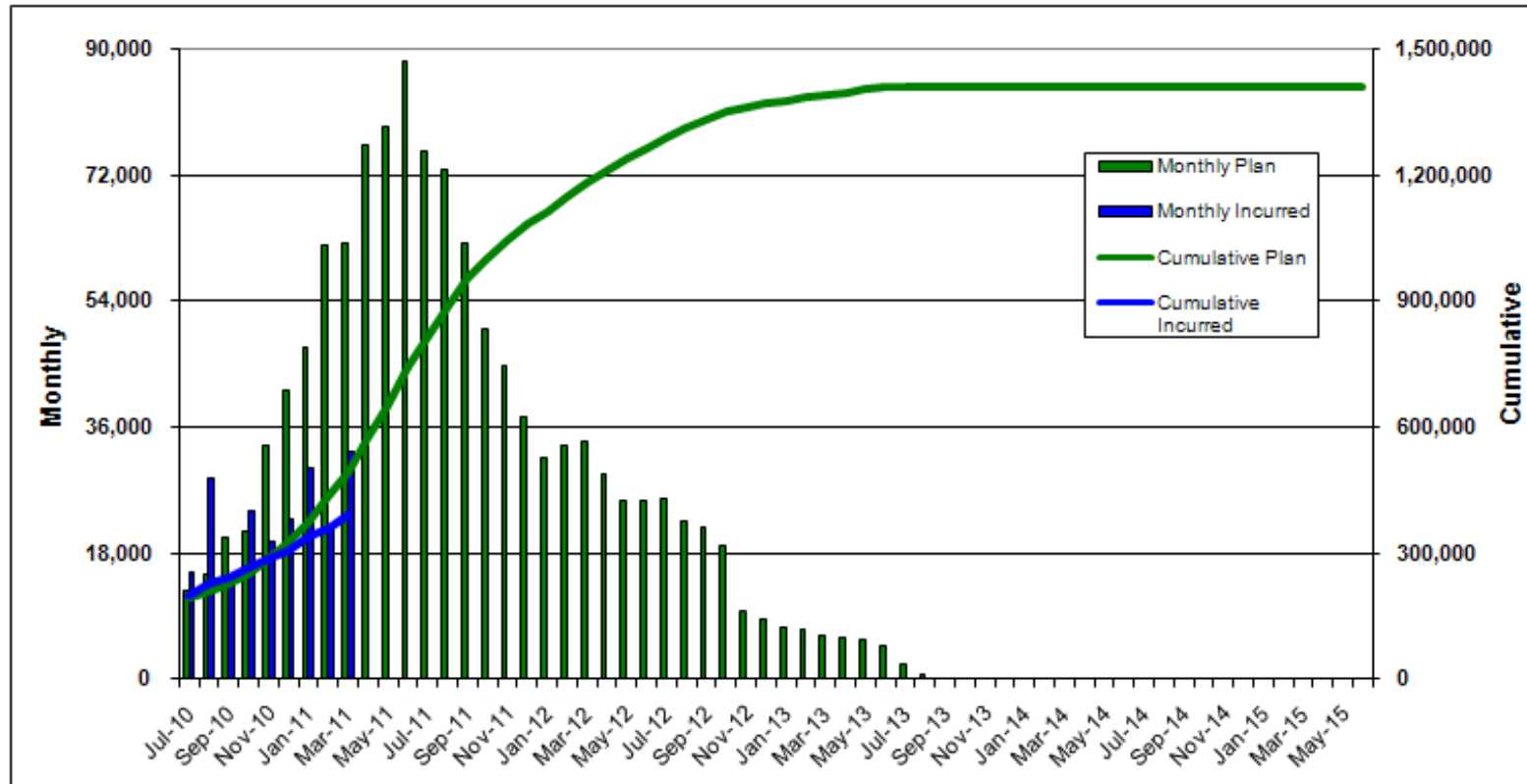


Notes:

1. Unallocated Contingency is not included.
2. Escalation is not included.

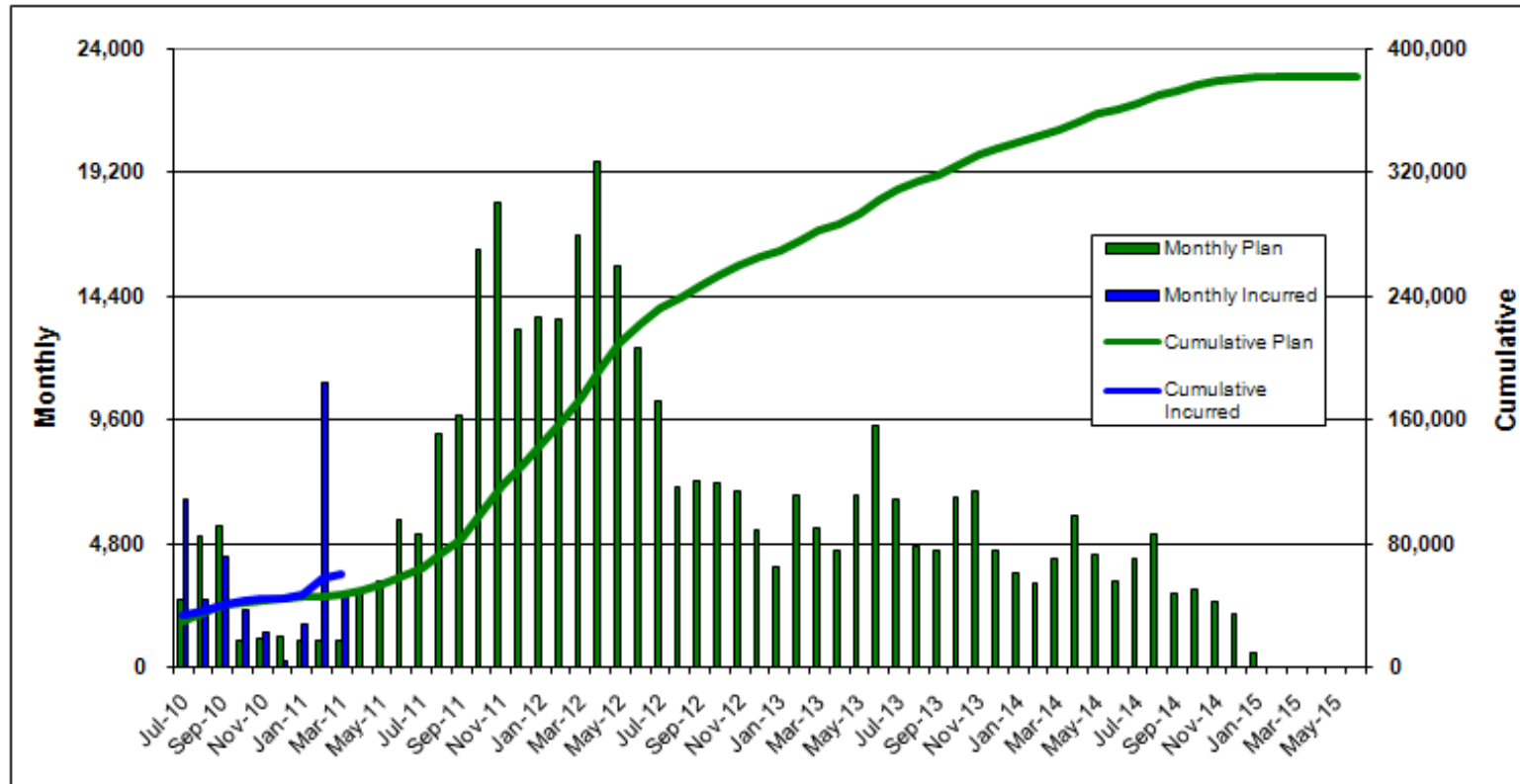
BRADLEY WEST ELEMENT CASH FLOW

as of 3/31/2011



- Notes:
1. Unallocated Contingency is not included.
 2. Escalation is not included.

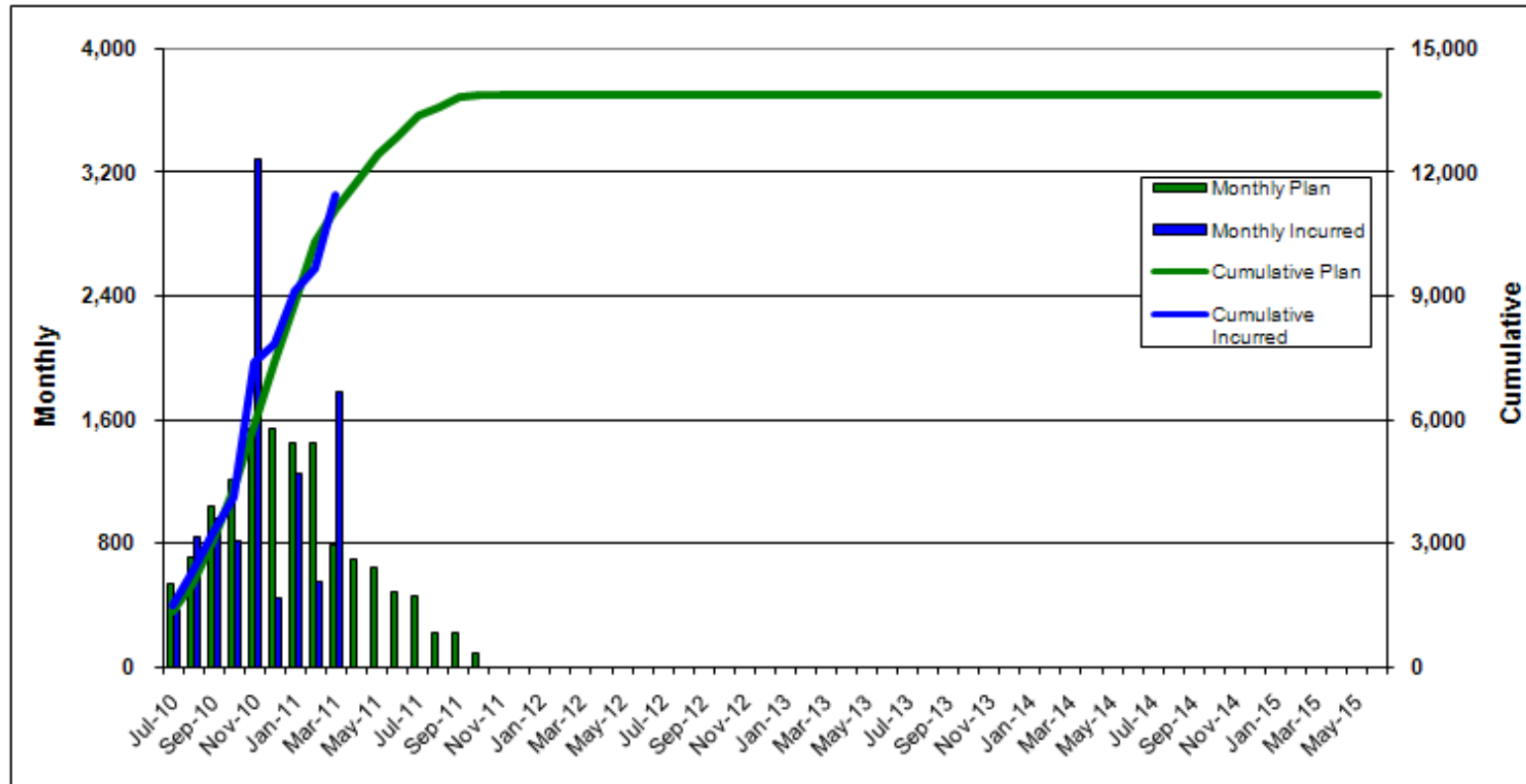
CUP REPLACEMENT CASH FLOW as of 3/31/2011



- Notes:
1. Unallocated Contingency is not included.
 2. Escalation is not included.

UTILITIES & INFRASTRUCTURE ELEMENT CASH FLOW

as of 3/31/2011

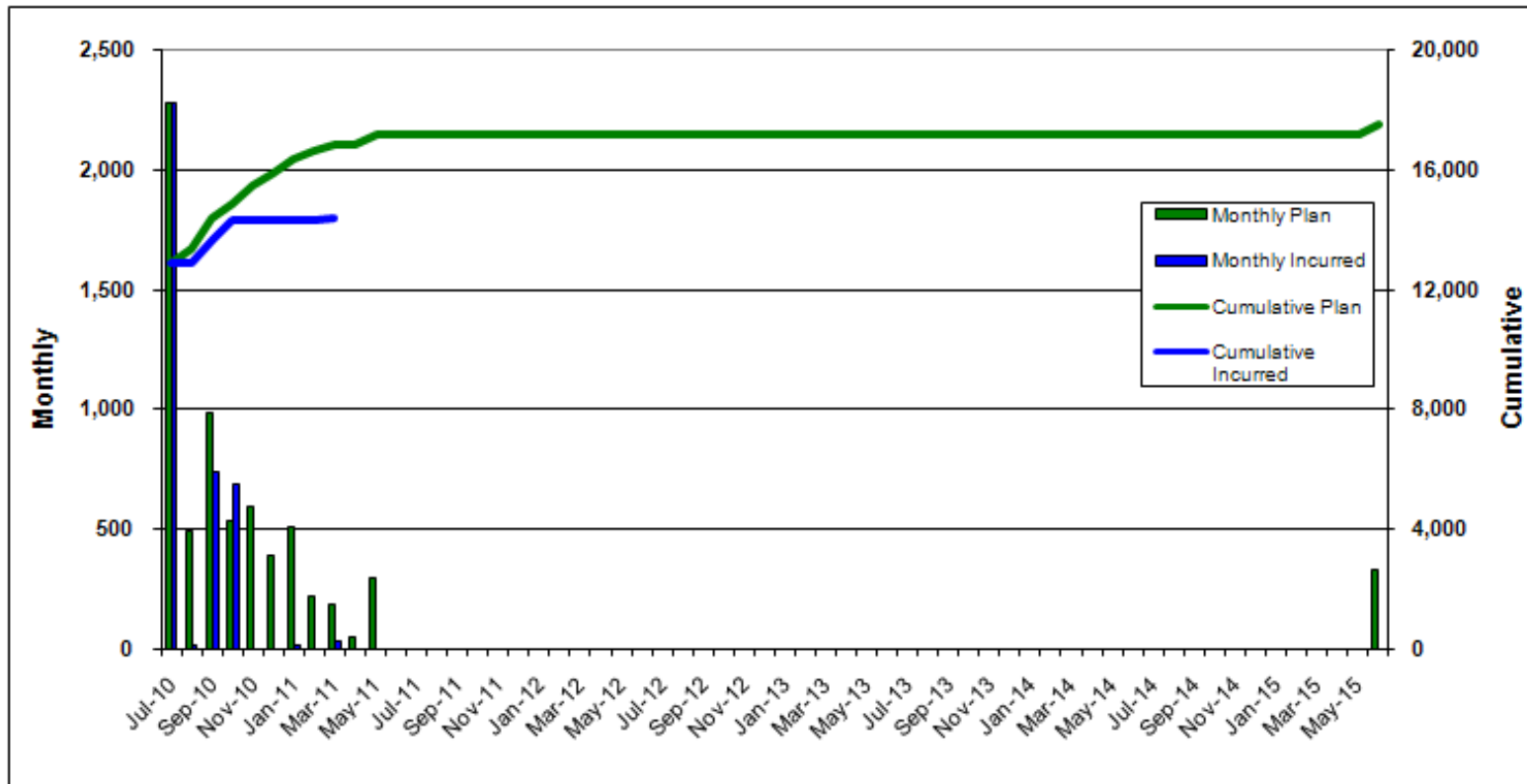


Notes:

1. Unallocated Contingency is not included.
2. Escalation is not included.

LANDSIDE ELEMENT CASH FLOW

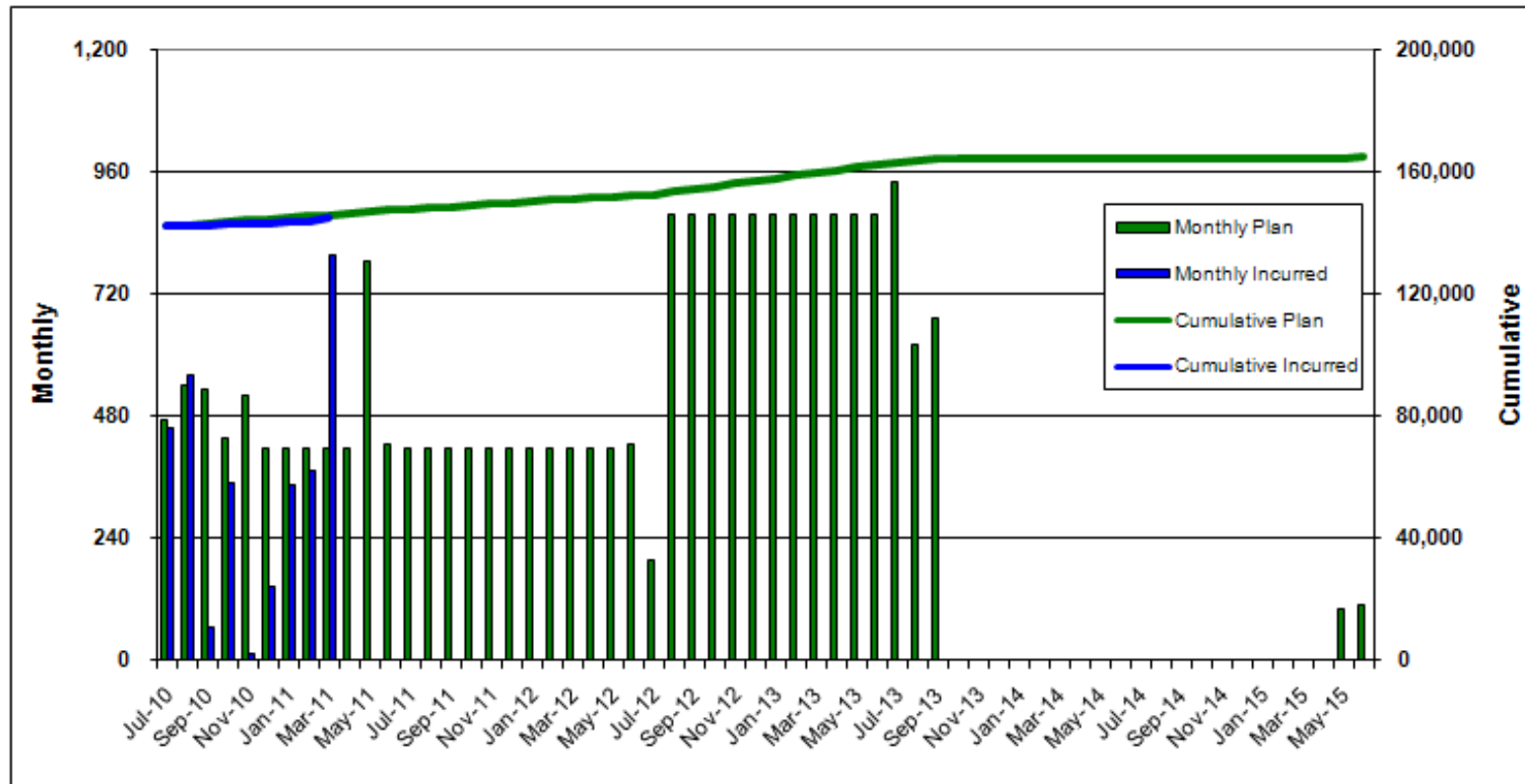
as of 3/31/2011



- Notes:
1. Unallocated Contingency is not included.
 2. Escalation is not included.

RESIDENTIAL/SOUNDPROOFING ELEMENT CASH FLOW

as of 3/31/2011

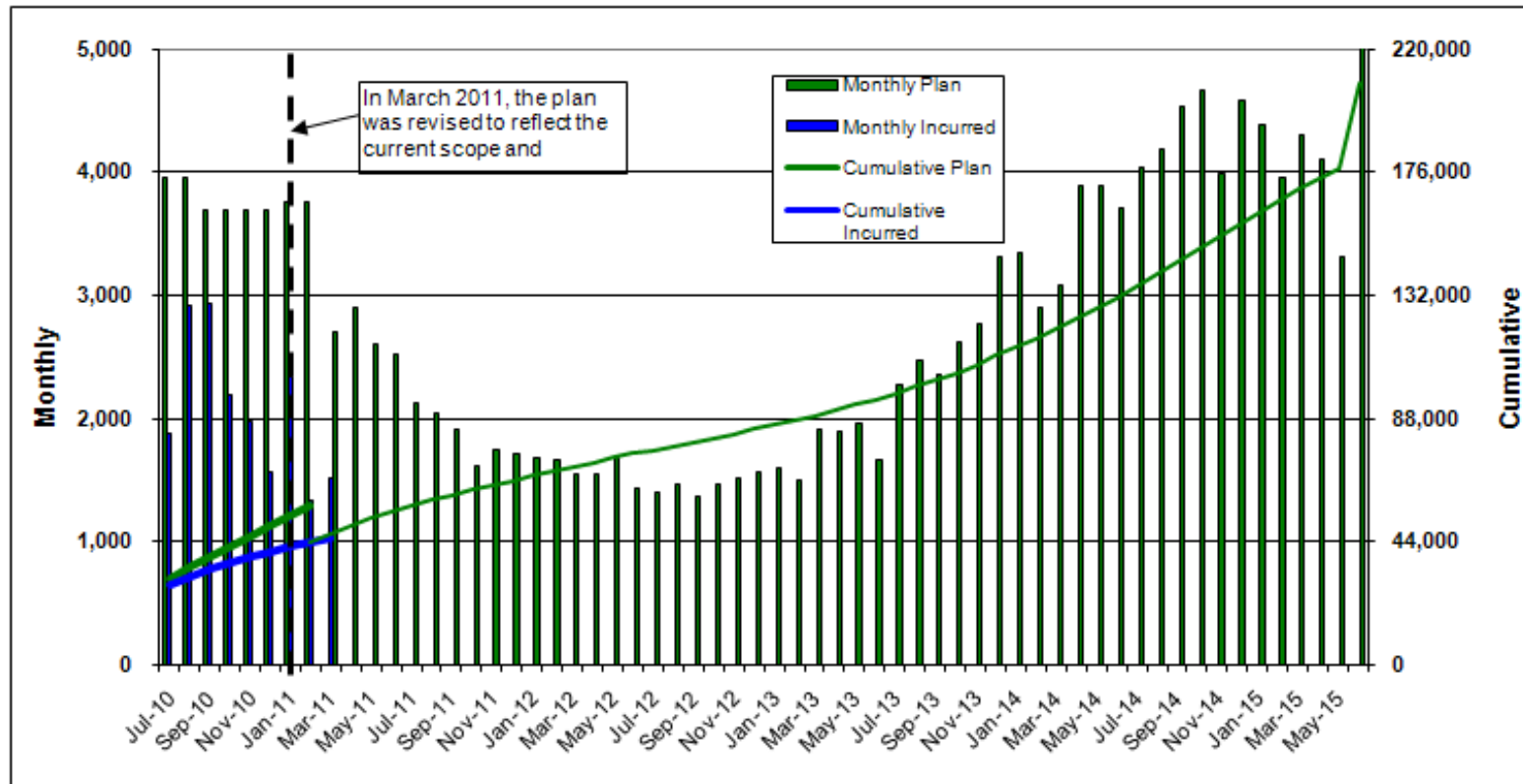


Notes:

1. Unallocated Contingency is not included.
2. Escalation is not included.

TERMINALS ELEMENT CASH FLOW

as of 3/31/2011



Notes:

1. Unallocated Contingency is not included.
2. Escalation is not included.

User's Guide - Change Order

The information provided herein is designed to furnish users of the Airport Development Group (ADG) Change Order Reports with greater knowledge and a better understanding of the composition of the various components of the change order report.

Change Orders - Process by which an adjustment is made to the total contract capacity.

CGMP Revision - Process by which the value of a CGMP is adjusted within the original total contract capacity. This process is employed by the Bradley West Element - Gates and Core projects in the administration of the Construction Management at Risk (CMAR) contracts.

CHANGE ORDERS as of 4/30/2011

Element	Project	Contract	Change Order No	< \$150K	\$150K - \$1Mil	> \$1Mil	Notes
Airside Element							
A010A - PAVEMENT MANAGEMENT PROGRAM - VNY TAXILANE A2 REHABILITATION AND RSA IMPROVEMENTS							
	DA-4498		0001	(\$17,311)			Modifications to Pavement Markings and Sign Panels, Non-Compensable Time Extension, Sign 33-A Reposition, 10KW Constant Current Regulator, HDPE Pipe Substitution, Re-Stake RSA at Raxiway R, Investigate, Remove and Reinstall Unknown Conduit and Circuit, LED Bi-directional Centerline Light Fixtures, Sawcut and Remove Unknown Concrete Structure in Work Area 5, Remove Existing Catch Basin
M101A - CROSSFIELD TAXIWAY PROJECT							
	DA-4331		0051	\$95,731			Service Road Bridge Plans, Junction Structure 1-1 Modifications, Investigation of FAA Fiber #25
	DA-4331		0052	\$116,326			Phase 5 Demo Limits, RON Area Pavement Modifications
	DA-4331		0053	\$141,905			Repair Damaged Temporary Standing Reds, Jensen Aircraft Rated MH & HH Modifications, LADWP Access, RFI #79 Added Rebar for WWW Light Poles, Electrical Ductbank Conflicts, Pump Station Permit Changes
	DA-4331		0054	\$143,706			RON Additional LADBS Requirements, Washrack Maintenance, Washrack UL Certification
	DA-4331		0055	\$89,687			Transite Pipe Abatement, Additional Flushing of Jet Fuel Lines
	DA-4331		0056	\$95,949			Irregular Sized Hand Pours/ Added Concrete, Remove PCCP with Wire Mesh, Core and Patch (E) Posts Burned Off, ARFF Driveway 12-inch PCCP
	DA-4331		0057	\$96,757			Crushing Operation Title V Requirements
	DA-4331		0058	\$51,528			Additional Details for Demo at Sky Chef Building, Additional Demo for Access to ARFF Construction Site, Phase 3 Catch Basin Adjustment, Additional V-Ditch in Phase 2A, Site Changes Phase 5, Raise MH 6-1A & JS 6-0B
M204A - TAXILANE 'S'							
	DA-4398		0018	\$142,574			Storm Water Filter Structure Modifications, Storm Drain Line 20 and 21 Revisions
	DA-4398		0019	\$101,101			Taxiway T Centerline and Signage Revisions, Phase 2 Temporary Service Road C, Service Road E Detour, Storm Drain Line 6 Modifications

CHANGE ORDERS - Continued as of 4/30/2011

Element	Project	Contract	Change Order No	< \$150K	\$150K - \$1Mil	> \$1Mil	Notes
Bradley West Element							
DA-4337 - BRADLEY WEST GATES (DA-4337)							
	DA-4337/CGMP01		0002	\$8,464			Safway Services, Field Services- CGMP01, CMAR Fee, City Tax
	DA-4337/CGMP02		0068	\$13,314			Griffith - Utilities - IWBT, CMAR Fee, City Tax
	DA-4337/CGMP02		0069	\$3,820			All Area Plumbing - IWBT, City Tax, CMAR Fee
	DA-4337/CGMP02		0070	\$28,528			CD 0140 IWBT East Egress H027R1, CMAR Fee, City Tax, CD 0215 IWBT Payphone and Furr Out Wall
	DA-4337/CGMP02		0071	\$49,658			IWBT RFI 2028 Condensate Line Changes, CD 0037 IWBT Underground Plumbing Changes, IWBT Drinking Fountain Changes, CMAR Fee, City Tax
	DA-4337/CGMP02		0072	\$12,057			IWBT Temp Loading Dock Staging Area, Painting of the Loading Dock Deck and Ramp, CMAR Fee, City Tax
	DA-4337/CGMP02		0073	\$7,762			Sump and Sewage Ejector Pit Depths, IWBT Connector Separation Wall, CMAR Fee, City Tax
	DA-4337/CGMP02		0074	\$68,081			CD 0060 Interim Temp Loading Dock at IWBT, IWBT IFC Plumbing Drawings and Specs., CMAR Fee, City Tax
	DA-4337/CGMP02		0075	(\$37,395)			IWBT Quality Production Services OCIP Credit, IWBT Largo OCIP Credit, CMAR Fee, City Tax
	DA-4337/CGMP02		0076	\$22,385			All Area Plumbing - IWBT, CMAR Fee, City Tax
	DA-4337/CGMP02		0077	\$10,633			Herrick Steel, CMAR Fee, City Tax
	DA-4337/CGMP02		0078	\$2,875			CMAR Fee, City Tax
	DA-4337/CGMP02		0079	(\$125)			CMAR Fee, City Tax
	DA-4337/CGMP02		0080	(\$64,237)			IWBT Progressive Flooring OCIP Credit, IWBT Paramount Tile OCIP Credit, IWBT RFI 1034 Defibrillator Cabinets, Fuel Line Removals Not Performed by ARB within the IWBT Limits, CMAR Fee, City Tax
	DA-4337/CGMP02		0082		\$263,143		Conflicts with Chilled and Hot Water Piping at Gate 119, IWBT Sasco OCIP Credit - Electrical, Modifications to AOA Fence (CCP1), CMAR Fee, City Tax
	DA-4337/CGMP02		0083	(\$1,558)			IWBT RFI 1411 Duct Color Change Cost - Key Air, CMAR Fee, City Tax
	DA-4337/CGMP02		0084	\$62,477			Additional Curb Cuts at IWBT Loading Platform, IWBT Signage - Re-Face Existing, IWBT East Egress H027R1 - Concrete, CMAR Fee, City Tax, IWBT Bulletin 27A Emergency Egress - Doors
	DA-4337/CGMP02		0086		\$316,611		Portland Cement Concrete (PCC) Restoration at Gate 106 and 119 (CCP1), CMAR Fee, City Tax
	DA-4337/CGMP02		0087	\$4,507			IWBT Miscellaneous Fire Inspector Items, Re-design of Connector - Concrete, Abandonment of existing West egress doors (Electrical demolition at Gate 122 only), CMAR Fee, City Tax
	DA-4337/CGMP03		0009	\$41,345			Griffith - Excavation CCP/2, CMAR Fee, City Tax

Bradley West Element

DA-4337 - BRADLEY WEST GATES (DA-4337)

DA-4337/CGMP03	0010		\$175,972	CD 0021 Revisions to Domestic Water and Fire Water Systems (CCP2), CMAR Fee, City Tax
DA-4337/CGMP04	0039	\$75,731		Changes at L3 and L4 Bathrooms, JAMA Structural Observation Report, CMAR Fee, City Tax
DA-4337/CGMP04	0040	\$56,712		RFI 3273 - Added Trim Bar at Slab on Grade Diamonds, RFI 1826 Knockout Panel at A between N6 - N7, CMAR Fee, City Tax
DA-4337/CGMP04	0041	\$7,015		JT Wimsatt - Concrete BP-05, CMAR Fee, City Tax
DA-4337/CGMP04	0042	\$30,808		JAMA Structural Observation Report, MEP Sleeves and Blockouts in walls N5, N6 and N7, Blockout for Fire Protection, CMAR Fee, City Tax
DA-4337/CGMP04	0043	\$11,264		JT Wimsatt - Concrete, CMAR Fee, City Tax
DA-4337/CGMP05	0012		\$618,266	Computer Simulation of Elevator Controller Operation, Elevator Interior Finishes revisions per shop drawing review, Deletion of Moving Walk Factory Test Requirement, CMAR Fee, City Tax
DA-4337/CGMP06	0007		\$401,933	System Restraint System - Crown Corr, CMAR Fee, City Tax
DA-4337/CGMP06	0008		\$538,107	Troyer Contracting - PVC Roof - BWG, CMAR Fee, City Tax
DA-4337/CGMP07	0016	\$435		Cosco - Fire Protection - BWG, CMAR Fee, City Tax
DA-4337/CGMP07	0017	\$18,239		BWG RFI 2189 - Sizes of Floor Sinks and Floor Drains, CMAR Fee, City Tax
DA-4337/CGMP07	0018	\$12,640		Binnacle Rated Enclosures - HVAC, Binnacle Rated Enclosures - Plumbing, CMAR Fee, City Tax
DA-4337/CGMP07	0019	\$25,558		South Concourse Tenant Plumbing Stubs, CMAR Fee, City Tax
DA-4337/CGMP08	0008		\$447,324	BWG - Metering Switchgear Design Changes from LADWP and Submittal Review Comments, CMAR Fee, City Tax
DA-4337/CGMP08	0009	\$4,299		Sasco - Electrical- BWG, CMAR Fee, City Tax
DA-4337/CGMP10	0005	\$24,255		CMAR Fee, City Tax, PCI - Interior Framing & Drywall
DA-4337/CGMP10	0006	\$1,573		PCI - Interior Framing & Drywall, CMAR Fee, City Tax
DA-4337/CGMP10	0007	\$84,103		Interior Documents Modification for Gates, CMAR Fee, City Tax
DA-4337/CGMP10	0008	\$4,258		2 HR Rated Wall Infill at Mechanical Heat Exchanger Room, CMAR Fee, City Tax
DA-4337/CGMP10	0009	\$118,221		Binnacle Rated Enclosures - Enclosures, CMAR Fee, City Tax
DA-4337/CGMP11	0001	(\$587)		Cyberlock Cores at Communications Rooms, CMAR Fee, City Tax
DA-4337/CGMP12	0001	\$450		CMAR Fee, Environmental Interiors - Interior Glass, City Tax
DA-4337/CGMP12	0002	\$267		Level 5 Artwork Design Assistance, CMAR Fee, City Tax

DA-4382 - BRADLEY WEST CORE (DA-4382)

DA-4382/CGMP03	0022	\$4,509		TPAR - Utilities, CMAR Fee, City Tax
DA-4382/CGMP03	0023	(\$44,263)		TPAR: Ten Inch DIP Waterline Modifications, TPAR: Cut DWP Bollards Flush with Slab, TPAR: Provide Blank Key Cores for LADWP Doors, TPAR: Restripe Parking Spaces Located North of ATCT Building, CMAR Fee, City Tax

Bradley West Element

DA-4382 - BRADLEY WEST CORE (DA-4382)

DA-4382/CGMP03	0024	\$10,005			TPAR: Relocate Drainage Pipe at West Side of IS-2299, TPAR: Manhole Lid Waterproof Seal, TPAR: Relocate Construction Fence in Parking Structure 2B, TPAR: Work Area 3 Phasing Requirements (Create Work Area 3A), CMAR Fee, City Tax
DA-4382/CGMP04	0029	\$19,255			Fire Protection Sprinkler Heads and Non-Compliant Electrical Conditions Corrections, Replace Existing Door, Infill Drywall at Fire Hose Valve location at Stair 10 between Levels 2 and 3, CMAR Fee, City Tax
DA-4382/CGMP04	0030		\$170,691		, CMAR Fee, City Tax
DA-4382/CGMP04	0032		\$535,451		Otis- Conveyances BP-06, CMAR Fee, City Tax
DA-4382/CGMP05	0007	\$35,576			Panels, Insulation, and Air Barriers (Crown Corr), CMAR Fee, City Tax
DA-4382/CGMP05	0008		\$326,233		, CMAR Fee, City Tax
DA-4382/CGMP08	0008	\$130,069			, CMAR Fee, City Tax
DA-4382/CGMP08	0009	\$50,981			, CMAR Fee, City Tax
DA-4382/CGMP08	0010		\$248,265		, CMAR Fee, City Tax
DA-4382/CGMP08	0011	\$3,436			Plumbing Installation (Desert), Fire Protection Design and Labor (Cosco), CMAR Fee, City Tax
DA-4382/CGMP09	0004	\$141,195			Fascia Soffit Drops (OC Plastering), WAJV- Fee, WAJV- City Tax
DA-4382/CGMP09	0005		\$479,309		Miscellaneous Metals, WAJV- Fee, WAJV- City Tax
DA-4382/CGMP13	0001	\$58,189			Interior and Exterior Ceiling Panels (ISEC), CMAR Fee, City Tax

CHANGE ORDERS - Continued as of 4/30/2011

Element	Project	Contract	Change Order No	< \$150K	\$150K - \$1Mil	> \$1Mil	Notes
CUP Replacement Element							
Utilities & Infrastructure Element							
Landside Element							
Residential/Soundproofing Element							
Terminal Element							
TBIT Renovation Element							

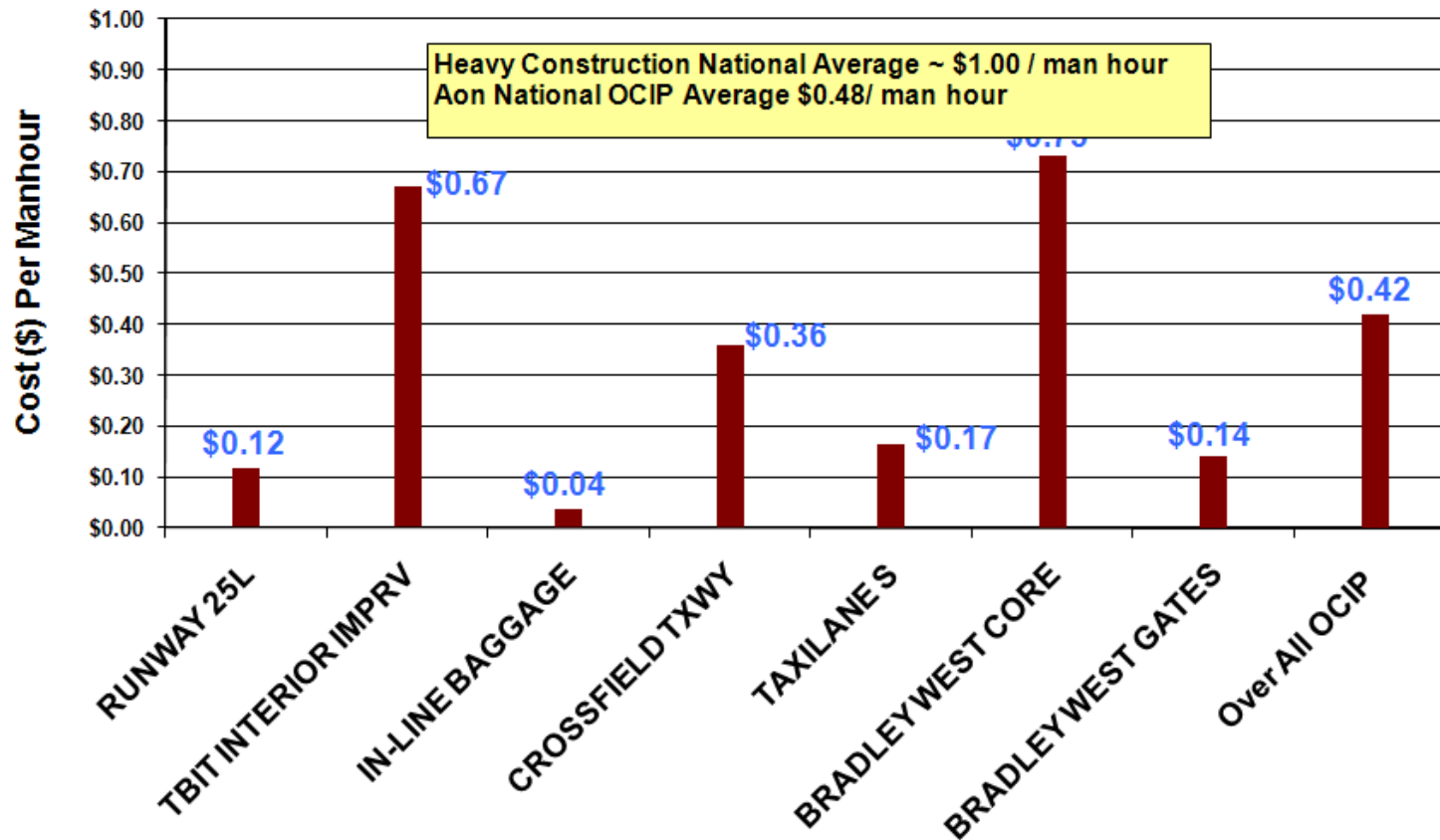
Bradley West- Gates

CHANGE TYPE	EXECUTED CHANGES (CUMMULATIVE)	APPROVED CHANGES (CUMMULATIVE)	SUBTOTAL	% OF CONTRACT VALUE
DESIGN EVOLUTION	\$22,361,661.00	\$6,685,600.00	\$29,047,261.00	5.32%
DOCUMENT CORRECTION	\$4,007,076.00	\$1,134,090.00	\$5,141,166.00	0.94%
FIELD CONDITIONS	\$1,183,968.00	\$662,273.00	\$1,846,241.00	0.34%
OWNER BETTERMENT	\$381,589.00	\$360,573.00	\$742,162.00	0.14%
CODE REQUIREMENT	\$266,935.00	\$99,352.00	\$366,287.00	0.07%
TOTAL	\$28,201,229.00	\$8,941,888.00	\$37,143,117.00	6.81%

Bradley West- CORE

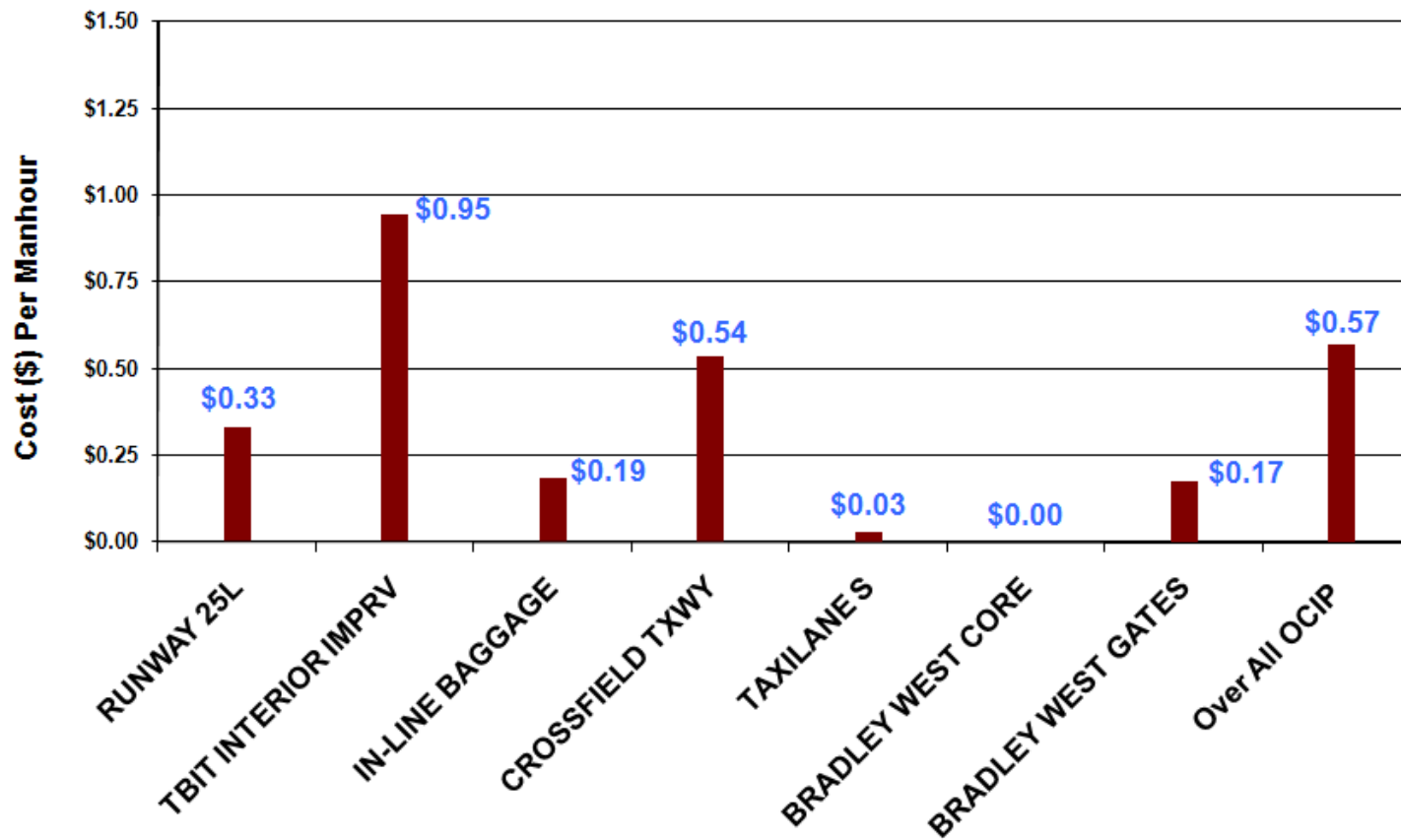
CHANGE TYPE	EXECUTED CHANGES (CUMMULATIVE)	APPROVED CHANGES (CUMMULATIVE)	SUBTOTAL	% OF CONTRACT VALUE
DESIGN EVOLUTION	\$24,241,726.00	\$776,703.00	\$25,018,429.00	4.28%
DOCUMENT CORRECTION	\$74,930.00	\$1,341,686.00	\$1,416,616.00	0.24%
FIELD CONDITIONS	\$3,398,841.00	\$44,898.00	\$3,443,739.00	0.59%
OWNER BETTERMENT	\$1,906,563.00	\$270,353.00	\$2,176,916.00	0.37%
CODE REQUIREMENT	\$2,959,723.00	\$20,023.00	\$2,979,746.00	0.51%
TOTAL	\$32,581,783.00	\$2,453,663.00	\$35,035,446.00	6.00%

LAWA OCIP Workers Compensation Loss Performance
 - as of March 31, 2011 -

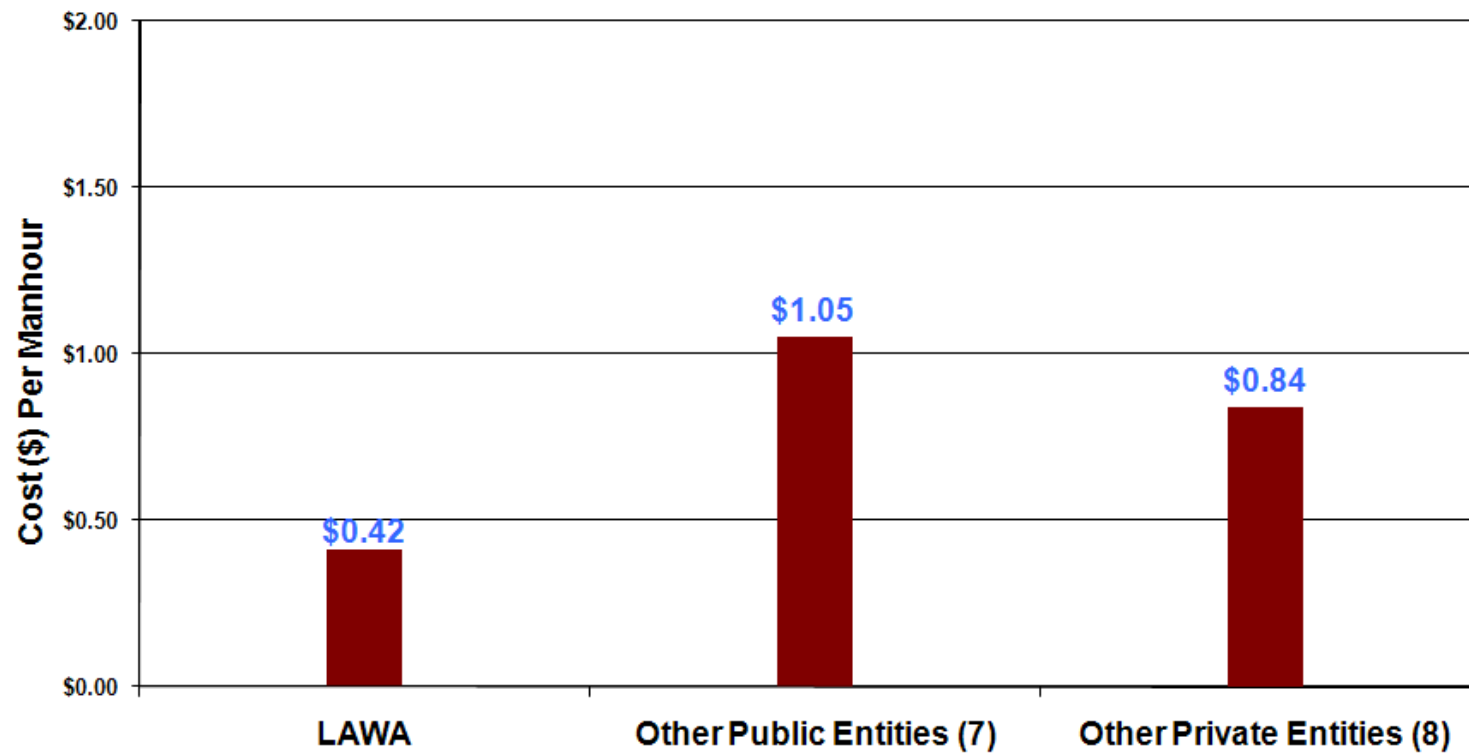


OCIP - Continued
 as of 3/31/2011

LAWA OCIP General Liability Loss Performance
 - as of March 31, 2011 -



**Current Large OCIP Projects
Comparison of Workers Comp Costs Per Manhour**



MWBE/DBE Subcontractor Utilization Summary Report as of 3/31/2011

Firm	Contract No.	DBE or M/WBE Contract	Proposed Level of Participation	Achieved Participation to Date*		Remarks
				M/WBE	DBE	
AECOM Technical Services, Inc.	DA-4260	DBE	12.00 %	N/A %	19.72 %	
CH2M Hill	DA-4414	M/WBE	22.00 %	33.58 %	N/A %	
Clark / McCarthy Joint Venture	DA-4554	M/WBE	20.10 %	4.40 %	N/A %	
Fentress Architects	DA-4274	DBE	9.30 %	16.73 %	6.96 %	
Flatiron West, Inc.	DA-4398	DBE	1.00 %	0.67 %	13.92 %	Achieved Participation from 2/28/11
Griffith Company	DA-4338	M/WBE	6.60 %	2.42 %	N/A %	Achieved Participation from 2/28/11
Griffith Company	DA-4478	M/WBE	23.70 %	25.00 %	N/A %	Achieved Participation from 2/28/11
Griffith Company	DA-4498	DBE	0.35 %	0.58 %	0.00 %	Achieved Participation from 2/28/11
Hatch Mott MacDonald, LLC	DA-4275	DBE	11.63 %	N/A %	20.47 %	
Hellmuth, Obata + Kassabaum, Inc.	DA-4313	M/WBE	25.00 %	38.56 %	N/A %	
Jacobs Project Management Co.	DA-4417	M/WBE	25.00 %	0.00 %	N/A %	
KDG Dev + Construction Consulting	DA-4418	M/WBE	20.00 %	0.00 %	N/A %	
Paragon Project Resources, Inc.	DA-4332	M/WBE	16.00 %	5.57 %	N/A %	
Parsons Transportation Group, Inc.	DA-4415	M/WBE	23.00 %	53.61 %	N/A %	
Paslay Management Group	DA-4324	M/WBE	10.00 %	16.90 %	N/A %	
Post, Buckley, Schuh & Jernigan, Inc.	DA-4515	DBE	24.00 %	N/A %	33.05 %	
Praxis Integrated Communications	DA-4541	M/WBE	10.00 %	0.00 %	N/A %	Achieved Participation from 2/4/11
Technion Contractors	DA-4462	M/WBE	0.16 %	1.47 %	N/A %	
Tobo Construction	DA-4354	DBE	0.00 %	14.59 %	2.33 %	
Vanir Construction Management, Inc.	DA-4416	M/WBE	20.00 %	18.41 %	N/A %	
W.E. O'Neil	DA-4371	M/WBE	6.80 %	10.20 %	N/A %	
Walsh Austin Joint Venture - Pre-Construction (Gates)	DA-4337	M/WBE	20.00 %	24.86 %	N/A %	
Walsh Austin Joint Venture - Construction (Gates)	DA-4337	M/WBE	14.00 %	10.77 %	N/A %	
Walsh Austin Joint Venture - Pre-Construction (Core)	DA-4382	M/WBE	20.00 %	25.98 %	N/A %	
Walsh Austin Joint Venture - Construction (Core)	DA-4382	M/WBE	14.00 %	8.25 %	N/A %	
Total Participation:	N/A	N/A	N/A	10.17%	6.04%	
Total Combined Participation:	N/A	N/A	N/A	16.21%		

*Achieved Participation to Date includes progress in the pledged program and progress outside of the pledge.

