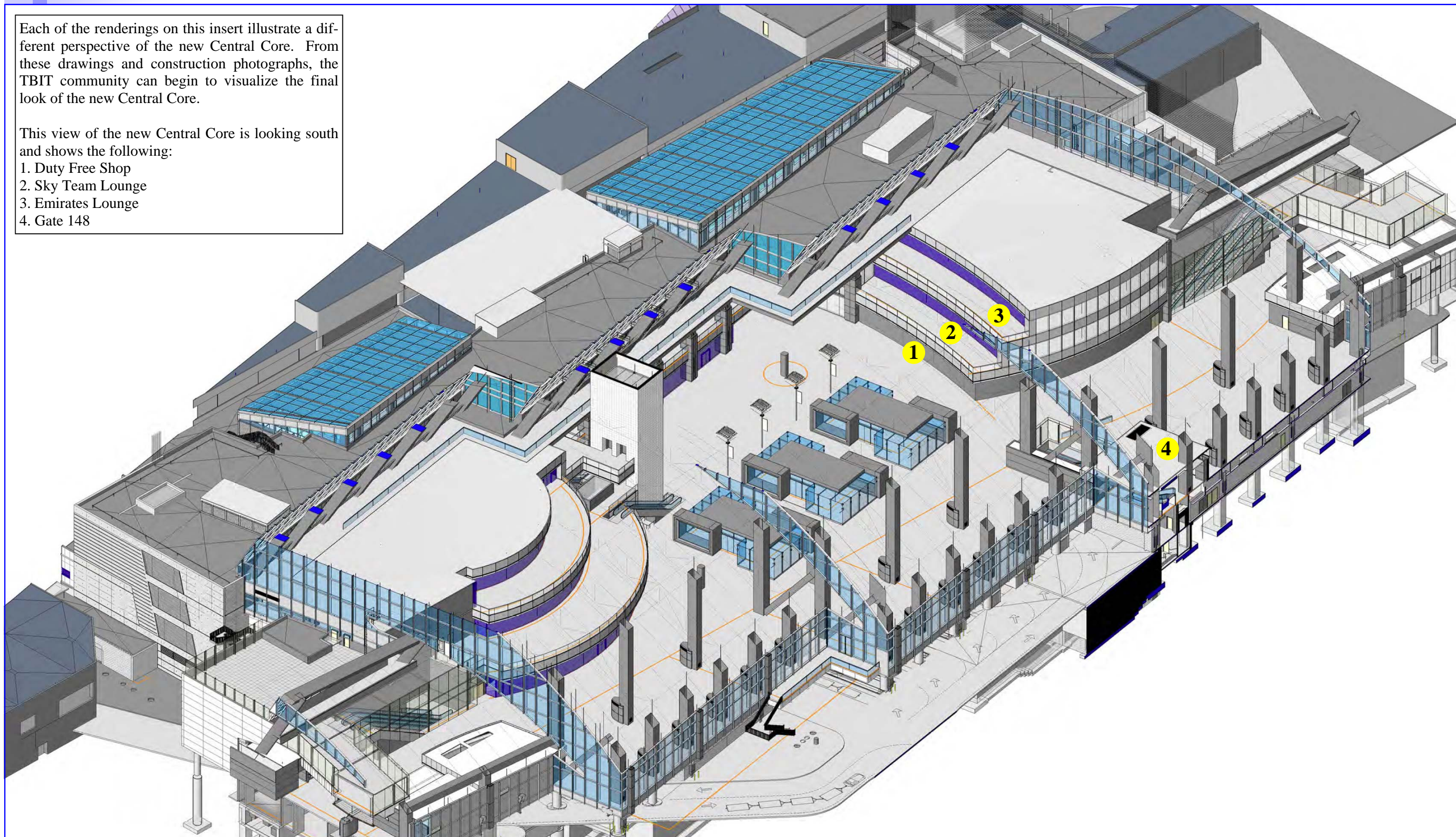
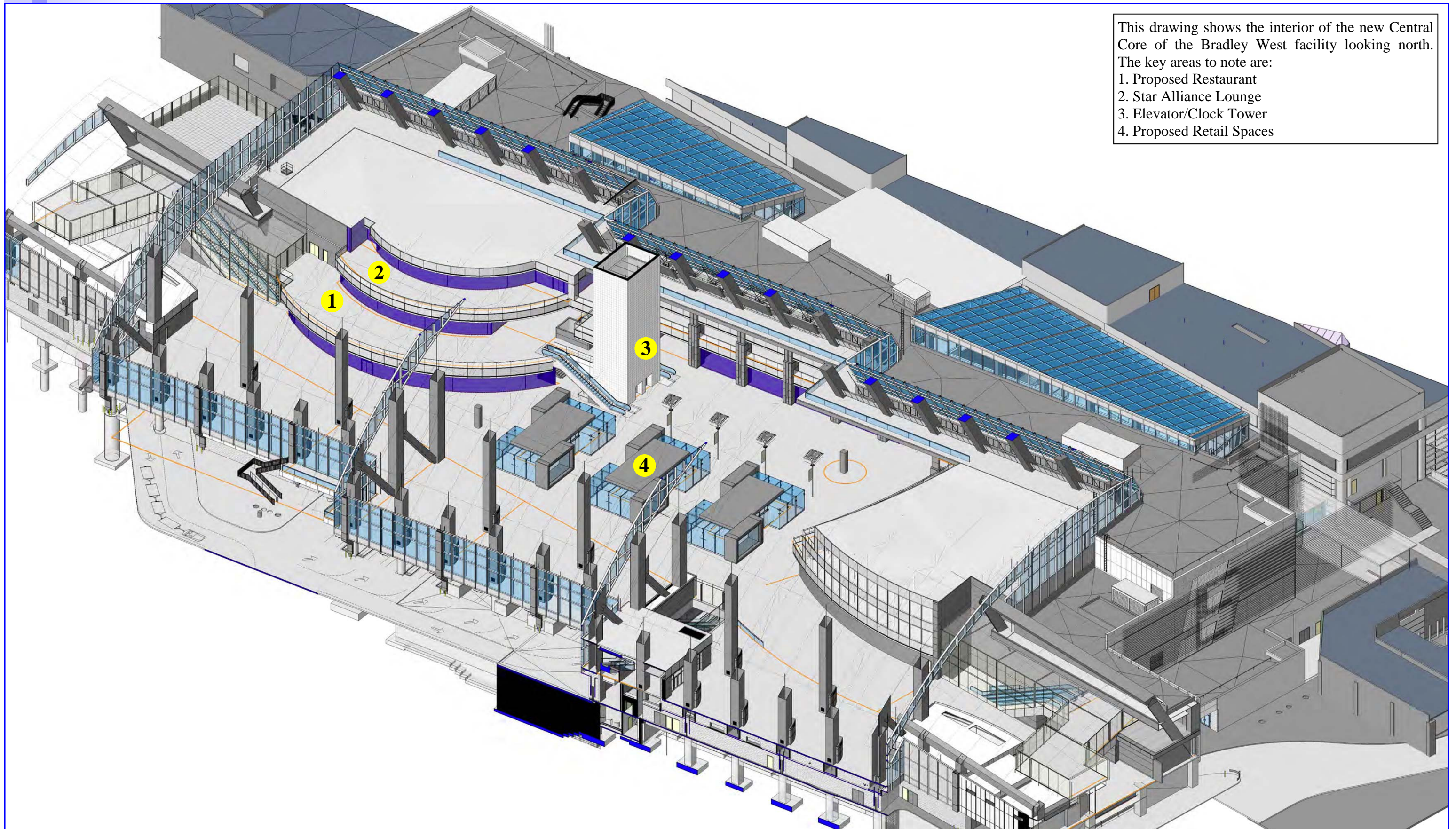


Each of the renderings on this insert illustrate a different perspective of the new Central Core. From these drawings and construction photographs, the TBIT community can begin to visualize the final look of the new Central Core.

This view of the new Central Core is looking south and shows the following:

- 1. Duty Free Shop
- 2. Sky Team Lounge
- 3. Emirates Lounge
- 4. Gate 148





This drawing shows the interior of the new Central Core of the Bradley West facility looking north. The key areas to note are:

1. Proposed Restaurant
2. Star Alliance Lounge
3. Elevator/Clock Tower
4. Proposed Retail Spaces