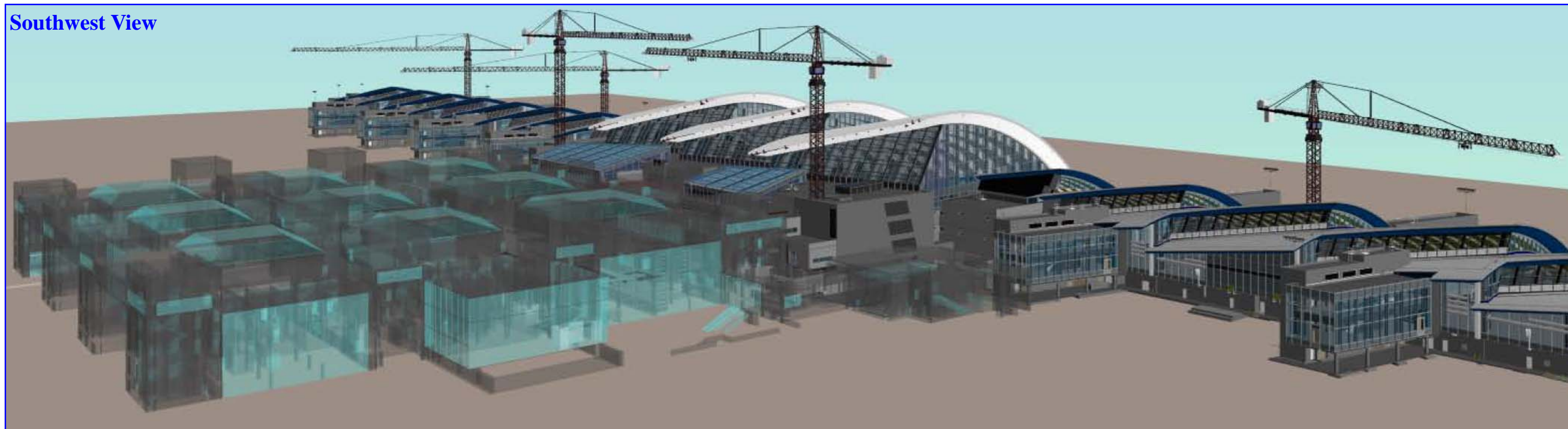
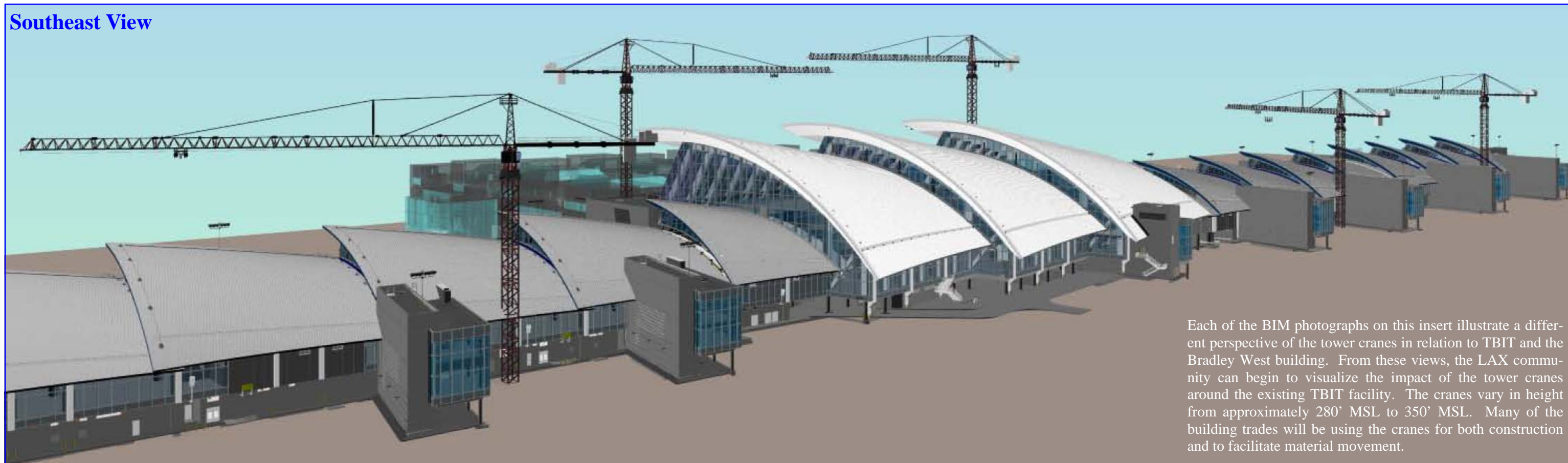


Southwest View

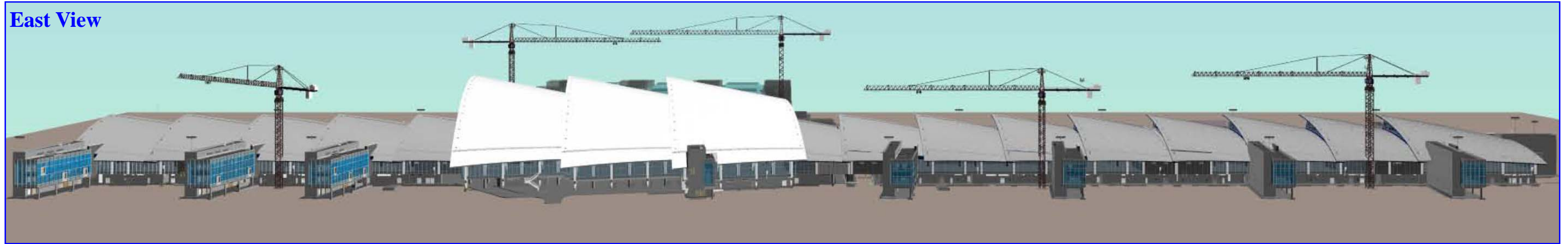


Southeast View

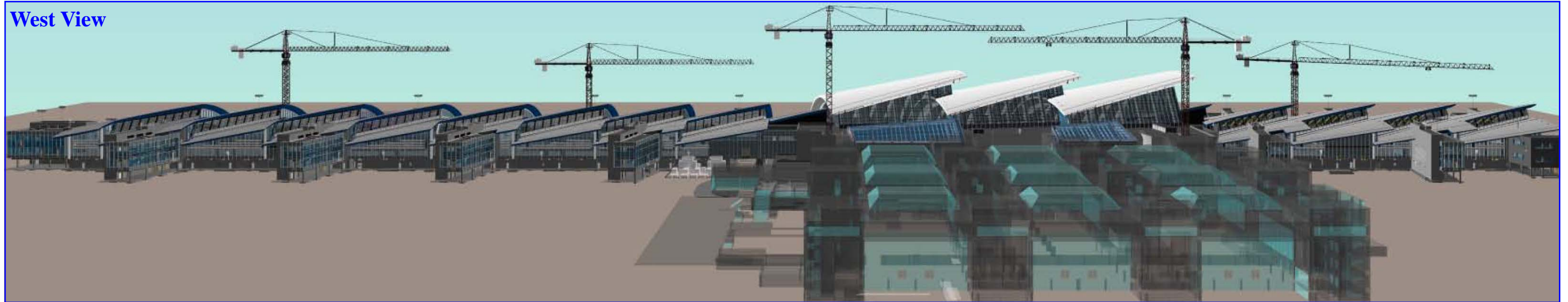


Each of the BIM photographs on this insert illustrate a different perspective of the tower cranes in relation to TBIT and the Bradley West building. From these views, the LAX community can begin to visualize the impact of the tower cranes around the existing TBIT facility. The cranes vary in height from approximately 280' MSL to 350' MSL. Many of the building trades will be using the cranes for both construction and to facilitate material movement.

East View



West View



Northwest View

