



# TBIT Construction News

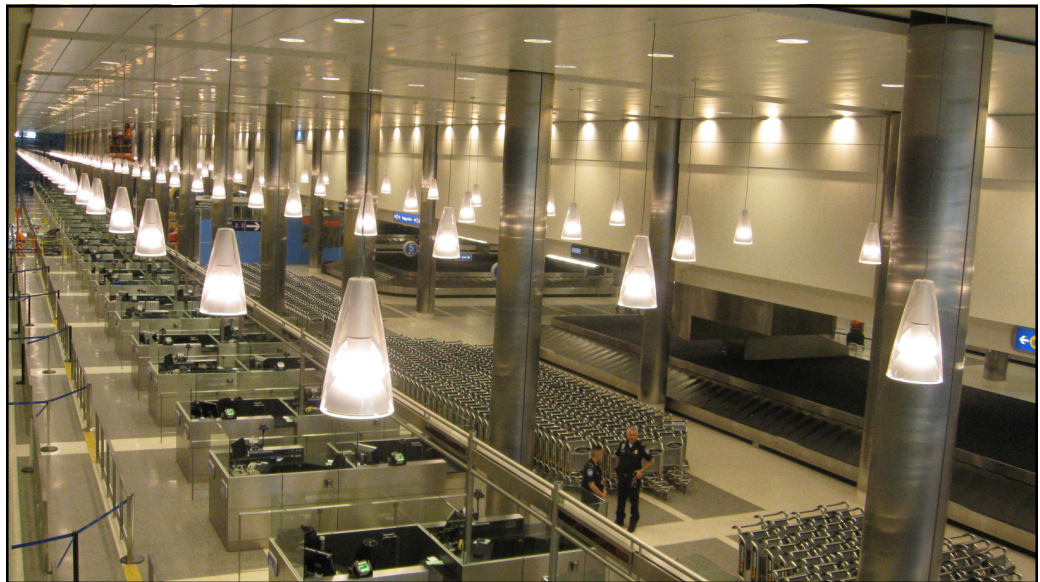
Volume 3, Issue 2

February 2009

## Inside this issue:

Departure Lobby Phase D-5	2
Interstitial Level - Baggage Handling System	2
South Matrix Building	3
North Matrix Building	3
Project Milestones December 2008 Update	4
TASS Summary Schedule	5
Bradley West Milestone Summary Schedule	6
Bradley West Construction Schedule	6
TBIT West Update	7
Message From the Executive Director	8

## FIS Facility Renovation Complete



Phases A-1 through A-4 of the FIS facility renovation portion of the TBIT Interior Improvement and Baggage Screening Facilities completed on schedule. The last of the FIS "blue barricades" were removed on February 3, 2009, allowing passengers unencumbered access through the facility for the first time since March 12, 2007.

The renovated FIS facility provides 68 new Primary Inspection Booths, 6 new large baggage claim devices, 18 Secondary Inspection Booths, plus renovated CBP offices. The FIS area also has renovated restroom facilities, new lighting, terrazzo flooring, finishes and new graphics to make the passenger experience a vast improvement over the former facility.

The contractor has now started work on Phases 5.1 and 5.2, the final two phases of the FIS renovation, Phase 5 will reconstruct

the two exit ramps leading from the FIS facility, one to the Arrivals area for meeters & greeters, and the other to the Interline Recheck area for passengers connecting to another flight. The renovated ramps are scheduled for completion by the end of 2009. The renovation of the Arrivals area and the Interline Recheck area will complete the TBIT project work on this level of the terminal.



## Departures Lobby Phase D-5

With the start of the new year, CMJV has erected the barricades around the Phase D-5 (aisle A) construction area as shown in the top right photo. The first phase of the D-5 terrazzo flooring has been installed and is in the process of being polished and sealed. The flooring has been accepted by the PMT and the barricades have been moved south approximately 15 feet to allow for additional passenger circulation space in Aisle A. After final polishing, the additional flooring area will be opened on February 6, 2009

The bottom right photo shows the start of installation of the steel support system for the D-5 canopy at the west end of Aisle A in front of the Air Tahiti Nui ATO. The sheetrock on the wall behind the ticket counter area has been removed to allow for the installation of new electrical and data services for the LCD screens which have proven to be very popular with the airlines.



## Interstitial Level - BHS

The photo on the top left shows the start of the load testing of the Baggage Handling System (BHS) with test bags. Tests by the contractor started on February 2, 2009 to determine the systems ability to read baggage tags, BSM messages, and deliver the bag to the correct pier assignment. The initial testing ran 600 bags thru the system with an read rate of 95%.

**In order for the BHS to be tested and commissioned, it is very important that the airlines provide SITA with the BSM messages from London to TBIT. To date, 20 of the 26 airlines currently operating in TBIT have provided BSMs to TBIT. The remaining six airlines are requested to provide BSMs as soon as possible.**

The photo on bottom left shows the installation of the new Baggage Reconciliation System workstations at the end of each set of new sort piers. SITA CUTE equipment will be installed in these units as part of the TASS program. The contract provides for the connectivity to 4 separate BRS systems through the workstation CUTE system.



## South Matrix Building

The photo on the left shows the demolition of the South Patio area. The existing palm trees and planters have been removed and a new landscaping plan will be installed as part of the LEEDS certification process.

The photo on the bottom left shows the progress on installation of the baggage conveyors for the Interline Baggage Recheck In-Line EDS screening complex.

Completion of the conveyor installation is scheduled for June 2009. This will be followed by the completion of the electrical and data work prior to the commissioning of the system. Commissioning of the system and completion of the Interline Recheck area renovation is scheduled for an operational date of September 30, 2009.



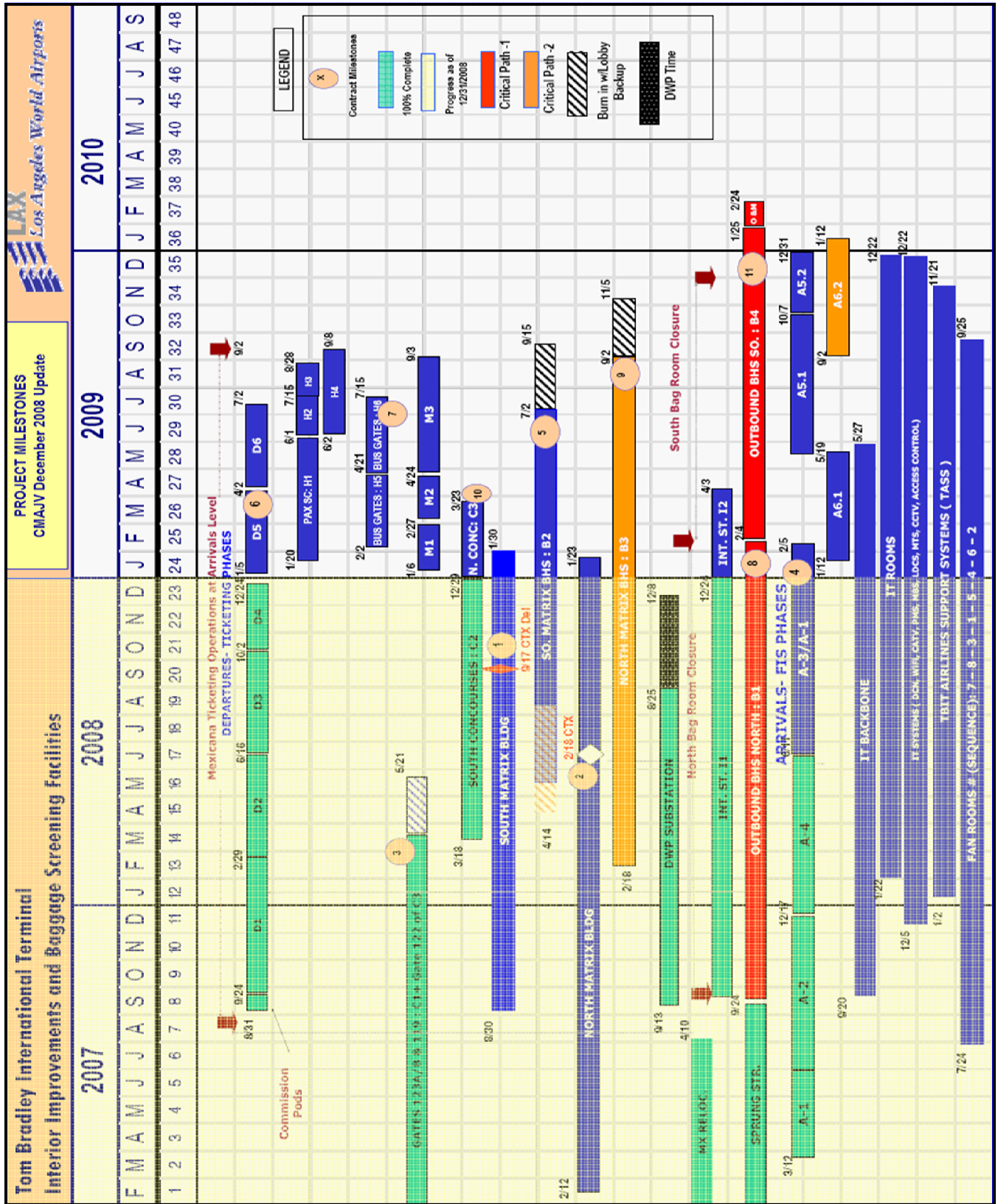
## North Matrix Building

The photo on the top right shows the completion of the North Patio area by the contractor. Installation of new landscape plants and ground cover will begin when the South Patio area, shown in the photo above, is completed.

The photo on the bottom right shows the installation of the trolley system in the North Matrix Building (NMB). The Trolley system will be used for the movement, removal and installation of the in-line EDS machines as required. It will also allow for the easy movement of heavy parts required for maintenance or replacement of the EDS machines. The Trolley installation requires the addition of a lot of additional steel bracing as shown in the photo to provide stability to the machines as they are suspended from the system.

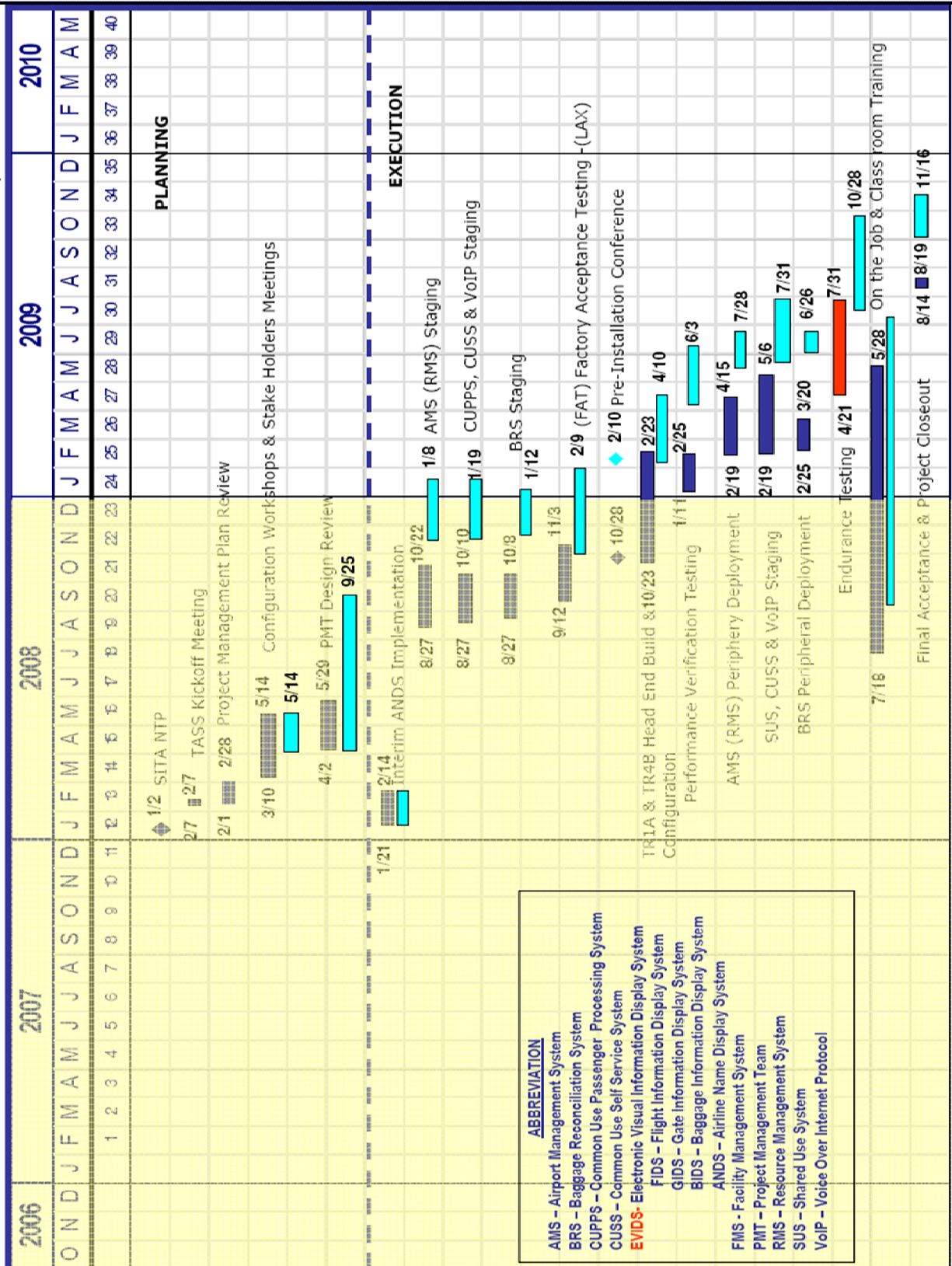
**Levels 1, 4, and 5 received a Temporary Certificate of Occupancy (TCO) which will allow the start of Tenant construction in the NMB. In addition, the ACAMS system is now "LIVE" for all levels of the NMB.**





**TASS SCHEDULE SUMMARY  
DECEMBER' 2008 UPDATE**

Feb'08 Plan  
Dec'08 Update



**ABBREVIATION**  
 AMS - Airport Management System  
 BRS - Baggage Reconciliation System  
 CUPPS - Common Use Passenger Processing System  
 CUSS - Common Use Self Service System  
 EVIDS - Electronic Visual Information Display System  
 FIDS - Flight Information Display System  
 GIDS - Gate Information Display System  
 BIDS - Baggage Information Display System  
 ANDS - Airline Name Display System  
 FMS - Facility Management System  
 PMT - Project Management Team  
 RMS - Resource Management System  
 SUS - Shared Use System  
 VoIP - Voice Over Internet Protocol

LAX DEVELOPMENT	Milestone Summary Schedule									
	2009									
Bradley West Terminal Expansion	January	February	March	April	May	June	July	August	September	
<b>Terminal Programming / Planning Milestones</b>										
Submit Questionnaires to TBIT Carriers / Ground Handlers <small>LAXDEV</small>	◆ January 10, 2009									
LAXTEC Meeting with Carriers / Ground Handlers <small>LAXTEC</small>	◆ January 13, 2009									
Questionnaires Due from TBIT Ground Handlers <small>GROUND HANDLERS</small>	◆ February 3, 2009									
Questionnaires Due from TBIT Carriers <small>CARRIERS</small>	◆ February 27, 2009									
100% DD Submittal - North & South Concourses <small>LAXDEV</small>	◆ March 2, 2009									
100% SD Submittal - Central Core <small>LAXDEV</small>	◆ March 6, 2009									
100% DD Review - North & South Concourses <small>LAXDEV</small>	◆ March 16, 2009									
1st Design Review Workshop for LAXTEC <small>LAXTEC</small>	◆ March 17, 2009									
100% SD Review - Central Core <small>LAXDEV</small>	◆ March 20, 2009									
Follow-up Interviews with TBIT Carriers / Ground Handlers <small>LAXDEV</small>	■ April 2009									
Programming / Planning Report Due LAXDEV / LAXTEC <small>LAXDEV</small>	◆ May 4, 2009									
2nd Design Review Workshop for LAXTEC <small>LAXTEC</small>	◆ May 19, 2009									
100% DD Submittal - Central Core <small>LAXDEV</small>	◆ July 17, 2009									
3rd Design Review Workshop for LAXTEC <small>LAXTEC</small>	◆ July 21, 2009									
100% DD Review - Central Core <small>LAXDEV</small>	◆ July 31, 2009									

LAX DEVELOPMENT	Bradley West Project Construction Schedule Summary																							
	2008		2009				2010				2011				2012				2013				2014	
	Q3	Q4	Q1	Q2	Q3	Q4	Q1	Q2	Q3	Q4	Q1	Q2	Q3	Q4	Q1	Q2	Q3	Q4	Q1	Q2	Q3	Q4	Q1	Q2
<b>Crossfield Taxiway Project</b>																								
<b>Construction</b>																								
Crossfield Taxiway C-13 Project Prime Contract <b>1</b>	Apr 2009 <span style="border: 1px solid black; padding: 2px;">Taxiway C-13</span> July 2010 IMPACT: QF Aircraft Parking / Maintenance																							
Temporary Remote Gate Bus Facility <b>2</b>	Jan 2010 <span style="border: 1px solid black; padding: 2px;">Bus Facility</span> Sept 2010 IMPACT: VSR Relocated, Walking Distances																							
<b>TBIT - Reconfiguration Project</b>																								
<b>Construction</b>																								
North Concourse West Gates / Apron <b>3</b>	Jan 2010 <span style="border: 1px solid black; padding: 2px;">North Concourse West Gates</span> Jan 2012 IMPACT: Minimal to Carriers																							
South Concourse West Gates / Apron <b>4</b>	Mar 2010 <span style="border: 1px solid black; padding: 2px;">South Concourse West Gates</span> Sept 2012 IMPACT: Minimal to Carriers																							
Central Core West Gates / Apron <b>5</b>	Apr 2010 <span style="border: 1px solid black; padding: 2px;">Central Core West Gates</span> Mar 2013 IMPACT: Terminal Ops: SSCP, Int. Bag Claim, Landside Concessions																							
Demo Existing North Concourse / Const East Gates / Apron <b>6</b>	May 2012 <span style="border: 1px solid black; padding: 2px;">N. Conc. E. Gates</span> Feb 2013 IMPACT: Baggage Handling Tug Routes																							
Demo Existing South Concourse / Const East Gates / Apron <b>7</b>	Feb 2013 <span style="border: 1px solid black; padding: 2px;">S. Conc. East Gates</span> Jan 2014 IMPACT: Baggage Handling Tug Routes																							
Taxiway "S" Relocation <b>8</b>	Nov 2009 <span style="border: 1px solid black; padding: 2px;">Taxiway S Relocation</span> Mar 2011 IMPACT: Minimal to Carriers																							
LAX Fuel Lines Relocation <b>9</b>	Nov 2009 <span style="border: 1px solid black; padding: 2px;">Fuel Line Reloc</span> Sept 2010 IMPACT: Minimal to Carriers																							
West Side Elements <b>10</b>	Apr 2013 <span style="border: 1px solid black; padding: 2px;">West Side Proj</span> Jun 2016 IMPACT: Minimal to Carriers																							

from which you can choose



## LAXTEC

LAXTEC Corporation  
380 World Way  
Box S-18  
Los Angeles, CA 90045

Phone: 310-646-9378  
Fax: 310-646-2981  
SITA: VNYLXCR

LAXTEC Corporation was formed in 1982 as a nonprofit corporation by twenty major international airlines who would occupy the new Tom Bradley International Terminal at LAX. LAXTEC's original mission was to design, finance, install, operate and maintain all passenger and aircraft support equipment at the TBIT.

On October 1, 1996, LAXTEC significantly expanded the scope of its mission by assuming the responsibilities of the Foreign Airline Operators Committee.

Today, LAXTEC Corporation is owned by the shareholder airlines (42) to represent their interests with various local, state and federal government agencies. In addition, LAXTEC maintains certain infrastructure equipment at the Tom Bradley International Terminal Building (TBIT) for the airline tenants of this facility. LAXTEC may at the request of the airlines, and upon approval by the shareholders, procure and maintain assets as a cost-effective alternative for the tenants/users of TBIT. LAXTEC Corporation and its Board of Directors delegates to the Management Council (LMC) the responsibility for the day-to-day operational issues related the TBIT facility and the use of LAXTEC assets.

By 2006, LAXTEC had provided equipment support for nearly 650,000 flights and 111 million passengers over the past two decades. The LAXTEC Management Council (LMC) will continue to play an active and coordinated role in managing the anticipated growth of international travel at LAX, in concert with all the stakeholders in the aviation community.

### Message From the Executive Director

As we move into 2009 we enter the home-stretch of the TBIT Refurbishment Project with 65% of construction activity having been completed. In the near future we will see major sections of the building finished including the FIS area, gate hold-rooms, and the arrivals level. Almost three years have passed since start of a highly complex construction project with some almost impossible phasing challenges that had to be addressed. To everyone's credit we have survived several peak travel seasons, and done so with no major incidents, and no disruption to the construction schedule. While we have achieved numerous major project milestones, we still face some significant challenges over the next twelve months that will last until project completion in January 2010. Most important for the airline community will be those elements of the project that will have the greatest impact on your staff in terms of training requirements, but are also expected to deliver the most significant productivity and service improvements to be generated by the investment of over \$723M in this program. Specifically TASS, which incorporates the

airline's IT related programs, and the new "in-line" bag system, will begin to come "on-line" in the next few months. We seek your continued support through participation in planning and implementation meetings as we move through this final phase. The involvement and training of airline/service company personnel will be a critical element of the plan that will lead to a smooth introduction of both systems.



**Frank Clark**  
Executive Director—LAXTEC

Published for LAXTEC by

**AvAirPros**