

RE:LAX

The LAX Capital Improvement Program Newsletter

WINTER 2010

New In-line Luggage Screening System Improves Passenger Convenience At Terminal 3

JAY BERKOWITZ



Security screening of checked luggage in Terminal 3 now takes place behind the scenes, providing travelers with room to enjoy new, more spacious lobbies.

In mid-November the In-Line Baggage System project at Terminal 3 was completed. Once-inconvenient lines for checked luggage screening have now been eliminated. Travelers now experience less congestion and improved passenger flow without having to haul their luggage from airline ticketing counters to the luggage screening machines.

The screening machines have been moved to a dedicated facility adjacent to the terminal where Transportation Security Administration (TSA) personnel screen luggage. The new security facility

also includes baggage inspection rooms that house electronic trace detection machines and areas for manual screening of outbound baggage. The system processes up to 3,500 to 4,000 bags a day and has the capability of processing 2,000 an hour with all equipment operating simultaneously.

Because all of these processes now take place behind the scenes, the lobby has reverted back to what it was prior to the 9/11 security concerns. The rearrangement of the luggage check-in process provides better service to travelers without compromising security. ✈

IN THIS ISSUE

PAGE 2

Colorful Interior Redesign at T3

Terminal 6 Gets a Facelift

PAGE 3

New Fire Station Breaks Ground

Crossfield Taxiway Takes Shape

PAGE 4

TBIT Bus Gates Ready for Launch

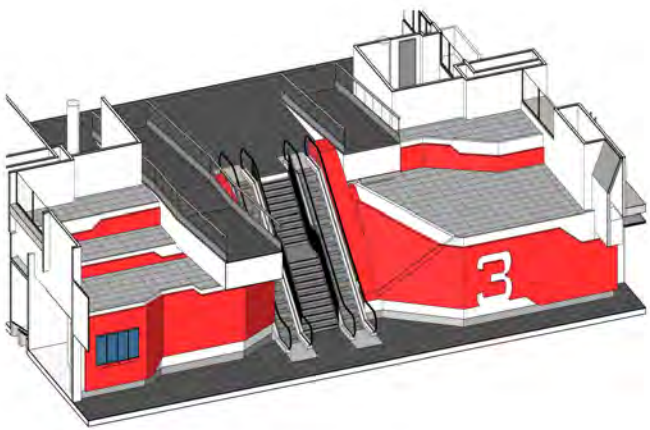
Elevator Replacement Begins

New Dog Relief Stations

RE: LAX
RE: IMAGINE
RE: NEW
RE: JUVENATE
RE: VITALIZE
RE: FRESH
RE: DESIGN
RE: VIVE
RE: INVIGORATE
RE: ARRANGE
RE: DEDICATE

LAX
Los Angeles World Airports

Renovations at Terminal 3 and 6 Add Color and Modern Amenities To Bring Comfort and Convenience to Travellers



An example of the paint scheme treatment for the walls at Terminal 3, which will add color and airline branding throughout the interior.

Interior Redesign at Terminal 3 Adds Splash of Color

In addition to a streamlined check-in process, Terminal 3 will soon be sporting a new look. Tenant airlines along with LAVA are working on an interior renovation that will spruce up the terminal's interior walls, carpeting, ceiling and support columns. Travelers are sure to enjoy the modern new look. Faded, yellow-tiled walls will be replaced by vibrant reds and fuchsias along with airline branding throughout. New ambient lighting will create a relaxing atmosphere for passengers and reduce the feel of a busy airport. This renovation is scheduled to be completed by Spring 2010.

New Aircraft Rescue Firefighting Facility Begins Construction

On November 12, 2009, Los Angeles Mayor Antonio Villaraigosa, local and federal elected officials, and City fire and airport executives broke ground on a new replacement Aircraft Rescue and Firefighting (ARFF) facility at LAX. The \$13.5-million Los Angeles Fire Department Station 80 project received \$10.8 million in federal stimulus funding from the American Recovery and Reinvestment Act through a grant from the Federal Aviation Administration.

The new station will be double the size of the existing facility with 27,500 square feet and seven bays to house and maintain vehicles and emergency response equipment. The new facility will also accommodate LAX operations



JAY BERKOWITZ

associated with larger, new-generation aircraft and house 14 firefighters for each 24-hour shift.

The relocation of Station 80 is vital to the start of the Bradley West project, which will construct new-generation aircraft gates and a Great Hall on the west

LEFT: Airport Police Chief George Centeno, members of LAFD Command Staff, LAFD Chief Millage Peaks, L.A. Mayor Antonio Villaraigosa, Board of Airport Commissioners Vice-President Valeria C. Velasco, LAFD Commissioner Andrew Friedman, Airport Commissioners Joseph Aredas and Walter Zifkin break ground for the new ARFF on Nov. 12.

RIGHT: The new facility will house up to seven emergency vehicles and 14 firefighters per shift.

Terminal 6 Renovation

LAX Construction and Maintenance Services

Division has finished renovations at Terminal 6. Mustard, yellow, elementary-school-style restrooms will be replaced with facilities that sport shiny, silver metallic paneling and modern fixtures. A \$2.5-million renovation was completed on schedule in December. The renovation results from recommendations in a J.D. Powers and Associates study on customer satisfaction at LAX. The project originally started in 2007 and addressed aspects of the terminal that were in need of immediate refurbishing or modernization. These included:

- Renovating six public restrooms

The renovation at Terminal 6 includes new mosaic tiles to the columns throughout the terminal along with many other features.



JAY BERKOWITZ

- Replacing stained ceiling tiles throughout the terminal
- Installing carpet in meeter-greeter area
- Repairing terrazzo flooring in baggage claim
- Upgrading the Traveler's Aid passenger information station
- Adding mosaic tiles to lower portion of columns
- Updating the rotunda area with a new paint and color scheme
- Upgrading lighting with more energy-efficient and brighter fixtures

side of the Tom Bradley International Terminal. Completion of the new ARFF is scheduled Fall 2010.



Crossfield Taxiway Project Update

The Crossfield Taxiway Project (CTFP) is well under way. The CTFP encompasses improvements to a portion of the existing airfield taxiway system that supports aircraft access between the north and south runway complexes. The new area will be designated Taxiway R. In addition, a new parallel service road along Taxiway R will be built and an existing aircraft parking area will be relocated alongside the south end of Taxiway R.

Demolition is almost completed and installation of relocated underground utilities started. Work has also begun on the Service Road Bridge and Taxiway Bridge that will cross above a relocated portion of World Way

Construction is well under way on the Crossfield Taxiway project with pouring of new econcrete and Portland cement.

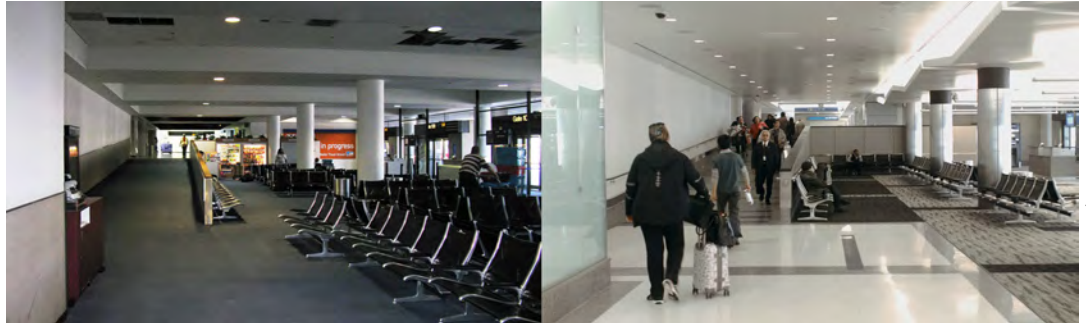


JAY BERKOWITZ

West. The \$13,546,500 project is funded by an Economic Recovery grant from the Federal Aviation Administration (FAA) and airport revenue bond proceeds. No monies from the Los Angeles City general fund will be used. The ARFF began May 2009 and is scheduled for completion June 2010.

Bus Gate Area Renovations Completed

Before and after photos show improvements and better lighting in the bus gate area.



JERRY NEEDHAM / JAY BERKOWITZ

Previously dark bus gates at the Tom Bradley International Terminal have been completely revamped! Gone are the low ceilings, dim lighting and drab atmosphere. Passengers waiting to be taken to flights at Gates 111 through 114 will now experience a brighter environment with modern fixtures, new carpeting and tile along with higher ceilings, silver metallic paneling

and new communications and information display equipment. The new décor will provide an enjoyable setting for passengers as they wait for the bus to take them to remote gates to catch their flight. The renovations have transformed the area into a well lit, modern, pleasant stop along the way to that business or vacation destination.

Elevator Replacement Program Gets Under Way Throughout LAX

The days of waiting for a slow elevator at LAX will soon be over now that a major overhaul and replacement of the elevator, moving walkway and escalator systems has gotten under way. Travelers will see barricades around various elevator banks throughout the Central Terminal area. This temporary inconvenience

will result in improved people flow with energy-saving sustainable technology. Renovation/replacements have already begun at TBIT, Terminal 6 and Terminal 3. The nearly \$175-million project will replace 285 systems and its phased schedule is expected to be completed in 2012.

PLEASE SEND COMMENTS, INQUIRIES AND SUGGESTIONS TO

arodriguez@lawa.org or Los Angeles International Airport Public Relations Division Attn: Albert Rodriguez One World Way Room 109 Los Angeles, CA 90045

Construction at LAX Has Gone to the Dogs!

The animal relief station located between Terminals 1 and 2 in the Lower Arrivals Level.

Animal relief stations have been added within the Central Terminal Area at Los Angeles International Airport (LAX) to better accommodate travelers with service animals.

Three new relief areas have been built to better assist travelers with disabilities who are accompanied by guide dogs or other assistance animals. The relief stations can be found between Terminals 1 and 2; Terminal 3 and TBIT; TBIT and Terminal 4; between Terminals 5 and 6 across the street next to the parking lot and at the



ED MELARA

end of Terminal 7. Boxes containing bags for easy disposal of waste are conveniently located behind animal relief station signs.